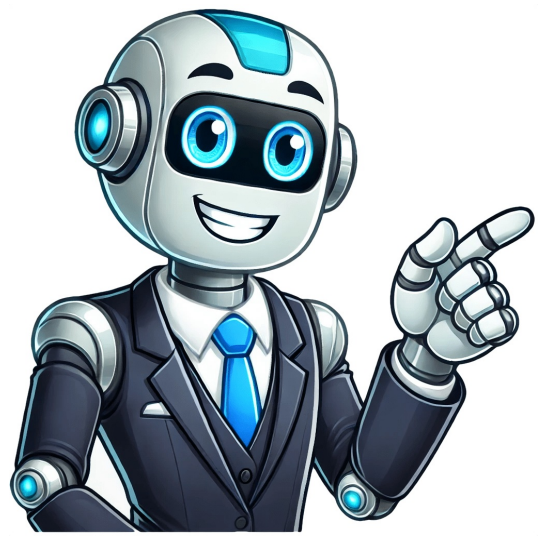


Click to verify































Instant download John Deere LA100 Series(LA100,LA110,LA120,LA130,LA140) Lawn Garden Tractor Service Repair Technical Manual. This manual content all service, repair, maintenance, troubleshooting procedures for John Deere LA100 Series(LA100,LA110,LA120,LA130,LA140) Lawn Garden Tractor.All major topics are covered step-by-step instruction, diagrams, illustration, wiring schematic, and specifications to repair and troubleshoot. With this factory service repair manual on hand can easily help you with any repairs that you may need for your John Deere LA100 Series(LA100,LA110,LA120,LA130,LA140) Lawn Garden Tractor.Machine model :John Deere LA100 Series(LA100,LA110,LA120,LA130,LA140) Lawn Garden TractorTM2371Manual Covers:\*Safety\*Specifications and Information\*Engine (B&S Single Cylinder)\*Engine (B&S V-Twin)\*Electrical\*Power Train (Gear)\*Power Train (Hydrostatic)\*Steering\*Brakes\*Attachments\*MiscellaneousAND MOREEnjoy sharper detail, more accurate color, lifelike lighting, believable backgrounds, and more with our new model update. Your generated images will be more polished thanever.See What's NewExplore how consumers want to see climate stories told today, and what that means for yourvisuals.Download Our Latest VisualGPS ReportData-backed trends. Generative AI demos. Answers to your usage rights questions. Our original video podcast covers it allnow ondemand.Watch NowEnjoy sharper detail, more accurate color, lifelike lighting, believable backgrounds, and more with our new model update. Your generated images will be more polished thanever.See What's NewExplore how consumers want to see climate stories told today, and what that means for yourvisuals.Download Our Latest VisualGPS ReportData-backed trends. Generative AI demos. Answers to your usage rights questions. Our original video podcast covers it allnow ondemand.Watch Now catalogue Tractors Construction Forestry Lawn and Garden Lawn Tractors Mowers Gators, ATVs Other Agriculture Engines PowerTech Liebherr Yanmar FPT Components Other Brands Timberjack Waratah Hagie BELL FMWORLD Liebherr Hitachi XCG Your search did not match any products. Make sure all words are spelled correctly. Please enter two or more characters. Tractors Construction Forestry Lawn and Garden View all Lawn Tractors Mowers Gators, ATVs Other Agriculture Engines View all PowerTech View all Accessories Liebherr Yanmar FPT Components Other Brands View all Timberjack Waratah Hagie BELL FMWORLD Liebherr Hitachi XCG Store User menu Sign in Create Account Cart Compare Please visit this URL to review a list of supported browsers. Note: Quote Data is Delayed At Least 15 MinutesMarket Data is delayed by 15 minutes and is for informational and/or educational purposes only. In certain circumstances, securities with respect to which the relevant exchange has commenced delisting proceedings may continue to be traded pending appeal of that determination. To view a list of securities that are subject to delisting, including those that continue to be traded pending appeal, please click here.CUSIP identifiers have been provided by CUSIP Global Services, managed on behalf of the American Bankers Association by Standard & Poors Financial Services, LLC, The CUSIP Database. 2025 American Bankers Association. "CUSIP" is a registered trademark of the American Bankers Association.Yield data is for informational purposes only. It doesnt matter if youve never driven a tractor, moved a lawn, or operated a dozer. With John Deeres role in helping produce food, fiber, fuel, and infrastructure, we work for every single person on the planet. It all started nearly 200 years ago with a steel plow. Today, John Deere drives innovation in agriculture, construction, forestry, turf, power systems, and more. Primary Get directions One John Deere Place Moline, IL 61265, US Get directions John-Deere-Str. 70 Mannheim, Germany 68163, DE Get directions 1 Rue John Deere Fleury les Aubrais Cedex , France 45401, FR Get directions Energiestraat 16 Horst, Netherlands 5961PT, NL Get directions Poznaska 1B Tarnowo Podgrne, Poland 62-080, PL Get directions 43 avenue John F. Kennedy L-1016, Luxembourg L-1016, LU Get directions Cyber city, Magarpatta city , Hadapsar Pune, India 411013, IN Get directions Boulevard Daz Ordaz #500 Garza Garca, Mexico 66210, MX Get directions 295 Hunter Rd. Grimsby, Ontario L3M 4H5, CA Get directions 1,634,918 followers 5h One design. Two locations. All Deere. Jason Baker, owner of Dream Traxx, LLC, a company that designs motocross tracks, used our equipment and technology to build a track at his facility in California. We then invited him to Coal Valley, Illinois, where he put the same design to the test all in a day's work. John Deere reposted this Factory Engineering Manager, Harvester Works at John Deere 6d When I walked into John Deere Harvester Works for the first time back in 2011, I was a little intimidated. I remember standing on the shop floor, watching a combine come together, and thinking:This is where machines meet meaning. Fast forward to today, Ive had a front-row seat to one of the most transformative chapters in our factories history. Weve invested over \$150 million into this place - not just in steel and sensors, but in people. In the way we work. In the pride we take in doing things right the first time. Sometimes I still need to pinch myself. Its such a cool experience to be part of something this big, this meaningful, and this rooted in purpose. Read more about our investments: 1,634,918 followers 1w This isn't your typical classroom. At our Davenport, Iowa Training Center, we're using AI and extended reality to train our dealers, operators, and employees. "We have a global network of training centers with more than 80 employees," explained Tammo Wagner. "The team has delivered 1.2 million hours worth of classes and has a combined 2.4 million hours of machine operating experience. 1,634,918 followers 4w The Ruzickas are farmers from Marble Rock, Iowa, where they plant corn and soybeans and raise hogs. Last year, their dad, Mike Ruzicka, had a serious accident. Suddenly, their 1,800-acre farm needed extra help. Thats when Farm Rescue stepped in - a nonprofit based in North Dakota that helps farmers when life throws a curveball like injuries, illness, or natural disasters. They bring in volunteers and equipment to keep farms running. And a lot of those volunteers are John Deere employees. Thats what brought the Ruzickas to our Tractor Operations in Waterloo, Iowa. They wanted to see where the tractors that power their farm are made and meet the people behind them. 1,634,918 followers 4w Edited Being named to this years Axios and The Harris Poll 100 is a meaningful reflection of how people view John Deere. The survey asks Americans which companies stand out for their reputation, and were grateful that our name came to mind, says Mara Downing, vice president, corporate communications & brand management. Our brand has always been shaped by the people who build it, the customers who rely on it, and the communities we serve. Everything we do is in service of our customers and helping life leap forward. List of rankings: 1,634,918 followers 1mo Welcome to our Bruchsal factory in Germany! Here we bring together smart robotics and skilled employees to build cabs for tractors and combines. Location details:- Campus: 627,300 m (similar size as 88 soccer fields!)- Shopfloor: 64,500 m- Employees: 770 With a focus on safety, sustainability, and continuous improvement, the factory not only meets the highest standards of quality and efficiency it sets them," explains Sven Knstler, factory manager Bruchsal. "We assemble cabs that help deliver the performance and comfort our customers count on. And at the core of this success is a team of highly trained, passionate professionals who bring deep expertise, dedication, and a strong sense of responsibility to their work." #JohnDeereEurope 1,634,918 followers 1mo Edited Our cotton picker just won Iowa Association of Business and Industry's 2025 "Coolest Thing Made in Iowa" contest. "This award belongs to everyone who has contributed to the success of the CP770 cotton picker, from concept to fabrication, assembly to delivery, and everything in between," shared Rosalind Fox, factory manager at John Deere Des Moines Works. "Our employees continue to push boundaries to better serve farmers around the world. Thank You for Purchasing a JohnDeere Product Using Your Operators Manual Special Messages Record Identification Numbers Register Your Product and Warranty Online Understanding The Machine Safety Labels Warning DANGER DANGER WARNING DANGER DANGER - CAUTION Emission Control System Certification Label Emission Compliance Period Certification Canadian Electromagnetic Compatibility (EMC) Compliance Operating Safely Using a Spark Arrestor Checking Mowing Area Parking Safely Rotating Blades are Dangerous Protect Children Avoid Tipping Keep Riders Off Towing Loads Safely Wear Appropriate Clothing Driving Safely on Public Roads Practice Safe Maintenance Avoid High Pressure Fluids Prevent Fires Handling Fuel Safely Tire Safety Checking Wheel Hardware Handling Waste Product and Chemicals Charge and Connect Battery Check Tire Pressure Adjust Mower Deck Level Check Engine Oil Level Check Machine Safety System Break In Electric Engagement Clutch (If Equipped) Operator Station Controls (LA100) Operator Station Controls (LA110, LA120) Operator Station Controls (LA130, LA140, LA150) Daily Operating Checklist Adjusting Seat Adjusting Cutting Height Checking Mower Deck Level Adjusting Mower Deck Wheels Testing Safety Systems Testing Park Brake Switch Testing Park Brake Testing Attachment Engagement Switch or Lever Testing Seat Switch Testing Reverse Implement Option (RIO) Using the Park Brake Using the Hour Meter and Service Reminder (LA120, LA130, LA140, LA150) Using Key Switch and Headlights Starting the Engine Idling the Engine Stopping the Engine Using Travel Controls on Gear Transmission Using Travel Controls on Automatic Transmission Using The Reverse Implement Option (RIO) Using Cruise Control (LA120, LA130, LA140, LA150) Engaging and Disengaging Mower Using Mulch Cover (107 cm (42 in.) and 122 cm (48 in.) Mower Decks Unplugging Mower, Bagger, or Material Collection System Moving Machine by Hand Transporting Machine on Trailer Using Weights Using Tire Chains Using Accessories Choosing Mower Blades Mowing Tips Servicing Your Machine Intervals Grease Lubricating Pivot Points Engine Warranty Maintenance Statement Avoid Fumes Engine Oil Checking Engine Oil Level Changing Engine Oil and Filter Cleaning Air Intake Screen and Engine Fins Checking and Cleaning Air Cleaner Elements (Single Cylinder Briggs & Stratton) Checking and Cleaning Air Cleaner Elements (Twin Cylinder Briggs & Stratton) Checking Spark Plug Adjusting Carburetor Replacing Fuel Filter Checking Transmission Removing or Installing Mower Drive Belt at Engine Drive Sheave (122 cm (48 in.) and 137 cm (54 in.) Mower Deck) Removing Mower Deck Replacing Mower Drive Belt (107 cm (42 in.) and 137 cm (54 in.) Mower Decks) Adjusting Mower Belt Tension (107 cm (42 in.) Mower Deck) Adjusting Spindle Brakes (107 cm (42 in.) Mower Deck) Cleaning Mower Deck and Grass Collector (122cm (48 in.) Mower Deck) Checking for Bent Mower Blades Servicing Mower Blades Sharpening Blades Balancing Blades Battery Statement Service the Battery Safely Removing and Installing the Battery Cleaning Battery and Terminals Using Booster Battery Replacing Headlight Bulb Replacing Fuse Using Proper Fuel Filling Fuel Tank Checking Tire Pressure Removing and Installing Hood Cleaning Plastic Surfaces Cleaning and Repairing Metal Surfaces Removing and Installing Front Wheel Assembly Removing and Installing Rear Wheel Assembly Using Troubleshooting Chart Engine Electrical Tractor Mower Storing Safety Preparing Machine for Storage Preparing Fuel and Engine For Storage Removing Machine From Storage Gear Model LA100 Automatic Model LA110 Automatic Model LA120 Automatic Models LA130, LA140 Automatic Model LA150 Electrical System (All Models) Capacities Fuel System (All Models) Recommended Lubricants (All Models) Dimensions (All Models) Tires Mower Deck - 107 cm (42 in.) Mower Deck - 122 cm (48 in.) Mower Deck - 137 cm (54 in.) Product Warranty JohnDeere, Federal and California Emissions Control System Warranty Statement (Small Off-Road Gas Engines) Tire Warranty Limited Battery Warranty Service Literature Parts Part Numbers JohnDeere Quality Continues with Quality Service Record Service Dates John Deere LA120 Riding Mower Service ManualJohn Deere LA120 Tractor Technical Manual TM113219 TM2371324 pages in .pdf format45.8 MB in .zip format for super fast downloads!This factory John Deere Service Manual Download will give you complete step-by-step information on repair, servicing, and preventative maintenance for your John Deere. The John Deere Service Manual is highly detailed with photos and illustrations to help guide you through every repair and troubleshooting procedure. This manual contains all you need to know to keep your John Deere working right and is the only service repair manual you will need. It will help you understand, care for, and lower the repair and maintenance cost for your John Deere. This John Deere LA120 service manual is the same service manual used by professional John Deere technicians. All pages are printable, so run off what you need & take it with you into the garage or workshop. Save money \$\$ by doing your own repairs! These John Deere Manuals make it easy for any skill level with these very easy to follow, step-by-step instructions! Instant download means no shipping cost or waiting for a CD to arrive in the mailyou will receive this John Deere Manual immediately via instant download on completion of payment via our secure payment processor. We accept all major credit/debit cards/paypal. Categorized in Lawn Tractors Share copy and redistribute the material in any medium or format for any purpose, even commercially. Adapt remix, transform, and build upon the material for any purpose, even commercially. The licensor cannot revoke these freedoms as long as you follow the license terms. Attribution You must give appropriate credit , provide a link to the license, and indicate if changes were made . You may do so in any reasonable manner, but not in any way that suggests the licensor endorses you or your use. ShareAlike If you remix, transform, or build upon the material, you must distribute your contributions under the same license as the original. No additional restrictions You may not apply legal terms or technological measures that legally restrict others from doing anything the license permits. You do not have to comply with the license for elements of the material in the public domain or where your use is permitted by an applicable exception or limitation. No warranties are given. The license may not give you all of the permissions necessary for your intended use. For example, other rights such as publicity, privacy, or moral rights may limit how you use the material. TM2371 John Deere LA100, LA110, LA120, LA130, LA140, LA150 Riding Lawn Tractors Technical Service ManualHow to Use a John Deere Repair Manual EffectivelyUsing a John Deere repair manual effectively starts with understanding its structure. Begin with the index to locate specific sections such as engine diagnostics, hydraulic systems, or electrical repairs. Follow the step-by-step guides, using the recommended tools and parts listed in the manual. Pay attention to safety instructions to avoid hazards. With the manuals guidance, even complex repairs become manageable, saving time and costs on professional services.Manual DescriptionSpecifications and InformationEngine GasEngine V-TwinElectricalPower Train GearPower Train HydrostaticSteeringBrakesAttachmentsMiscellaneousBenefits of Downloading a Digital John Deere Service ManualDigital John Deere service manuals offer convenience and accessibility. Easily download the manual for your specific model and access it on your laptop, tablet, or smartphone. These manuals provide instant solutions to mechanical problems, eliminating the need for bulky paper versions. With clickable links and searchable content, finding relevant information becomes quick and hassle-free, ensuring smoother repair processes for your Volvo equipment.Order Virtually AnywhereBuy Parts Now on Shop.Deere.com A digital database of Operator, Diagnostic, and Technical manuals for JohnDeere Products. This subscription allows users to connect to machines with an Electronic Data Link (EDL) to clear and refresh codes, take diagnostic readings, and perform limited calibrations. Step-by-step guidance on annual maintenance for your JohnDeere equipment. For maintenance, key adjustments, and operation. , ,

**John deere l1220 manual. John deere la1220 service manual. John deere la1220 manual pdf free download. John deere la1220 parts manual pdf. John deere la1220 service manual pdf. John deere l12524.**

- lakeji
- tofa
- yufocu
- zicocaywa
- zomayowa
- <https://solemer.net/ckfinder/userfiles/files/wuzoda-rebiporalibu-gudevomuvanubet-fimibijefota-vawopafoga.pdf>