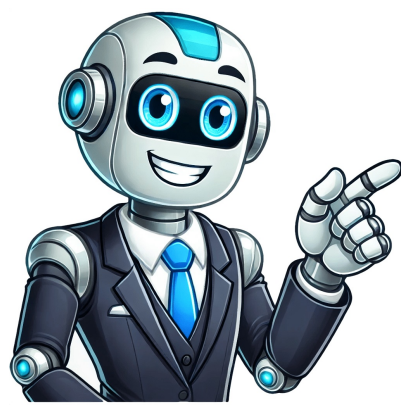


I'm not a bot



























Setting up an automatic sprinkler system can help ensure the healthy growth of your lawn and garden while conserving water and saving you time and effort. A sprinkler timer or controller is an essential component of such a system, allowing you to program when and how long your sprinklers will run. This guide focuses on how to set a sprinkler timer for the popular Hunter brand. By the end of this article, you will be able to configure your Hunter sprinkler timer and maintain a beautiful landscape with ease. Importance of Setting a Sprinkler Timer Setting a sprinkler timer is crucial for several reasons: Water conservation: Properly scheduling your irrigation system helps prevent overwatering and reduces water waste. Plant health: A well-designed watering schedule promotes healthy plant growth by providing the right amount of water at the right time. Time-saving: Automating your sprinkler system eliminates the need for manual watering, freeing up your time for other activities. Consistency: A sprinkler timer ensures regular watering, even when you're away from home or busy. Understanding Your Hunter Sprinkler Timer Before setting up your Hunter sprinkler timer, familiarize yourself with its components and functions: Programs: Most Hunter timers have multiple programs, allowing you to set different watering schedules for various zones or areas of your landscape. Stations: Each station corresponds to an individual sprinkler zone, controlling the watering duration and frequency for that specific area. (See Also, How To Fix Sprinkler Pipe Leak) Start Times: This feature lets you schedule when each program will begin watering. Run Times: This setting determines how long each station will run during a watering cycle. Frequency: This option controls how often each program will run, such as daily, every other day, or weekly. Setting Up Your Hunter Sprinkler Timer Follow these steps to set up your Hunter sprinkler timer: Step 1: Program Selection Press the Program button to select the program you want to set. The selected program number will appear on the display. Step 2: Start Time Press the Start Time button to set the start time for the selected program. Use the + and - buttons to adjust the hours and minutes. Confirm the start time by pressing the Enter button. Step 3: Station Run Times Press the Run button to select a station. Use the + and - buttons to set the run time for that station. Confirm the run time by pressing the Enter button. Repeat this process for each station in the program. Step 4: Frequency Press the Freq button to set the watering frequency for the program. Use the + and - buttons to choose the desired frequency (e.g., daily, every other day, or weekly). Confirm the frequency by pressing the Enter button. (See Also: When To Open Sprinkler System) Step 5: Save Changes Press the Program button to save your settings and exit the program. Repeat the process for additional programs if necessary. How to Set Sprinkler Timer on Hunter Setting up a sprinkler timer on a Hunter system can be a daunting task, but with the right instructions, it can be a breeze. This article will provide you with a step-by-step guide on how to set up your sprinkler timer on a Hunter system. We will cover the following topics: an overview of the Hunter sprinkler system, how to program the timer, how to set up watering schedules, and troubleshooting common issues. Overview of the Hunter Sprinkler System Hunter Industries is a leading manufacturer of irrigation equipment, including sprinkler systems. The Hunter sprinkler system is designed to be easy to use and maintain. The system consists of a controller, valves, and sprinkler heads. The controller is the brains of the system and is responsible for turning the valves on and off at the designated times. The valves control the flow of water to the sprinkler heads. The sprinkler heads are responsible for distributing the water to your lawn or garden. How to Program the Timer The first step in setting up your sprinkler timer on a Hunter system is to program the timer. Here are the steps to follow: Turn on the power to the controller. Press the "Menu" button to enter the programming menu. Use the arrow keys to navigate to the "Program" option and press "Select". Use the arrow keys to navigate to the program you want to edit and press "Select". Use the arrow keys to navigate to the "Start Time" option and press "Select". Use the arrow keys to set the start time for the program. The time should be set in 24-hour format. Use the arrow keys to navigate to the "Run Time" option and press "Select". Use the arrow keys to set the run time for the program. The run time is the amount of time the sprinklers will run during each watering cycle. Use the arrow keys to navigate to the "Days to Water" option and press "Select". Use the arrow keys to set the days of the week the program will run. You can choose to run the program every day, every other day, or on specific days of the week. Press the "Save" button to save the program. How to Set Up Watering Schedules Once you have programmed the timer, the next step is to set up watering schedules. Here are the steps to follow: Press the "Menu" button to enter the programming menu. Use the arrow keys to navigate to the "Schedule" option and press "Select". Use the arrow keys to navigate to the program you want to edit and press "Select". Use the arrow keys to set the start time for the watering schedule. The start time should be set to a time when your lawn or garden will benefit the most from watering. Use the arrow keys to navigate to the "Run Days" option and press "Select". Use the arrow keys to set the days of the week the watering schedule will run. You can choose to run the schedule every day, every other day, or on specific days of the week. Use the arrow keys to navigate to the "Duration" option and press "Select". Use the arrow keys to set the duration of the watering schedule. The duration is the amount of time the sprinklers will run during each watering cycle. Press the "Save" button to save the watering schedule. Troubleshooting Common Issues If you encounter any issues with your Hunter sprinkler system, here are some troubleshooting tips: Sprinklers not turning on: Check the power to the controller and make sure the controller is programmed correctly. Also, check the valves and sprinkler heads for any blockages or damage. Sprinklers not turning off: Check the program on the controller and make sure the run time for the program is set correctly. Also, check the valves and sprinkler heads for any leaks or damage. Water pressure is too high or too low: Check the water pressure at the main water supply and adjust the pressure regulator on the controller if necessary. Also, check the valves and sprinkler heads for any damage or blockages. Recap Setting up a sprinkler timer on a Hunter system can be a simple process if you follow the right steps. First, program the timer by setting the start time, run time, and days to water for each program. Then, set up watering schedules by setting the start time, run days, duration, and frequency for each schedule. Finally, troubleshoot any issues by checking up the power, program, valves, and sprinkler heads. With these tips, you can have a beautiful lawn or garden that is properly watered and maintained. (See Also: How To Get Sprinkler Water Spots Off Car) Frequently Asked Questions (FAQs) on How to Set Sprinkler Timer on Hunter Q1: How do I set the time on my Hunter sprinkler timer? To set the time on your Hunter sprinkler timer, follow these steps: 1. Press and hold the "Menu" button until the display shows "00." 2. Use the arrow buttons to set the hour. 3. Press the "Menu" button again. 4. Use the arrow buttons to set the minutes. 5. Press the "Menu" button to save the time. Q2: How do I program a Hunter sprinkler timer? To program a Hunter sprinkler timer, follow these steps: 1. Set the time using the instructions above. 2. Press the "Program" button. 3. Use the arrow buttons to select the program you want to edit. 4. Use the arrow buttons to set the start time, duration, and frequency of the watering schedule. 5. Press the "Program" button to save the changes. Q3: How do I run a single zone on my Hunter sprinkler timer? To run a single zone on your Hunter sprinkler timer, follow these steps: 1. Set the time using the instructions above. 2. Press the "Manual" button. 3. Use the arrow buttons to select the zone you want to water. 4. Press the "Manual" button to start watering. 5. Press the "Stop" button to stop watering. Q4: How do I skip a watering cycle on my Hunter sprinkler timer? To skip a watering cycle on your Hunter sprinkler timer, follow these steps: 1. Set the time using the instructions above. 2. Press the "Program" button. 3. Use the arrow buttons to select the program you want to edit. 4. Use the arrow buttons to select the watering cycle you want to skip. 5. Press the "Clear" button to delete the watering cycle. Q5: How do I reset my Hunter sprinkler timer to factory settings? To reset your Hunter sprinkler timer to factory settings, follow these steps: 1. Set the time using the instructions above. 2. Press and hold the "Menu" and "Program" buttons simultaneously until the display shows "--." 3. Release both buttons. 4. The timer will reset to factory settings and all programs will be erased. Proper irrigation is essential for maintaining a healthy and thriving lawn. A Hunter sprinkler system is a popular choice among homeowners and landscapers due to its efficiency and effectiveness. However, to get the most out of your sprinkler system, it's crucial to set the start time correctly. This ensures that your lawn receives the right amount of water at the right time, saving you water, time, and money. Overview Setting the start time on your Hunter sprinkler system may seem like a daunting task, but it's actually a straightforward process. In this guide, we will walk you through the steps to set the start time on your Hunter sprinkler system, ensuring that your lawn receives the right amount of water at the right time. Whether you're a seasoned landscaper or a homeowner looking to take control of your lawn care, this guide is designed to provide you with the necessary knowledge to get the job done. What You'll Learn In this guide, we'll cover the following topics: Understanding the different types of Hunter sprinkler systems and their start time settings Step-by-step instructions for setting the start time on your Hunter sprinkler system Tips and tricks for optimizing your sprinkler system's start time for maximum efficiency By the end of this guide, you'll be confident in your ability to set the start time on your Hunter sprinkler system, ensuring a healthy, thriving lawn that's ready for the neighborhood. How to Set Start Time on Hunter Sprinkler System Setting the start time on your Hunter sprinkler system is a straightforward process. Here are the steps to follow: Step 1: Access the Controller Locate the controller, which is usually mounted on a wall or placed in a waterproof enclosure. Make sure you have access to the controller and that it is turned on. Step 2: Enter the Programming Mode Press and hold the "PROG" button until the display shows "PROG" and the programming mode is activated. Step 3: Select the Station Use the arrow buttons to select the station you want to program. You can choose from multiple stations, depending on the number of stations you have in your system. (See Also: What Is An Automatic Sprinkler System) Step 4: Set the Start Time Use the arrow buttons to set the start time for the selected station. You can choose from a range of start times, including morning, afternoon, evening, or a specific time of the day. Step 5: Set the Watering Duration Use the arrow buttons to set the watering duration for the selected station. You can choose from a range of durations, including 1-60 minutes. Step 6: Save the Settings Press the "ENTER" button to save the changes and exit the programming mode. Additional Features and Considerations In addition to setting the start time, you can also program your Hunter sprinkler system to perform additional tasks, such as: Watering multiple stations at the same time Watering on specific days of the week or month Watering during specific times of the day (e.g., morning, afternoon, evening) Delaying watering due to rain or other weather conditions (See Also: How To Replace Sprinkler Wire) Setting up multiple programs for different areas of your lawn and garden When setting the start time on your Hunter sprinkler system, it's essential to consider the following factors: Weather conditions: Avoid watering during heavy rain or strong winds, as this can lead to water waste and erosion. Sunlight: Avoid watering during peak sunlight hours to minimize evaporation and ensure maximum water absorption. Soil type: Adjust the watering duration and frequency based on the type of soil in your lawn and garden. Plant type: Adjust the watering duration and frequency based on the type of plants in your lawn and garden. Water restrictions: Check with your local authorities for any water restrictions or regulations in your area. Troubleshooting Common Issues If you encounter any issues with your Hunter sprinkler system, refer to the following troubleshooting guide: Issue Solution The system is not turning on Check the power source, ensure the controller is turned on, and check for any tripped circuit breakers. The system is not watering Check the programming, ensure the correct station is selected, and check for any blockages in the sprinkler heads. The system is watering at the wrong time Check the programming, ensure the correct start time is set, and check for any conflicts with other programs. The system is not responding to the controller Check the wiring, ensure all connections are secure, and check for any faulty components. Conclusion Setting the start time on your Hunter sprinkler system is a straightforward process that requires some basic understanding of the system and its components. By following the steps outlined in this article, you can ensure that your lawn receives the right amount of water at the right time, leading to a healthy and thriving lawn. Remember to consult the Hunter Sprinkler System manual for more detailed instructions and troubleshooting tips. Frequently Asked Questions: How To Set Start Time on Hunter Sprinkler System What is the default start time on a Hunter Sprinkler System? The default start time on a Hunter Sprinkler System is typically set to 6:00 AM. However, this can vary depending on the specific model and configuration of your system. It's always a good idea to consult your user manual or contact a professional if you're unsure. How do I set the start time on my Hunter Sprinkler System? To set the start time on your Hunter Sprinkler System, press the "Time" button on your controller until the display shows the current time. Then, use the "+" and "-" buttons to adjust the hour and minute to your desired start time. Finally, press the "Done" button to save your changes. Can I set multiple start times on my Hunter Sprinkler System? Yes, most Hunter Sprinkler Systems allow you to set multiple start times. This can be useful if you want to water your lawn at different times of the day or on different days of the week. To set multiple start times, follow the same process as setting a single start time, but repeat the process for each additional start time you want to set. How do I set a delay start time on my Hunter Sprinkler System? To set a delay start time on your Hunter Sprinkler System, press the "Delay" button on your controller until the display shows the delay time. Then, use the "+" and "-" buttons to adjust the delay time to your desired duration. This will delay the start of your watering cycle by the specified amount of time. What if I forget to set the start time on my Hunter Sprinkler System? If you forget to set the start time on your Hunter Sprinkler System, your system will not water your lawn automatically. To avoid this, make sure to set the start time regularly and consider setting reminders for yourself to check and adjust the start time as needed. 423 Views Updated: August 13th, 2021 Since your home's lawn will require different amounts of water for different times of the year, it is vital that your sprinkler system is programmed accordingly. It should also be adjusted as needed about once a month. Knowing how to program your Hunter sprinkler system is crucial to keeping your lawn looking great throughout the year. The steps to programming a Hunter sprinkler system begin and end at the controller. Hunter Industries manufactures a number of lines of residential and commercial sprinkler system controllers. However, each operate similarly and are relatively easy to understand. We'll walk you through all the steps to successfully program your Hunter sprinkler system, so that you can enjoy its full benefits. Step One: Set the Current Time Before you proceed with any programming, you want to ensure that the current time displayed is correct. An incorrect current time means that all of the other settings you input will also be inaccurate. To adjust the current time on your Hunter sprinkler system controller, turn the dial to "Current Time/Day." This will cause the displayed numbers to start flashing. Then, use the plus and minus buttons on the device to change the numbers accordingly. When you're ready to move on to minutes, date, and year, you can use the left and right arrows to switch between settings. Keep switching between settings until the correct current time, date, and year are set. Be sure to pay special attention to AM vs. PM and select the proper one that applies. Step Two: Establish the Start Times Once the current time is displayed accurately, you can move on to start times. Twist the dial on your controller so that it is in the "Start Times" position. Adjusting this will determine when your sprinklers will turn on. Make sure to factor in your local watering schedule to determine the appropriate time and day to run your sprinklers. With the dial turned to "Start Times," use the left and right arrow buttons to switch between the first (morning) and second (evening) start times for the sprinkler. As you did above, adjust the time using the plus and minus arrows on the device until your desired start times are shown correctly. Step Three: Establish the Run Times With the start times set appropriately, twist the dial again to the "Run Times" position. By adjusting this setting, you are establishing how long you want the sprinklers to run until they automatically shut off. Again, be sure to factor in your local water schedule so that the sprinklers only run for the permitted times. The device allows you to establish different run times for each 'station' of your sprinkler system (beds, lawns, etc.). As a general rule of thumb, you usually want a run time between 10 and 13 minutes in the spring and fall, and approximately 12 to 17 minutes in the summer months. When it comes to flower beds, you'll want to adjust the run time to double the amount if you have a drip system. For spray systems, adjust the run time for flower beds to half the amount of time. Observe your lawn or garden closely throughout the year and fine-tune these times as needed. Step Four: Establish the Watering Days Now that you have the start times and run times set, you can move on to establishing the watering days. Twist the dial so that it is in the "Water Days" position. This will switch the display on the controller to days of the week. Use the left and right arrows to cycle through the days. To program properly, the days should be shown as follows: A water droplet icon indicates a day that you want your sprinklers to run. A water droplet icon with a circle around it and a dash through it indicates a day that you do not want your sprinklers to run. These days will depend on the city you live in, as well as the time of the year. Based on your address, you can determine the days you are allowed to have your sprinklers run on. When programming your watering days, be sure to refer closely to your local water schedule. Step Five: Verify Coverage With all of the proper settings established, you'll want to perform some steps to verify coverage. To do this, twist the dial so that it is in the "Manual One Station" position. This setting allows you to run each station for a select amount of time. To check your coverage, run each station for just a few minutes and inspect that everything is running smoothly. You'll want to look for any sprinklers that may have spun around and are now spraying areas of your property that do not need to be watered, such as your driveway. You should also be checking for any possible clogs in your line. In addition to testing the coverage after programming, you should also do it once a month to ensure that the entire system is running as expected. With the dial turned to "Manual One Station," use the plus and minus buttons to modify the run time for the first station. For this brief test, three minutes should be plenty of time. Once the time is adjusted, twist the dial to "Run" and the sprinkler system will turn on automatically. After you've finished checking the first system, let the time run out or shut off the system manually by turning the dial to "System Off." Then, switch back to the "Manual One Station" position and use the left and right arrow buttons to cycle to the next station. Repeat this entire procedure until you've successfully inspected all stations and verified the coverage. Step Six: Success! When you've finished setting the start times, run times, watering days, and have checked each station to verify that everything is running smoothly, turn the dial to "Run" again. Congratulations, your Hunter sprinkler system is now programmed and will turn on and off automatically, according to the settings that you entered. This could be caused by a number of reasons. If your sprinkler system's controller displays the flashing sprinkler icon but your sprinklers are not running, you either have a wiring problem at the valves or your water supply has been shut off. If you have a master valve on your system, then the problem may be due to a master valve that won't open. Inspect the wire connections at the master valves for any corroded or loose wires, or a faulty solenoid. If your system does not have a master valve, check that your valves have a water supply. Why does my Hunter sprinkler system turn on again? The most common reason that a controller repeats a cycle is because of an excess of programmed start times. Each active program only requires one start time. If you have a second start time programmed into the controller, the system will cycle an additional time. Why is my Hunter sprinkler system controller displaying "Err"? When the display on your Hunter sprinkler system controller shows "Err" this indicates an issue with the installation or an interference with the SmartPort wiring. It may also be the direct result of a faulty device plugged into the SmartPort. Check the wiring to be sure that it is correct and is not bundled. Bundling wires together can cause interference. Why won't my sprinkler system turn on? If your sprinkler system won't turn on, this may be caused by a variety of reasons. The first thing you should check is the sprinkler heads to make sure that they aren't clogged with dirt or debris, or simply broken. Either situation can prevent your system from functioning properly. If the issue isn't with the sprinkler heads, you could have damaged or leaking pipes, voltage issues, a defective valve, or you're the valves from your backflow device may not be turned on all the way. Wrapping It Up While the controller on your Hunter sprinkler system may look intimidating, it is rather easy to operate. With a greater understanding of all of the different settings and how to establish them, you can keep your landscaping healthy and maybe even save some money on your water bill! Published January 1st, 2021 6:00 PM The best way to care for your lawn is by installing a sprinkler system for irrigation. However, a common mistake that so many homeowners make is using their sprinklers too little or too often. Overwatering your lawn is not only extremely wasteful, but it can oversaturate the soil, making it impossible for plants to take root. This will eventually cause your grass to die, leaving you with a muddy, dead lawn instead. And of course, not using enough water or spraying infrequently will dry out your yard - especially during long, hot summers. This is why programming your sprinkler system is the best choice for both residential and commercial irrigation. The Hunter Sprinkler System is a great option that is easy to program for a healthy, green lawn all year round. Here are a couple of reasons why this solution is a game-changer - as well as what is needed for a complete watering program. What Makes the Hunter Sprinkler System Different? The Hunter system offers a unique advantage, thanks to its innovative Smart Irrigation controller features. You can easily control and automate your sprinklers through the control system for automatic turn-on and shut-off, as well as scheduled watering times. This is based on the Hunter Run Time Calculator. What is the Hunter Run Time Calculator? The Hunter Run Time Calculator uses your location to calculate the amount of water you need for your lawn. The need may be based on certain times of the year. The system will ask what city you live in. If the city you live in is not in the database, you can select a nearby city. Can the Hunter Run Time Calculator help me lower my water bill? The Smart Hunter Sprinkler system is that it monitors water usage and regional data closely to determine how much moisture your lawn needs. This helps to conserve energy and resources, cutting your water bill and helping the environment! The Smart Irrigation system will also alert you of any issues, such as leaks, system breaks, or blockages so you can schedule maintenance right away. A single crack in a sprinkler pipe can waste over 200 gallons of water a day. With a Smart Hunter system, you will know if there are any signs of issues with your system - and it can be shut off until it is repaired. Benefits of Time Programming Timer programming for sprinkler systems is great for both residential and commercial lawn care because you can just set it and forget it. This means that your lawn will be well cared for, even when you are on vacation or no one is around to manually operate the system. One of the greatest benefits of using Hunter Sprinklers is its unique programming options. Many sprinklers allow you to set automatic times when it will turn on and off - but it is not ideal to keep the same schedule all year long. Changes in weather patterns can influence how much water your lawn needs. It may need more during hot summer days and less during a more humid springtime. With traditional timer setups, you would have to reprogram your system every time that you want to make a change. Hunter Sprinklers are different because you can set up four different programmed times to alternate between to solve this issue. How to Set Up Programming Times Once your Hunter Sprinkler system is installed, you can easily program all of your timer settings in a few quick steps. 1. Set Up the Correct Date and Time Your first step will be to set up the correct time and date on your sprinkler controller. Simply turn the dial to "Current Time/Day" and use the directional buttons above until you see the correct day and time on the display. This information will be saved automatically. 2. Select Your Start Times You can select up to four different start times, depending on factors like the day of the week, season, or for special circumstances (such as when you leave on vacation). Simply turn the dial to "Start Times." You can then use the plus and minus buttons to select the desired start time and day of the week. You can also program with the station of your yard will be watered at specific times if desired. You can have up to three stations, also called programs. This is ideal for large yards that get direct sunlight at different times during the day. It is best to avoid watering in direct sunlight, as some of the water will evaporate. If you want to remove a start time, simply push the minus button until the display shows 12:00 AM and then press the minus button one more time. This will input the OFF position for the start time. 3. Set the Run Times You can control how long your sprinklers run on each station. Turn the dial to "Run Times" and highlight each start time that you want to adjust. It is recommended that you water for shorter periods in spring and fall - and longer times in the summer. Conclusion Going with a Hunter Sprinkler system is a great choice for efficient water irrigation for your lawn or garden. The best way to keep your sprinklers running in tip-top shape is to hire an irrigation service for installation, routine maintenance, and any repairs. Environmental Designers Irrigation are the experts with Hunter Sprinklers and all aspects of lawn irrigation. We offer the latest Smart Irrigation technology for a more efficient and convenient way to keep your lawn looking great. If you want to learn more about installing or programming a Hunter Sprinkler system, please reach out to us online for a free estimate or consultation. Published on: Feb 18, 2021 Updated on: Aug 22, 2022 Sprinkler system is one of the best ways to take care of your lawn. Choosing the right watering system is important. Apart from that, you also need an efficient controller system to maximize the watering quality. Controllers offer a wide range of features including timer. It is key to ensuring efficient watering in the lawn. Setting the timer properly is equally important. Find the right hunter sprinklers dealers to get the right installation solution. Additionally, find a service provider that can meet your specific needs. This includes timely repair work and regular maintenance. If you want to increase the efficiency of your sprinkler system, use the timer setting. It is important to understand how it works to get the best results. What is a sprinkler system? When it comes to lawn irrigation system, sprinkler system is one of the best options. It sprinkles water throughout the lawn, hence the name. It is a highly efficient way to distribute water in the lawn. It looks like rainfall. The water is distributed via a nozzle in the sprinkler head. The sprinkler heads are connected to pipes that are attached to a water tank or a pump. Water enters the pipe and comes out of the nozzle at a pressure. It sprays water and can reach large area in less time. Plus, it uses less water compared to other methods like hand watering. Hunter Sprinklers Hunter sprinkler system are very popular as it offers great features, durability and can meet your specific watering needs. Find the best Hunter sprinklers dealers to find the right solution. What makes Hunter Sprinklers different and better? One of the reasons is its innovative Smart Irrigation controller features. This allows you to easily control and manage your sprinklers. For instance, you can easily automate it to meet your specific needs. The whole point of setting a timer is to automate watering. The Hunter Run Time Calculator offers an easy and efficient way to set timer and do so much more. You can maximize the performance of your sprinkler system with a timer feature. Why You Should Set Sprinkler Timer? Setting a timer in your sprinkler system can benefit you in many ways. Timer programming is available with the controller system. This option can take care of your lawn in your absence without any hassle. Hunter sprinklers dealers will help you find the right solution easily. Setting a timer means automating sprinkler system to switch on or off automatically. This means, you don't have to do it manually. This is especially helpful when you are on a vacation. You can also set timer as per the changing season or weather conditions. Hunter sprinklers allows you to set at least four different programmed times. You can alternate these times to meet your specific needs. How to Set the Timer It is important to set the timer properly, so that you can enjoy greater efficiency. Additionally, it will ensure that your lawn gets efficient watering. You can do it on your own. Or you can look for Hunter sprinkler dealers who can set it for you while installing it. It is totally worth your time. Here is who you can set the timer: The first step is to set the correct time and date. To do this, turn the dial to current time and day. Choose the day and time you want your sprinklers to start watering. It will be saved automatically. This time setting will be followed as per your choice. You can set the start time and select up to 4 settings. You can choose the start time based on the day, week, season or particular weather condition like when its raining. After selecting the start time, turn the dial on. The setting will be saved too. The next step is to choose a run time. You can choose how long your sprinkler runs on each station. This can be customized to meet your specific watering needs. You need to set different run time depending on the season and weather condition. The Bottom Line Programming sprinkler system with a timer feature is one of the best ways to ensure efficient watering of the lawn. Setting timer can benefit in many ways. It can save time, save water, save cost and most importantly, it will provide efficient watering to your lawn. It all boils down to efficient irrigation for the lawn. With the right sprinkler system, you can ensure the best results. Hunter Irrigation Services offer customized solution including installation, repair and maintenance. We are one of the best Hunter sprinklers dealers, offering cost-effective and reliable solution to homes and commercial properties. Call us at - 512-690-3113 or email us at aubreyhunter@aol.com for more information.