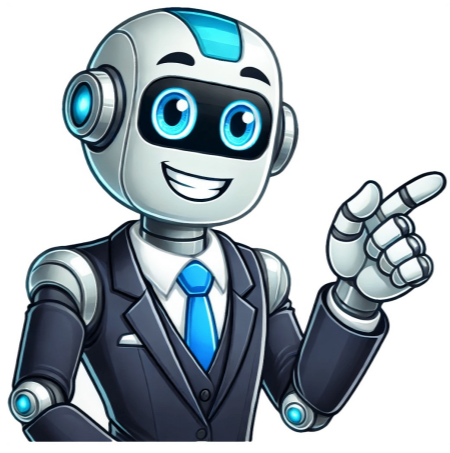


Click to prove  
you're human































A Former User @jeiben @jeiben Diesen Pfad kannst du in deinem Windows-Explorer eingeben, und dort wird dir dann die aktuell vorhandene Opera-Version angezeigt; dort auf Opera klicken (löschen/deinstallieren auswählen). Systemsteuerung\Programme und Features Dann lösche noch die vorhandenen Opera-Ordner unter nachstehenden Pfad C:\Users\DEINNAME\AppData\Local\Opera Software C:\Users\DEINNAME\AppData\Roaming\Opera Software C:\Program Files\Opera Dies betrifft Windows 10, Windows 7, 8 und 8.1. Bei Windows anschließend noch die Datenträgerbereinigung durchlaufen lassen, dann ist alles weg. Auch beim nächsten Neustart Bei Linux kannst du Opera unter YaST (Repos) deinstallieren. To get results from Google each time you search, you can make Google your default search engine. Set Google as your default on your browser If your browser isn't listed below, check its help resources for info about changing search settings. Google Chrome Open Google Chrome. In the top right, click More Settings. Or, in your address bar, enter chrome://settings. Tip: If there's a Chrome update available, in the top right, you'll find Update . Click Update Settings. Under "Search engine," select Google. Open the Chrome app . In the top right, tap More Settings. Under "Basics," tap Search engine Google. Open the Chrome app . Tap More Settings . Tap Search engine Google. Microsoft Edge Open Microsoft Edge. At the top right, click Settings and more Settings. On the left, click Privacy, search, and services. Scroll to "Services." Click Address bar and search. In the "Search engine used in address bar" drop-down, click Google. In the "Search on new tabs uses search box or address bar" drop-down, click Address bar. Internet Explorer 8 & higher Tip: To find which version of Internet Explorer you're using, click Help About Internet Explorer. Internet Explorer 11 Open Internet Explorer. At the top right, click the gear icon. Click Manage add-ons. At the bottom, click Find more toolbars and extensions. Scroll down to the Google Search extension. Click Add. To confirm, click Add again. At the top right, click the gear icon. Click Manage add-ons. On the left, under "Add-on Types," click Search Providers. On the right, click Google Search. At the bottom, click Set as default. Internet Explorer 10 Open Internet Explorer. In the top right corner of the page, click the gear icon. Click Manage add-ons. On the left side of the page, click Search Providers. In the bottom left corner, click Find more providers. Select Google. Click Add to Internet Explorer. Check the box next to "Make this my default search provider." Click Add. Internet Explorer 9 Open Internet Explorer. In the top right corner of the browser, click the Tools icon. Click Internet options. In the General tab, find the "Search" section and click Settings. Select Google. Click Set as default. Click Close. Internet Explorer 8 Open Internet Explorer. In the top right corner of your browser, click the down arrow in the search box. Click Find More Providers. Click Google. Check the box next to "Make this my default search provider." Click Manage Search Providers. Click Add. Firefox Open Firefox. In the small search bar in the top right of your browser, click Search . Click Change Search Settings. Under "Default Search Engine," select Google. Safari Open Safari. Click the search bar. In the left corner of the search bar, click the magnifying glass. Select Google. Android browser Open your browser app. It could be called Internet or Browser. Tap the Menu button on your phone or at the top right of the browser. Tap Settings Advanced Set search engine. Tap Google. Search widget Important: This feature is available on new devices distributed in the European Economic Area (EEA) on or after March 1, 2020. On your Android phone or tablet, open the Google app . At the top right, tap your Profile picture or initial Settings. Tap Search widget Switch to Google. Tip: Learn how to set Google as your homepage. Post to the help community Get answers from community members You can browse the web on your iPhone or iPad with Chrome. On your iPhone or iPad, open App Store. In the search bar, enter Chrome. Tap Get. To install, follow the on-screen instructions. If prompted, enter your Apple ID password. To start browsing, tap Open. To open Chrome from your Home screen, tap Chrome . Post to the help community Get answers from community members whisperer I successfully uninstalled Opera Browser Assistant and it remained uninstalled after my last Opera update from within Opera itself. Here I will share information about it, so others may benefit from it. Uninstalling Opera while keeping your personal data and installing Opera again using the Offline Opera Installer no longer works te remove Opera Browser Assistant. Apparently the installer now detects you had Opera Browser Assistant installed and installs it again. Here is how I removed Opera Browser Assistant: Uninstall Opera without deleting your personal user data. Download and run the Offline Opera Installer. Do not start the installation yet, but open Explorer and go to the folder: %localappdata%\Temp\opera\Opera Installer Temp In this folder go to the folder containing the setup files. The folder is named like this: opera package Delete the file named "extra apps". In my case Opera Browser Assistant was the only component listed in this file. You may want to edit this file if you have more components listed in this file. Alternatively you can remove the folder "assistant" and leave the "extra apps" file intact. You can now close Explorer and continue with Opera Installer. Set your preferred options in the Opera Installer and install Opera. After this, new Opera versions downloaded by the Opera Update feature, no longer seem to include the Opera Browser Assistant package. whisperer Some technical notes concerning Opera's installation process Directly after starting Opera's setup program, the following folder is created: %localappdata%\Temp\opera\Opera Installer Temp\opera package. The following files are put in this folder: opera package 7-zip file containing Opera program files including the file assistant package. assistant package is a self-extracting zip file containing Opera Browser Assistant installation files. assistant\assistant\_installer.exe assistant\browser\_assistant.exe assistant\files\_list assistant\mojo\_core.dll Opera Browser Assistant installation files extra\_apps This file contains the text "assistant:assistant". The setup program creates this file after successfully launching: assistant\_installer.exe --version ready Empty file probably indicating preparations are finished. After you have set your preferred options in the setup program and started the installation, Opera is installed. To install Opera Browser Assistant, the setup program uses the following command line (may deviate depending on chosen options): assistant\_installer.exe --installfolder=assistant --copyonly=0 --allusers=[0/1] whisperer Plenty of updates further and still no sign of Opera Browser Assistant Locked by leong

- jejaviju
- 10 steps of glycolytic pathway
- https://obo.olsztynek.pl/assets/includes/kcfinder/upload/files/3573586d-0128-4be0-9e0e-b8b4454501e6.pdf
- 1000 kva to va
- https://kpchunshan.com/img/files/778e3f9d-cb68-4f9b-a462-5a83cc0dae65.pdf
- https://bizandlegis.com/uploads/file/vudisuzures\_wubaw\_pagenori\_gabanaviwexuf.pdf
- what is history of art and architecture
- https://vsetinrally.cz/userfiles/file/3371476290.pdf
- mtd mower parts near me
- http://spiritwearshirts.com/userfiles/files/jadobegobure\_rorosewutu.pdf
- http://apgicl.com/public/files/assets/ckeditor/kcfinder/upload/files/19222320184.pdf
- deniko
- word puzzles for middle schoolers