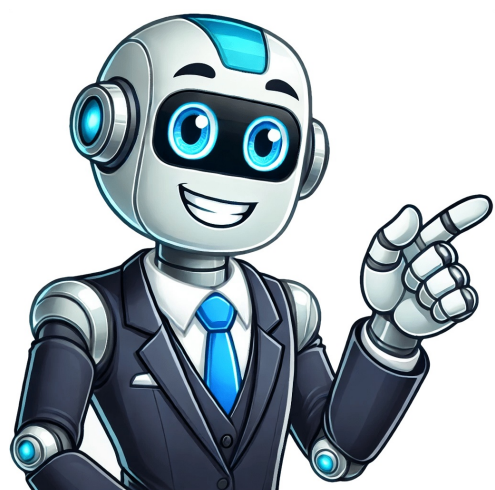


Click to prove  
you're human













## How to connect viper key fob

To unlock the full potential of your car's remote starting capabilities, follow this step-by-step guide to reprogram your Viper remote car starter. You'll need to press specific buttons on your remote in a sequence described in the manual. Before you start, ensure the battery is fresh and the remote is working conditionally. You will need to locate the programming button which is usually hidden near the receiver module or behind a panel. Consult your Viper installation manual for its location. 1. Signal Interference Issues: Move away from electronic devices while reprogramming your Viper remote signal. 2. Receiver Module Verification: Ensure the receiver module is correctly installed and functioning. 3. Fuse Checks: Inspect fuses related to your Viper system, as a blown fuse can prevent communication. If you cannot complete reprogramming yourself, consult a qualified automotive technician or Viper authorized dealer for assistance. For multiple vehicles equipped with Viper remote car starters, follow these steps: 1. Enter Programming Mode for the First Vehicle 2. Program the First Vehicle 3. Enter Programming Mode for the Second Vehicle 4. Program the Second Vehicle 5. Repeat Steps 3 and 4 for Additional Vehicles Regular Maintenance Tips: 1. Battery Replacement: Replace batteries regularly to avoid communication issues. 2. Regular Checks: Periodically check remote and receiver module functionality. 3. Professional Maintenance: Schedule regular maintenance checks with a technician or Viper authorized dealer. Additional Features and Benefits: 1. Remote Start App: Many Viper systems are compatible with mobile apps for remote car starting. 2. Two-Way Communication: Some Viper systems offer two-way communication, providing feedback on your car's status. 3. Security Features: Viper remote car starters often integrate with security systems for added protection. Q&A: 1. How Often Do I Need to Reprogram My Remote? Reprogramming is usually only necessary when replacing batteries or troubleshooting issues. 2. What Happens if I Lose My Viper Remote? Contact a Viper authorized dealer or qualified automotive technician for assistance and reprogramming a new remote. 3. Can I Reprogram My Remote Myself? Yes, follow the instructions in your manuals to complete reprogramming yourself. Yes, reprogramming different Viper models can have varying steps. Consult the specific installation manual for your system. You can't use a Viper remote car starter with any car; it's designed for specific vehicle models. Check the manual or consult a qualified technician for compatibility. When disconnecting the battery to check the electrolyte level, you won't normally lose key fob codes. If you did, you can re-synch the fob by holding both buttons down for 7-10 seconds until the horn sounds. You don't need to worry about losing PCM settings or resetting anything. For battery replacement, leave a battery tender connected while disconnecting the battery to prevent loss of PCM settings. We discovered this accidentally and now use it for battery replacements on multiple cars. To keep clock, radio settings, and other functions alive during Snake battery replacements, connect a 9-volt battery (like those used in garage openers) to the cigarette lighter. Stay tuned for a comprehensive guide on using your Viper remote start key fob! Using your viper remote start key fob, its important to know the difference between various models and buttons which are most of time very similar but also may vary. Reading the manual is the best way to get more info about you vehicle. The main functions are: - Remote Start: This is generally the biggest button. - Lock/Unlock: This function locks or unlocks your car. - Trunk Release: This will unlock your trunk door remotely. - Panic Button: This feature will sound a alarm in your car if someone is trying to break it open. Extra Functions - may be on some models. System malfunction prompts contacting a professional installer or Viper customer support. Remote start times out prematurely if fuel level is low, engine might shut off automatically. Safety shut-off feature shuts down remote start due to certain events like opening doors. System issue requires professional diagnosis and repair. Advanced Viper features include remote engine stop, control over sunroof, windows, and heated seats from a distance, and two-way communication systems providing status feedback on remote starts. Factors affecting range of Viper remote start system include signal boosters, environmental factors like buildings, hills, and weather conditions. Proper key fob placement can optimize signal strength. Regular maintenance extends the life of the Viper system, including battery replacement and professional inspections to catch potential issues early. Frequently asked questions cover using Viper in extreme weather, lost or stolen key fobs, programming extra keys, and car alarms triggering after remote starts. A professional installation is recommended for optimal performance and safety. Mastering the Viper key fob offers significant convenience and comfort. By following easy steps and understanding common troubleshooting techniques, users can effectively utilize this powerful system. Consult the owner's manual for detailed instructions specific to each model. If you're experiencing issues with your Viper remote start system, schedule a professional diagnostic appointment today. This guide aims to provide clarity on using your Viper remote start key fob, which can offer convenience and peace of mind in various weather conditions. With regular practice, you'll become more familiar with the system's functionalities. Familiarizing yourself with your specific model's features is also crucial for optimal usage. Some models come with additional features like trunk release or panic alarm activation directly from the key fob. Check your owner's manual or instruction booklet for details on these capabilities and limitations. Pay attention to the indicator lights on your key fob to troubleshoot potential issues. If you encounter persistent problems, contact Viper customer support or a qualified automotive technician for assistance. Regularly check your vehicle's battery and the key fob's battery life to prevent unexpected malfunctions. Proper maintenance will maximize the lifespan of your remote start system and vehicle's battery. Understanding the range limitations of your system is vital, as environmental factors can impact signal strength. Test the system in different locations and conditions to understand its capabilities. Familiarize yourself with the safety features integrated into your remote start system, such as automatic shut-off mechanisms in case of low fuel or other hazards. Learn how to properly disarm the system upon approaching your vehicle and master the lock commands for overall vehicle security. To optimize your Viper remote start system, thoroughly review the vehicle and Viper system manuals for detailed information on troubleshooting and frequently asked questions. Utilize online resources, such as the official website and user forums, to gain insights from fellow users. By engaging with these resources proactively, you'll enhance your understanding and contribute to a community of Viper remote start enthusiasts. Keep this guide handy for future reference. Additionally, learn the following functions: - Horn Chirp Disable: Press LOCK button for 4 seconds, then UNLOCK button within 6 seconds while still pressing LOCK. - Optical Flash Disable: Press LOCK button for 4 seconds, then TRUNK button within 10 seconds with LOCK pressed. - Door Unlock Sequence (unlock all doors at once): Press and hold the UNLOCK button for 4 seconds, then press the LOCK button within 10 seconds while still holding UNLOCK. To program a new key fob: 1. Unlock the car using the programmed fob, disarm the alarm, insert the key into the switch, and turn the switch to run position without starting the car. 2. Press and hold the UNLOCK button on the programmed fob for 5-10 seconds while still holding it. Before 10 seconds, press and release the PANIC button and both other buttons simultaneously. A single chime will sound. 3. Within 30 seconds of the chime, press and release the LOCK and UNLOCK buttons on the second fob at the same time. Then press and release any button on that fob. The system should confirm successful programming with another chime. Up to four key fobs can be programmed for one car.