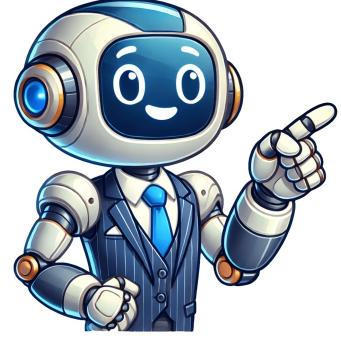


I'm human



2024 volkswagen passat owners manual

The 2024 Volkswagen Passat Variant offers a spacious and comfortable estate car experience, blending performance with practicality. Key specifications include various engine options and transmissions, such as a turbocharged 1.5-liter gasoline engine and a 6-speed manual transmission. The new Volkswagen Passat's exterior design has evolved gradually from its predecessor, with a focus on refinement rather than a complete overhaul. Under the hood, there have been significant changes, including the introduction of a mild-hybrid gasoline engine system, which pairs 1.5-liter engines with electric motors and eTSI cylinder deactivation technology to produce up to 148 HP. Customers can also opt for more powerful variants, such as a 201-HP 2-liter engine or a 261-HP model that comes standard with all-wheel drive. In addition to its updated powertrains, the new Passat features a range of advanced technologies and convenience features, including semi-automatic parking and built-in driver assist programs. For those looking for more information about their vehicle, Volkswagen offers a comprehensive range of literature, including owner's manuals, maintenance guides, and tutorials on emissions, service, entertainment, and navigation. The Passat nameplate has a rich history dating back to 1972, when it was first introduced as a large family car. Over the years, the design and features of the Passat have undergone significant changes, with each new generation building upon its predecessor. In some regions, the Passat has been known by other names, such as the Volkswagen Dasher or Quantum. The latest generation of the Passat, designated as the B8, is primarily targeted towards the European market but also available in limited quantities in the USA. This model shares its MQB platform configuration with other Volkswagen models like the Arteon and offers a range of trims that cater to different tastes and preferences. These trims include the Bluemotion GT, GTE, R Line, S, SE, SE Business, SEL Hybrid Version, and Hybrid Version. In 2015, the Passat GTE was introduced as a plug-in hybrid option, allowing for short trips on electricity only and capturing lost energy from braking. Despite increasing competition in the compact executive car market from models like the Kia Stinger and Tesla Model 3, the Passat remains a significant player worldwide. However, with the end of production in 2022, the historic Passat line came to an end. To commemorate this occasion, Volkswagen has released a special "Limited Edition" trim, featuring a Racing Green paint job and stylish 18-inch alloy wheels, along with premium features like heated front and rear seats as standard. This owner's manual applies to all variants and versions of your Volkswagen model, regardless of year. The manual describes all equipment and models without indicating whether it's optional or specific to a particular model type. This means that your vehicle may not have some of the described equipment or it may only be available in certain countries. There may also be descriptions of upgrades for functions that require subsequent activation. For information on your actual vehicle equipment, please refer to the sales documents or consult a qualified workshop. Volkswagen recommends using a Volkswagen dealership. The manual describes a passenger car and all data corresponds to the information available at the time of printing. However, due to ongoing development and improvement of the vehicle, there may be differences between your vehicle and the data in this manual. No discrepancy in data, illustrations, or descriptions will form the basis for any legal claim. Due to legal and technical requirements, the vehicle may be equipped with different variants of an owner's manual depending on the country. The printed manual describes the functions of the vehicle at the time of printing, but additions and changes may also be enclosed as a supplement. An alphabetical index and list of abbreviations that explains technical terms help you navigate and understand the printed manual. If you sell or lend the vehicle to someone else, ensure the printed documents are always in the vehicle. Volkswagen also recommends restoring the Infotainment system to its factory settings to delete all personal data. ****Vehicle Controls and Displays**** The vehicle's controls and displays are designed to provide information and warnings to the driver. The warning and indicator lamps can light up individually or in combination to indicate various functions, faults, or warnings. ****Important Safety Information**** Failing to observe illuminated warning lamps and text messages can lead to serious consequences, including a breakdown in traffic, accidents, injuries, and even death. Therefore, it is crucial to never ignore any illuminated warning lamps or text messages. ****Vehicle Features**** * Touch panels for interior and reading lights * Panoramic sunroof with tilting and sliding function * Sun blind in the glass roof * Buttons for information call, breakdown call, and emergency call ****Warning and Indicator Lamps**** The warning and indicator lamps can light up individually or in combination to indicate various functions, faults, or warnings. Some lamps may light up when the ignition is switched on and should go out after a while. ****Safety Reminder**** Never ignore any illuminated warning lamps or text messages. If you notice an illuminated lamp, stop the vehicle as soon as possible and when it is safe to do so. ****Critical Safety Messages**** * Do not drive if: + There's an issue with engine management system + 48-volt power supply or 12-volt power supply is faulty + Collision warning system is malfunctioning * In case of emergencies: + Take over steering immediately + Emergency Assist performs control intervention (adaptive or passive) * Do not drive if: + Gearbox overheated or faulty + Interventions by proactive occupant protection systems fail ****Fault Codes**** * Airbag or belt tensioner system issues * Central warning lamp is lit up * Electronic Stability Control (ESC) fault * ESC or Traction Control System (TCS) regulating issue * Anti-lock Braking System (ABS) fault * Low or high engine oil level * Faulty electronic parking brake * Travel Assist not available ****Other Issues**** * Water in diesel fuel * Vehicle lighting failure * Exterior drive light not working * Rear fog light stuck on * Rain/light sensor fault ****Error Messages**** 1. Ball coupling of towing bracket not locked: The ball coupling on the towing bracket is not secured. 2. Auxiliary heating and ventilation system not functioning: Try switching the auxiliary heating and ventilation system on and off, or reprogram the settings. 3. Invalid vehicle key recognized: Insert a valid vehicle key to unlock the car. 4. Rear Traffic Alert fault: Check if there's an issue with the exit warning system or the Rear Traffic Alert feature. 5. Drowsiness Monitor not available: The Drowsiness Monitor is restricted or unavailable. 6. Driver Attention Monitor not available: The Driver Attention Monitor is restricted or unavailable. ****Hazard Alerts**** 1. Traffic hazard ahead (e.g., accident, roadworks): Be cautious of potential hazards on the road. 2. Emergency vehicle on active call: Yield to emergency vehicles with their lights flashing. 3. Stationary car or breakdown ahead: Exercise caution when approaching a stationary vehicle. ****System Faults**** 1. Selective catalytic reduction system fault: Check if there's an issue with the Selective Catalytic Reduction (SCR) system. 2. AdBlue level low: Refill the AdBlue tank to avoid engine damage. 3. Engine won't start due to brake pedal depression: Release the brake pedal and try starting the engine again. ****System Activations**** 1. Auto Hold function active: The Auto Hold function is engaged; press the button to deactivate it. 2. Turn signal indicator lamp on: Use the turn signals to indicate your intentions. 3. Trailer turn signal indicator lamp on: If towing a trailer, use the turn signals with the trailer lights on. 4. Speed limiter switched on: Engage or disengage the speed limiter as needed. ****Lane Keeping and Adaptive Cruise Control**** 1. Lane Assist ready to intervene: The Lane Assist system is prepared to take control of steering; follow instructions for proper use. 2. Travel Assist active: Follow the guidelines for using the Travel Assist feature. 3. ACC regulating, no vehicle detected ahead: Switch the ACC on or off when there's no vehicle in front. 4. ACC regulating, vehicle detected ahead: Switch the ACC on or off when a vehicle is detected in front. ****Speed Regulation**** 1. Speed regulation due to speed limit (e.g., predictive speed limiter): Engage the predictive speed limiter to follow posted limits. 2. Speed regulation due to bend or roundabout: Engage the predictive cruise control feature for safer driving. 3. Speed regulation due to junction: Use the predictive cruise control feature when approaching intersections. ****General Information**** 1. Introduction to Lane Assist and Travel Assist: Follow guidelines for using these features safely. 2. Predictive speed limiter and cruise control in use: Follow instructions for proper usage. The vehicle's onboard computer system displays warning lights and messages when there is a malfunction or issue. The red central warning lamp flashes to indicate a serious problem, while the yellow lamp flashes for less severe issues. If multiple warnings appear, they will display in sequence until the problem is resolved. If you see a warning message on your dashboard, do not drive the vehicle! Check the fault and seek expert assistance immediately. Failure to address these issues could lead to damage to the vehicle or cause it to break down. The system also provides information about various procedures within the vehicle. If multiple warnings are displayed at once, they will appear in sequence until the faults are resolved. To access the Vehicle status menu, follow these steps: 1. Turn on the ignition. 2. If necessary, turn on the Infotainment system. 3. Tap the Vehicle function button. 4. Choose from options (depending on your vehicle's equipment). ****Menu Options**** To access and adjust various settings, follow these steps: 1. Open the desired menu item from the submenus. 2. Make any necessary changes to the setting. Some menu options may only be available depending on the vehicle equipment and conditions. ****System Settings**** If the 12-volt vehicle battery has been disconnected or discharged, system settings may have been changed or deleted. Check and correct these settings once the battery is fully charged. ****Infotainment System Use**** When using the Infotainment system: 1. Always drive with full attention and responsibility. 2. Adjust all settings only when the vehicle is stationary. 3. Switch individual functions on and off, and adjust settings in the Vehicle Settings menu. The displayed options may depend on the vehicle equipment and be available under certain conditions. ****Exit Menu**** To exit the Infotainment system: 1. Tap to hide the Exit menu manually. 2. Open the Exit menu again by switching on and off the ignition. You can select entries individually and arrange their order as needed. ****Vehicle Information**** To display vehicle information, such as the VIN or service interval: 1. Tap the Vehicle function button in the Infotainment system. 2. Select the Status function button and then tap Service to display the VIN. 3. To set the time and date manually, select the Time and Date menu option. Note: The automatic time function may not be available or be restricted depending on the equipment and country. The display will show various information, including driving and fuel consumption data. The secondary display area can show different types of data depending on the vehicle equipment level. The displayed data is based on average values over varying route sections. The memory will be deleted if the journey is interrupted for more than 2 hours or if maximum values (100 hours or 9,999.9 km) are exceeded. The driving and consumption values collected by the recorder can be displayed and stored. The memory is deleted when the tank is refilled. You can configure the display to show different types of data using the arrow buttons in the configuration menu. Tap the Status function button in the Vehicle menu, followed by the Distance covered and 0.0 buttons. Note: Using your phone while driving can cause accidents and serious injuries. Stay focused on the road! Always operate the instrument cluster and Infotainment system with full attention and responsibility. Adjust settings only when the vehicle is stationary. View Full Screen Owner's Manual (1 votes, average: 5.00 out of 5)Loading... ****2024 Volkswagen Passat**** Key details: * Specifications: + Engine: 2.0-liter turbocharged inline-4 + Horsepower: Approximately 174 hp + Transmission: 6-speed automatic + Drive: Front-wheel drive + Seating: 5 passengers * Features: + Elegant and understated Volkswagen design + Spacious and comfortable interior + Available advanced driver assistance features + Infotainment system with connectivity options * Dimensions: + Length: Approximately 193 inches (4.89 meters) + Width: Approximately 72 inches (1.82 meters) + Height: Approximately 58 inches (1.47 meters) * Fuel Economy: + City: Approximately 25-27 miles per gallon (9.4-10.6 liters per 100 kilometers) + Highway: Approximately 35-38 miles per gallon (6.7-7.8 liters per 100 kilometers) * Maintenance: + Oil and Filter Changes: Typically recommended every 8,000-12,000 kilometers (5,000-7,500 miles) + Tire Rotation: Typically recommended every 9,500-13,000 kilometers (6,000-8,000 miles) + Brake Pad Replacement: Depends on driving habits, but typically around every 40,000-80,000 kilometers (25,000-50,000 miles) + Battery Replacement: Typically every 3-5 years, depending on conditions * Common Issues: + Occasional electrical problems or minor interior trim wear

2012 vw passat owners manual pdf. Manual volkswagen passat. 2022 vw passat owner's manual pdf. Passat variant 2023 test. Nieuwe vw passat 2023.