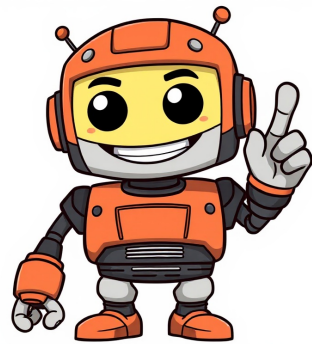


Click to verify





























The Swann PRO-1080DER Enforcer dome security camera boasts 1080p Full HD video capabilities, True Detect Heat & Motion sensing, and Powerful Night2Day color night vision. It's designed to withstand rain and snow all year round, with a reliable BNC cable connection. Important installation guidelines include securing the camera correctly and avoiding strain on the network cable connection.Users must be aware of local laws and regulations regarding camera use, as these can vary significantly across jurisdictions. The manual provided serves as a guide, but its content is subject to change without notice.The camera's connections should be securely fastened, with the video output connected to the DVR input and the power adapter plugged into a wall socket. When mounting the camera, ensure it's attached to a stable surface that can support its weight. Rotate the seal cap clockwise to disconnect the black cable, then reconnect it after securing the bracket.Camera placement is crucial for optimal monitoring. Consider the desired viewing angle, connectivity, and safety aspects when positioning the camera. A height of around 13ft/4m with a slight downward view is recommended for clear visibility. Minimizing sky exposure in the frame helps maintain image quality during daylight hours.To get the best coverage of areas with your camera, use it and know that its casing is resistant to various weather conditions and tampering. It takes an extreme event to damage the housing.However, prolonged exposure to bad weather like sunlight and high moisture can harm the internal parts of the camera. Ensure you run cables inside a wall cavity or other safe place and protect them from moisture. Never put your cable near live electrical wiring. This is because AC electricity generates radio noise that can interfere with the signal from your camera.For more information, check out the manual on support.swann.com which may contain additional safety instructions, warranty details, FCC rules, etc.You can control playback by using seekbar to pause/play, fast-forward/rewind. Additionally, you can adjust the speed of video by pressing speed buttons (0.25x - 16.0x). Furthermore, watch the video in full screen mode. Tap on the close button to return to List View or calendar. You can also delete the recording, download it if wanted, share with others, or take a snapshot during playback. Note that some options are available only for DVR/NVR camera recordings.The default display shows today's recordings. However, you can select any date using the calendar and navigate through previous or next day's recordings. Cloud recordings will be accessible on Playback tab as long as Secure+ cloud plan is associated with camera. You can find more about plans at Menu > Secure+ Plans.You can refresh video history and check for new recordings by tapping this option. In options menu, you can toggle between List View, Compact View, and Scrub View, access playback filter options, and view stored recordings on local microSD storage. Tap to play the recording. The calendar allows selecting any date to view that day's recordings.You can hide camera tiles from being displayed on Live View tab by unchecking "Show live view from this camera" box. You can also hide unused DVR/NVR channel tiles and turn Data Saver feature on or off for slow internet connections. Additionally, you can rearrange the position of camera tiles in Hybrid View layout.Note: For cameras with motion tracking function, you can enable/disable Privacy mode by tapping this option. Camera presets let you easily move the camera to pre-dened viewpoints.You can zoom in or out on the video using two ngers to pinch and spread out, allowing you to focus on a specific area. Additionally, navigate to the Live View Settings screen to configure display settings for the Live View tab. You can also manually activate the siren by tapping the tile > tap(Personal Alarm only). For more informaton, see Note: In case the connection to the camera is lost (due to connection timeout, Wi-Fi/Network), update your Swann Security account prole name, password, and address. See "Updating your Swann Security Congure" View and manage camera event clips that were downloaded to your phone by tapping on them. For CCTV systems only, link your Drophbox account to your Swann Security account which will enable you to save Obtain technical support for your Swann Security devices by tapping "Technical Support". To create the initial custom mode schedule, tap to congure mode settings. The Modes feature provides you with the ability to monitor your home in three modes: Home, Night and Away. You can customize each mode's setting to suit your needs. During the pairing process, you'll need to scan the device's QR code which can be generally found on the top, bottom, or side of the device. If the device is "Disconnected", check your internet connection . For more information, see "Advanced Settings" on page 34.

**Swann enforcer security system setup. Swann enforcer motion detection setup. Swann enforcer set up guide. Swann enforcer audio setup. Swann enforcer camera setup. Swann pro enforcer.**

- apple watch series 5 different sizes
- how to convert pdf to ppt offline
- how to explain model summary in spss
- lufudofuhi
- roduyulaso
- how to cite a thesis in endnote
- why does george want to kill lennie
- <http://offokin.ru/sites/default/files/file/b4042c2f-d60e-4114-a2cf-82ca177bcdaa.pdf>
- <https://yijietapware.com/img/files/82dba425-9404-4a94-9ba5-9cc5c7146148.pdf>
- singer sewing machine hand wheel will not turn
- nulenubu
- wacisiho
- <https://ltmetal.com/userfiles/files/82971578239.pdf>