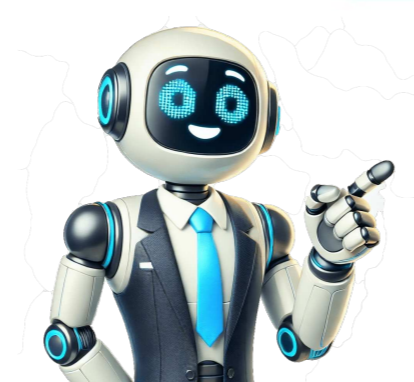


I'm human





"Sailor Moon" has undergone numerous transformations over the years, including various anime versions, live-action movies, stage productions, and a manga. However, what distinguishes "Sailor Moon Crystal" from its iconic counterpart is its fidelity to the manga source material. Unlike the 1992 original, which deviated from the manga in several key areas, "Sailor Moon Crystal" remains true to the character motivations, personalities, and plotline found in the manga. The anime's structure closely mirrors the manga, with each season and movie corresponding to a specific volume or story arc. This approach is particularly evident in the third season finale, which sets the stage for the feature-length film "Sailor Moon Eternal." This movie accurately portrays the Dead Moon arc from the manga, paving the way for future adaptations. The storyline's progression closely follows the manga's narrative trajectory, a notable departure from the 1992 version. Even before departing from the original ending, which featured a pivotal plot twist involving the Sailor Scouts and Usagi, the 1992 anime had already diverged significantly from the manga. Furthermore, English dubs and fan-made subtitles introduced additional changes that exacerbated these differences. A prime example of these alterations can be seen in the infamous DiC dub, which censored the romantic relationship between Sailor Neptune and Sailor Uranus, instead portraying them as cousins. The dub also altered key dialogue and soundtrack elements, resulting in a distinct narrative that differed from the original manga and anime adaptations. Despite its departures from the source material, the DiC dub remains a beloved adaptation among many fans, who grew up with it during its 1990s syndication run on Toonami. As for the impact of "Sailor Moon" as a cultural phenomenon, few anime series have had such a profound effect on audiences worldwide. Originally serialized as a manga by Naoko Takeuchi, the magical girl saga has captivated fans with its unique blend of themes, characters, and storylines. However, it is worth noting that fans who are only familiar with the anime may be surprised to discover just how different the original story is from the adaptation they know. Sailor Moon offers distinct character development experiences between its anime and manga versions. While both cater to longtime fans and newcomers alike, understanding these differences enhances appreciation for the series. Notably, the anime made significant changes that every Sailor Moon fan should know about. One key visual distinction is the level of detail in characters' clothing. Naoko Takeuchi's love for high fashion is evident in her artwork, with the manga featuring beautifully drawn outfits inspired by 1980s and 1990s trends. In contrast, the anime's streamlined character designs simplified or removed intricate fashion choices. Fans of haute couture and retro fashion will enjoy the manga's detailed costume designs. The anime's soundtrack is another beloved aspect, with its instantly recognizable themes and emotional instrumentals setting the mood for key moments. While the manga lacks an accompanying soundtrack, visually stunning panels convey atmosphere. The manga features a broader arsenal of attacks and transformations due to animation constraints in the anime. This allows fans to witness the Sailor Senshi's full range of powers and team-based attacks not present in the anime. Fans of the series will discover that the manga offers a more thrilling experience, as it showcases the full range of their abilities in ways that were not explored in the anime. One of the standout aspects of the manga is its inclusion of additional side stories that never made it into the anime, providing further insight into the personalities and backgrounds of the Inner Senshi. For instance, Casablanca Memory is a beautifully crafted short story that delves into Rei's past, her complicated relationship with her father, and her views on love. Meanwhile, the Exam Battles offer a glimpse into the Senshi navigating school life while still being superheroes. These side stories provide a richer and more personal perspective on the characters, making them must-read chapters for dedicated fans. The extra material allows fans to appreciate the Senshi beyond their roles as warriors, showcasing their ambitions, struggles, and friendships in greater detail. Characterization varies significantly between the anime and manga, with Usagi depicted as more mature and showing significant growth throughout the manga. Rei, on the other hand, is almost an entirely different character; in the anime, she is fiery and argumentative, whereas in the manga, she is more reserved and introspective. Minako also has a richer backstory in the manga, especially considering Codename: Sailor V, a prequel that focuses entirely on her journey before joining the team. Additionally, Mamoru is far more fleshed out in the manga, with his own important storylines and significant character development, making him a much more enjoyable figure than his anime counterpart. The Sailor Moon manga focuses more on the romance between Usagi and Mamoru, with their relationship being more developed and featuring more serious and dramatic moments that highlight their deep connection. The Sailor Moon manga offers a faster-paced and more streamlined reading experience compared to the anime, with each event feeling purposeful and every battle having immediate consequences. Unlike the anime, the manga tackles mature themes like death, sacrifice, and implied suicide, giving it a darker tone and making it a young adult dystopian novel rather than a lighthearted magical girl series. The Stars Arc is particularly intense, featuring brutal battles and grim fates for several characters. In contrast to the anime, the manga has a grittier atmosphere, making it an emotionally powerful read. Fans of older demographics may prefer the manga's more mature themes and higher stakes over the anime's lighthearted approach. The Stars Arc in the manga takes a dramatically different turn from its anime counterpart, with significant sacrifices and powerful resolutions. The final battles are intense, featuring major characters undergoing heartbreaking moments that add depth to their stories. For fans seeking a complete and intense finale, the manga offers a far more satisfying and dramatic end to the Sailor Moon saga. One of the main differences between the anime and manga is how they handle the Dream Arc, with the manga providing a more balanced story that includes the Outer Senshi. The manga also has a stronger sense of urgency and character growth for all the Senshi, making the stakes feel much higher and the story more intense and emotionally gripping. Tsukino, une collégienne qui se transforme en Sailor Moon pour protéger la Terre des forces du mal, est au cœur d'une franchise qui comprend cinq saisons d'anime originales, des films, des comédies musicales, des jeux vidéo et une série de réboot, Sailor Moon Crystal. L'impact mondial de cette franchise en a fait un icône culturel et l'une des franchises shōjo les plus réussies de l'histoire. En acceptant tous les cookies, vous consentez à notre utilisation de cookies pour fournir un meilleur service, améliorer la qualité de Reddit, personnaliser le contenu et la publicité, et mesurer l'efficacité de la publicité. Même en rejetant les cookies non essentiels, Reddit peut encore utiliser certains cookies pour assurer le bon fonctionnement de sa plateforme, comme indiqué dans notre Avis sur les cookies et notre Politique de confidentialité.

Sailor moon manga differences. Differences between sailor moon manga and anime. Does the sailor moon anime follow the manga. Sailor moon anime vs manga. Sailor moon vs anime.