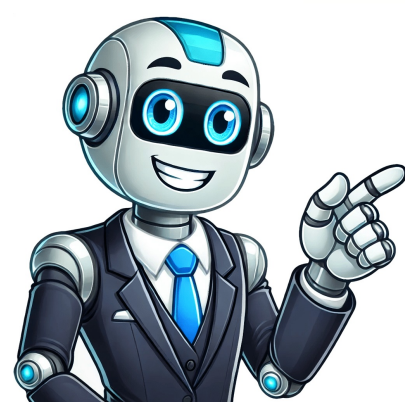


Click Here



Blood type home testing kit

EldonCard - en dansk fabrikant af tørre formatkort til blodgruppebestemmelse - har været i produktion og brug i over 40 år baseret på en opfindelse af den danske læge Knud Eldon. Disse kort er blevet anvendt til at fastslå individers blodgruppe inden for ABO-Rhesus (D) systemet samt sikre patient/donor blod kompatibiliteten. I dag er EldonCards baseret på speciel formulerede monoklonale antistoffer. Hvorfor skal jeg vide min blodtype? At vide sin egen blodtype kan hjælpe en forbedre sin egen sundhed og kunne eventuelt redde liv under nød situation af at få en blodtransfusion. EldonCard er det mest troværdige og præcise diagnostiske testkit til blodtyper af ABO- og Rhesus. Man kan finde ud af sin egen blodtype på kun minutter ved hjælp af EldonCard. EldonCard er meget tryk at anvende da det også er meget præcis og slette mange muligheder for menneskelig fejl under traditionel laboratorybaseret metoder hvor blodtypetest foregår med flydende reagens på en glasplade. Det efterlader et permanent arkiv - EldonCard - som kan inkluderes i patientjournal eller overdrages til patienten for personlig eftersyn. EldonCard er et produkt af højeste kvalitet, der også opfylder kravene efter ISO standard og CE mærkning i EU samt har fået godkendelse i USA samt registreret med relevante myndigheder i flere andre lande. EldonCard består af en særlig type plast, hvor tørre antistofformuleringer er placeret på. EldonCard er et tilfældigt, varmt og fleksibelt punkt-kare blodtypetest system. The presence of Anti-A and Anti-B antibodies reacting with A and B antigens in red blood cells causes this phenomenon. Each individual blood type kit tests for the Rh factor and red blood cell type, providing accurate results when used correctly. Although easy to use, home blood test kits have time-sensitive processes; it's essential to read documentation before using the lancet or wetting the card. This affordable home blood typing kit lets you determine your blood type from the comfort of your own home. Whether donating blood, following the Eat Right for Your Type diet, or simply curious, this easy-to-use test provides quick and reliable results. The EldonCard blood typing test kit uses the forward antibody method to quickly determine your ABO blood group (A, AB, B, or O) and rhesus factor (Rh negative or positive). This information is crucial in medical emergencies or disasters requiring immediate blood transfusion or replacement. Unfortunately, many people don't have this essential knowledge due to a lack of inquiry or the reluctance of healthcare professionals to share patient records. The EldonCard test kit provides your blood type and Rh factor within minutes without special equipment or training. By comparing coagulation results with a graphic chart, you can determine your correct blood grouping. This test is also suitable for educational purposes in classrooms and other settings. During routine prenatal care, women can receive a subcutaneous injection of Rh D Immune Globulin to prevent an immune cross-reaction that may harm the fetus. Pregnant women and those receiving blood transfusions should determine their blood type, especially the Rh factor. Blood typing is also used in paternity testing and genetic studies. The EldonCard Blood Typing Kit includes materials for one test procedure: Mylar package, alcohol prep pad, EldonStick devices, pipette, laminating sheet, automatic safety lancet device, and instruction manual. To interpret results, compare the test cells on the card to the color reference chart provided. The blood type and Rh factor are then determined by matching the test results with the chart. For example, if coagulation is seen in cells one and three, the blood type is A and the Rh factor is positive. The kit is available in various quantities: two, six, twelve, twenty-four, fifty, one hundred, two hundred fifty, five hundred, one thousand, or two thousand individually packaged test kits. Each kit contains a hermetically sealed EldonCard and required materials for completing one blood typing test procedure. The completed test card can be sealed with the laminating sheet to create a permanent record of blood type for personal identification, family histories, and medical purposes. Institutional Use Only: At-Home Blood Tests For laboratory and institutional use only, these tests are designed for healthcare professionals. #####Blood Typing Facts Refer to the Blood Typing Facts page for additional information on ABO-Rh testing. #####Bulk Packaging Order in bulk packs of 100 Eldoncard test cards with 400 individually sealed EldonSticks transfer devices, including instructions. Note: This item is a special order and has an approximate lead time of 5 days. #####Self-Administered Tests At-home blood tests allow individuals to monitor their health without visiting a healthcare provider or laboratory. These simple finger-prick tests send a small blood sample to a lab for analysis, similar to physician-ordered blood tests. Results are often delivered through an online platform or mobile app. #####Benefits and Limitations At-home blood tests offer convenience, speed, and affordability but have limitations. They should not replace comprehensive medical exams or in-person care. Some companies provide comprehensive panels with tests for various conditions, while others focus on specific areas like diabetes monitoring. #####Key Considerations Before using at-home blood tests, consider the following: - Results may take between 2-14 days to arrive. - Not all tests have been scientifically proven for accuracy and reliability. - These tests should be used in conjunction with traditional testing methods, not as a replacement. Consult with your doctor before using any at-home blood test. Home blood tests are designed to help monitor certain health conditions and provide insight into overall well-being. These tests can detect issues such as diabetes, cholesterol levels, thyroid function, infections, and more. Some common home blood tests include cholesterol panels, hemoglobin A1c testing for blood sugar levels, and hormone panels for various hormones. A healthcare professional will review the results to explain their meaning and any necessary follow-up actions. The accuracy of these tests is a topic of ongoing research. Pros of at-home blood tests include convenience, allowing individuals to collect and return samples on their own schedule, as well as potential cost savings compared to in-person visits. However, some drawbacks include the risk of false positives or negatives, limited diagnostic capabilities, and a lack of personal interaction with healthcare providers. Given article text here Looking at health through lifestyle factors can provide a better understanding of overall wellness, best done with medical expertise at a doctor's office. Potential issues arise from home blood tests requiring proper collection and shipping, according to Dr. Karcher, which may lead to incorrect results or retesting due to user error. The accuracy of these tests heavily depends on the quality of the kit and sample collection, as contamination, storage mistakes, or non-compliance can yield false or inaccurate readings. Following instructions carefully and returning the sample within the given timeframe is essential. Different blood tests screen for various markers and conditions, so it's best to choose a test based on symptoms and health history. This particular test detects common ABO blood groups but may not identify unusual sub-types requiring further investigation. It's also not suitable for determining blood type for transfusion purposes. A small, approximately 3-4 mm (1/8 inch) diameter dot is visible. Next, transfer the blood to an EldonStick, approaching it from beneath the finger. Avoid smearing the blood across the skin. Place the EldonStick with the blood drop into the first circle, ensuring the blood touches the existing water. Gently press the side of the EldonStick head against the card while stirring the mixture until the colored powder dissolves. Repeat this process for each of the four circles, using a new EldonStick for each and never transferring liquid between circles. Once complete, gently tilt the entire card vertically along its bottom edge and maintain this position for 10 seconds. The blood should slowly flow to the bottom of the circle. Repeat this procedure on the three other sides. After tilting, immediately read and record the results, referencing the table below for interpretation. For further information on blood and blood grouping, click here. Explore our full range of home health testing kits. For comprehensive UK instructions on using these tests, click here. For comprehensive USA instructions, click here.