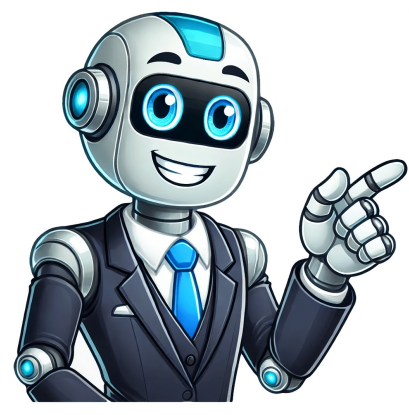


Continue



Will tramadol show up in a drug test

Imagine this: You're preparing for a new job, excited about the opportunity, and then you get an email—your employer requires a drug test. Panic sets in because you take tramadol for pain relief. Will it show up on the test? Could you fail? Many people face this fear, wondering if tramadol will cost them a job, legal trouble, or even their reputation. Let's uncover the truth about tramadol and drug testing so you can be prepared and worry-free. What Is Tramadol and How Does It Work? This medication, known as tramadol, functions as a prescription drug to reduce moderate and intense pain. Tramadol functions as an opioid medicine. Although experts classify it as weaker than morphine and oxycodone. The brain's processing of pain changes tramadol consumption. It lets people perform daily activities more effectively. Individuals with postoperative or injury conditions, along with arthritis patients, frequently take tramadol medication. The opioid nature of tramadol leads to worries about drug tests along with possible criminal implications. The answer isn't as simple as "yes" or "no." Standard drug tests, like the common 5-panel test used by many employers, do not detect tramadol. But there's a catch. Which Tests Can Detect Tramadol? 10-Panel and 12-Panel Drug Tests –These tests identify prescription opioids. It includes tramadol among the examined substances. Extended Opioid Panels – Extended opioid panels, which certain workplaces and law enforcement agencies administer, can assess synthetic opioids like tramadol. Pain Management Tests – Doctors who check patients in pain management programs. It administers tests to verify whether participants take tramadol medications correctly. Legal or Court-Ordered Tests – Certified testing by law includes tramadol screening most frequently. It happens in cases of child custody and probation. However basic testing methods usually fail to detect tramadol. The implementation of advanced testing procedures enables its detection. You need to know what type of test they will conduct since inquiries about your test provide peace of mind. How Long Does Tramadol Stay in Your System? The duration for which tramadol endures within your body depends on your metabolism rate. Plus your age level combined with your liver performance and hydration state. The duration for which tramadol detection exists in your body depends on several factors. It includes metabolic speed and age, together with a liver condition and water intake level. Here's how long it can be detected: Urine Test – Urine screening tests identify tramadol from 24 to 72 hours following consumption. Blood Test – The blood test can reveal tramadol usage throughout 12 to 24 hours after substance intake. Saliva Test – Saliva detection of tramadol remains possible for up to two days after using the drug. Hair Test – A hair test shows tramadol drug use patterns for up to 90 days post-ingestion. Different factors determine the detection times of tramadol, which depend on both dose and frequency of use. 4. Can Tramadol Cause a False Positive? False positives happen when a drug test mistakenly detects another substance as tramadol. While rare, some medications can cause issues, including: Antidepressants (like sertraline) Other opioids (such as codeine) Certain antibiotics (like rifampin) If you test positive and believe it's a mistake, you can request a confirmation test. These advanced tests use more precise methods to eliminate false positives. How to Clear Tramadol from Your System Faster? If you have a drug test coming up, you may wonder how to flush tramadol out of your system quickly. While there's no magic fix, these steps may help: Drink Plenty of Water – Staying hydrated helps your kidneys remove tramadol faster. Exercise – Moving your body can speed up your metabolism. Eat a Healthy Diet – Fruits, vegetables, and lean protein support liver function. Get Plenty of Rest – Good sleep helps your body process drugs more efficiently. Avoid Alcohol – Alcohol slows down tramadol elimination. However, detoxing takes time. If you have a test soon, be honest about your prescription. Legal & Employment Risks of Testing Positive for Tramadol Many employers conduct drug screenings, and testing positive for tramadol could cause problems, especially if you don't have a prescription. Can You Lose Your Job for Testing Positive? If you have a prescription: Employers cannot dismiss employees who take tramadol. The condition is according to their doctor-prescribed medicine. If you don't have a prescription: An unapproved tramadol test can generate job termination. Legal consequences for those without doctor approval. Certain jobs (pilots, drivers, healthcare workers, etc.): The medical industry maintains strict drug testing standards. It prohibits both prescribed tramadol consumption and any unregulated drug usage. Speak to your employer about tramadol use before any upcoming drug tests when it serves as your pain treatment method. Home Drug Testing for Tramadol Worried about a test? You can check for tramadol at home using over-the-counter drug test kits. Here's what to know: Pros: Quick results, affordable, private. Cons: Less accurate than lab tests, may not detect tramadol unless specified. If you need reliable results, consider a professional lab test. Conclusion Check the test type – A basic 5-panel test won't detect tramadol, but extended panels will. Know your body – Tramadol stays in urine for up to 3 days, but hair tests detect it for months. Take precautions – If you take tramadol legally, inform the testing center beforehand. Stay prepared – If you think you might test positive, request a second test or medical review. By understanding how tramadol affects drug tests, you can take control of your future—without unnecessary stress. FAQs Q1: Will tramadol show up on a regular drug test? No, a standard 5-panel drug test does not screen for tramadol. However, a 10-panel or 12-panel test might detect it. Q2: How long does tramadol stay in your urine? Urine analysis shows the presence of tramadol from one day to three days after somebody uses the drug. Q3: Can tramadol cause a false positive for opioids? The detection of false opioids in drug tests occurs rarely. Even though certain prescription medications could trigger such results. Spontaneous negative tests usually show incorrect results; thus, seek confirmation testing immediately. Q4: What happens if I test positive for tramadol at work? Establish your legal possession of tramadol through documentation that you must give to your employer. Your failure to produce proof of your medication could lead to workplace disciplinary procedures. Q5: How can I get tramadol out of my system faster? Drinking water, eating nourishing foods, and performing exercises can speed up the body's natural processing. Also avoiding alcohol can make it easier the process to control it. Now that you know the facts, you can approach any drug test with confidence. Stay informed, stay prepared, and stay stress-free! When first marketed, tramadol appeared to offer the exceptional pain-relieving benefits of more potent painkillers without spawning the unwanted byproducts of dependency and addiction. As a result, it became considered a safer alternative to narcotics and was widely accepted by the public. It was also easier to obtain and prescribed with greater prevalence on the global market. Prior to 1995, tramadol was massively over-prescribed and remained unregulated by the Food and Drug Administration (FDA). Tramadol's status was eventually changed due to rampant abuse and criminal diversion. Practices included illegal selling on the street, a growing presence on the web-based black market, and skyrocketing overdose rates. Consequently, as of 2014, tramadol was deemed a designated Schedule IV Controlled Substance by the Drug Enforcement Administration (DEA)—subject to severe criminal penalties for trafficking or unauthorized use. As of 2024, tramadol prescriptions cannot be refilled more than five times within a six-month period from the original date of the prescription. A new physician-authorized prescription is then required. As part of the monstrous U.S. opiate epidemic, tramadol continues to pose a significant danger to public health and safety. The following statistics underscore the severity and scope of the problem: According to the Centers for Disease Control and Prevention's (CDC) State Unintentional Drug Overdose Reporting System (SUDORS), approximately 187 people in the U.S. died each day in 2023 because of an opiate overdose. In 2022, the U.S. Congress Joint Economic Committee released an analysis that showed the opioid epidemic cost the U.S. nearly \$1.5 trillion in 2020, up 37% from 2017 (the last measurement). According to the latest 2022 data from the National Center for Health Statistics, drug overdoses are the leading cause of accidental death in the US. That same year, the FCC estimated approximately 81,606 people died because of opioid drug overdoses. According to the CDC, the age-adjusted rate of drug overdose deaths involving synthetic opioids increased by approximately 2,080% from 2013 to 2021 before slightly declining in recent years. Although well-tolerated by most people when prescribed for severe pain management, tramadol can cause serious side effects—especially when abused in tandem with other drugs or alcohol or used habitually in excessive doses. Common side effects of tramadol use may include, but are not limited to, the following: Itching. Incoordination. Hallucinations. Sleepiness/fatigue. Vomiting. Seizures/convulsions. Nausea. Dizziness. Diarrhea or constipation. Heartburn. Stomach pain. Anxiety and agitation. Accelerated heart rate. Coma/death. Tramadol has a half-life of approximately 6.3 hours, but it can take up to a day and a half for the substance to be eliminated from the body. Like other legal and illicit drugs, exact time frames are difficult to establish due to individual variables like age, weight, height, gender, overall physical and psychological health, etc. Tramadol can be detected in hair, blood, saliva, and urine. Hair tests are characterized by a detection window of 10 and 90 days, with samples being sent to a lab for testing. Industry experts consider hair testing a very accurate method, detecting tramadol at levels as low as 0.176mg. In contrast, saliva and blood tests don't offer an extended window for detection—in most cases, approximately 24 hours—and can't show exact levels of the drug in the system. It will simply register as a positive or negative result. It is important to remember that a negative outcome on a saliva or blood test doesn't mean that the drug is not present in the system. It simply means the amount is lower than the cut-off value. If a positive result is noted on a blood test, which indicates the drug was used within the previous three days (72 hours), another confirmatory test is required. In urine, tramadol can be detected for a period of approximately two to 40 hours, with the amount of time it takes to exit the body dependent on multiple factors. These include: Absorption — The time it takes for tramadol to enter the bloodstream and how much of the drug is absorbed. Factors like the type of tramadol, food intake, and digestive health can all impact absorption rates. Metabolism – The process of breaking down tramadol, primarily by liver enzymes. Liver conditions like hepatitis, cirrhosis, or fatty liver can slow metabolism. In older adults, reduced blood flow and medication can also extend tramadol's half-life. Distribution – How tramadol spreads through the body's tissues after absorption. People with higher body mass can process the drug more quickly, but those with more body fat tend to retain it longer since tramadol is known to bind to fat and build up over time. Elimination – How tramadol and its byproducts exit the body, mainly through the kidneys. Any kidney disorder can significantly slow this process. Additionally, taking the medication with food delays elimination, while taking it with fluids speeds up its elimination from the body through urine. Dosage — Higher doses take longer to metabolize and are more likely to bind to fat, making them detectable for a longer period. Type — Tramadol comes in immediate release (which acts quickly) and extended-release (which works over 24 hours). The extended-release version stays in the body longer. The amount of time the drug is taken is also important, as someone taking the medication over a short period will have less build-up in the body than someone taking it for longer periods. Other Medications — Other drugs, especially in cases of polysubstance abuse, can affect how tramadol is metabolized. It is important to be aware of possible interactions. It is also important to remember that everyone processes drugs differently. What may take one person days to clear tramadol from their system can take several hours for someone else. Again, tramadol will not appear on a standard pre-employment test—better known as a SAMHSA-5 panel drug test. However, it will appear on toxicology screenings designed specifically for detecting prescription drugs. Like other mind-altering substances, tramadol can be highly addictive when misused. What may start as occasional use can quickly spiral into full-blown addiction. When someone dependent on the drug tries to stop, they may suffer various tramadol withdrawal symptoms, fueling the cycle of dependence. Tramadol's addictive potential isn't limited to those with genetic susceptibility, a family history of substance abuse, or those who misuse it outside medical guidelines. Anyone can develop a dependence on tramadol and find themselves needing detox and rehab. If you or a loved one is struggling with tramadol addiction, don't wait. Reach out to our Florida rehab center today. There is no shame in asking for help. In the event of a tramadol overdose, call 911 immediately or seek addiction treatment at the nearest hospital emergency room (ER). For those suffering from tramadol addiction, please remember there are other alternative methods for managing pain without opiates. For further assistance and resources, please call Beach House Center for Recovery today and get back to living a clean and sober life. Learn more about the programs available at our detox center in Florida. Updated January 30, 2018 Mikki Says: Tue, October 29, 2013 I thought it was a non-narcotic pill but it gives me the same feeling as would Lortab or Codiene. REPLY REPORT Page:1 tramadol would not show up in a hair drug test. Also it would not show up in a urine rapid screening test. Most rapid screening test are calibrated for morphine. Morphine is excreted unmetabolized, and is also the major metabolic product of codeine and heroin. REPLY Was this helpful? 67 I took tramadol three days ago and have to take a urine drug test that gets sent to a lab will I test positive REPLY Was this helpful? 448 what panel will tramadol show up on have test at 100 2 today REPLY Was this helpful? 154 For the most part not many labs test for tramadol unless it is specifically asked for so it most likely won't show up on a hair drug test or urine drug test REPLY Was this helpful? 42 Can u put a little oxycodone into a synthetic urine bottle and get away with it if it gets sent to a lab after a 14 panel strip test? I need oxycodone to be in my system for my pain management appt. I took an 8 mg oxymorphone last night (Sunday) I have my Appt. at 3:30 on Wednesday. I have a very high metabolism. Tall and skinny. Should the oxymorphone be out of my system by then so I can just submit my urine that has oxycodone in it? REPLY Was this helpful? 41 So let me translate Gembo's post: " I have a prescription for Oxycodone but I am really just selling those pills that are prescribed to me to other people so I will test negative for what I am prescribed since I am selling all those to other addicts. Some of these oxycodone may end up in the hands of kids but HEY, I make \$30 A PILL selling these so what do I care where they go after me? I insufflated an Oxymorphone last night because this is my drug of choice that I buy with all the money I make selling oxycodone to other addicts. " REPLY Was this helpful? 178 I need a definite answer, will tramadol show up in urine test and if I have a script, does it have to be a recent one?? REPLY Was this helpful? 136 Hi Dory, I'm not a doctor but I will repeat what a doctor who did my drug test for a pre employment test told me two days ago. I asked why the tramadol did not show up on my 7 panel drug test. He replied "it will not show up because it is a synthetic drug and is NOT metabolized like opioids (oxy, codeine, perc8 Ect. He went on to say that they are looking for heroin mainly when they test for opioids. Also, the test I took was in Edmonton, Alberta & it was sent to a lab to test. I also take 300 mg per day but take nothing else . I also contacted the drug maker and asked them If it could show up on a drug test. They emailed me back with the information that said "3 in 10 people using tramadol will have a false positive urine test." Hope this helps! :-> REPLY Was this helpful? 31 So even though tramadol is now a controlled substance.....will it make you test positive if sent off for drug screen? REPLY Was this helpful? 53 @post #6, who are you to judge anyone. you dont know if he sold them. he might have just ran out. u are not god and have no right to talk about ppl like that. your screen name is a good one for u cause thats how u should feel about your self and the comments u make, and if he is selling them thats none of ur concern. is he trying to sell them to u? no! so mind ur own and find something to do with ur time. REPLY Was this helpful? 71 sorry this is not related to a response the inquirer was searching for... but #10..#5 sounds like a complete pill head and the post was a little hard to understand.. #6 was simply clarifying for us REPLY Was this helpful? 28 JAL, So even tho tramadol is now considered a controlled substance, tramadol will not show up on a UA? According to what the doctor told you? Thank u REPLY Was this helpful? 16 I have experimented taking a 12 panel drug test (ordered from Amazon) at various intervals after tramadol consumption. I can say that my tests show that tramadol 50 mg DOES show up as an opiate for 2-3 days after taking it. after about 4 days, it is clear. I understand people saying it's not technically and opiate and you have to test for it specifically, but all I can say is that for my home tests it definitely did show up positive for opiates. word to the wise. REPLY Was this helpful? 57 You cannot know if this person simply used more than prescribed. Tolerance builds and more becomes almost "necessary" for normality. REPLY Was this helpful? 14 No, not necessary for normality but increasing the dose becomes necessary to keep getting high. Been down that road and it sucks. Better to get help, get clean, stop that never ending cycle REPLY Was this helpful? 13 I've read and read and read these questions & answers on several different sites yet I still don't know FOR SURE if Tramadol will show up as an opiate on a urinalysis?? Does anyone know where I can find a TRUE answer??? I appreciate any help! REPLY Was this helpful? 35 Read my post #1 dated Oct 29, 2013. I've worked in the drug testing industry for 16+ years and there aren't any rapid screening urine tests for Tramadol. Some labs might be able to test for it but there is not much call for testing for tramadol. Most labs only test for the main opiates and the extended opiates of which tramadol is not one. The lab I partner with (Omega Labs) does not test for it in a hair drug test. REPLY Was this helpful? 37 Does anyone know if drug court UA testing tests for Tramadol? REPLY Was this helpful? 14 KLM, I'm not sure if it will where you live. I was told it is not metabolized like an opioid because it is synthetic. If you're unsure call the drug company and ask for more information. In Canada it is not a controlled substance. REPLY Was this helpful? 4 I have just taken two tramadol hydrochloride for extreme pain and have just tested posive for morphine on a five bar urine test the result being my eviction from a drug rehabilitation place I have even had an argument with the scientist who does the test! REPLY Was this helpful? 19 I have a urine test on Friday and I'm taking 3 tramadol a day. I have taken lortab as well (5-7 pills altogether). Haven't taken any since Monday. Will it show up in my urine this Friday? If so, does tramadol show up as an opiate in urine samples? Thanks. REPLY Was this helpful? 0 Re: curious (# 9) It most definitely will not show up as an opiate because it is not REPLY Was this helpful? 0 Re: Exposed (# 1) Tramadol DOES show up in a rapid urine test as I had one. Be very careful about the information you are giving people. REPLY Was this helpful? 1 Will tramadol and narco show up the same on a 14 panel drug test? REPLY Was this helpful? 0 Re: Jen (# 2) You're good, just don't take it the night before a test, as it could come up as a false positive. REPLY Was this helpful? 0 Albert, The detection time for opiates in a urine drug screen is only a couple of days so I doubt if it will show up. If the urine test is like a home dip test most of those don't even test for Tramadol. REPLY Was this helpful? 0 I have been seeing my pain management dr for over three years now and recently had an epidural for lower back pain. This month I took a few dosages of Tramadol and now I'm worried that it will show up in my urine screening. I see my dr this week and am running low on my Norco and the Tramadol seems to be an ok substitute to get me through. I live in Texas. Does anyone know if my screening will show Tramadol specifically? Thank you. REPLY Was this helpful? 0 Hey if tramadol 200mg red round pills are sent to a lab what will it come back as? I'm going out of my mind cuz I don't need to be riding with any opiate REPLY Was this helpful? 0 If you use 'scholar.google.com' you will find college course, peer reviewed answers. Can trust everything on it as it has been verified. REPLY Was this helpful? 0 Charlotte, did you get any type of printed report. I would love to see it. The lab I partner with does not test for tramadol so it would never show up. Did the test actually say there was tramadol in your hair?? REPLY Was this helpful? 0 Sort Thread by Most Recent