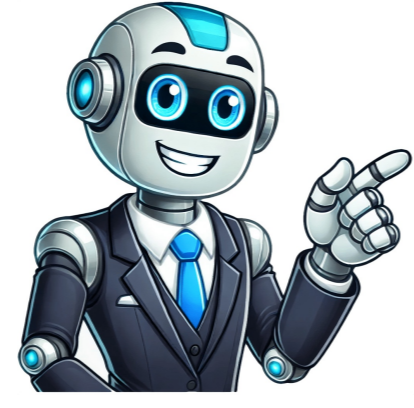


Continue





A suitable shelter for goats is essential for a successful goat farming business. Like other domestic animals, goats need a place to rest at night, which also provides security against harsh climates, predators, and sunlight. While keeping goats with other animals can work in small-scale production, commercial farms require a well-designed house with necessary facilities. A good shelter not only protects the goats from the elements but also promotes their health and prevents diseases. Proper ventilation is crucial to maintain clean air and prevent respiratory problems. The size, cleanliness, and social environment of the housing system affect goat health and productivity. Understanding goat behavior is vital to determine their housing needs. Goats are social animals that thrive in groups, so providing sufficient space for them to roam freely and interact with each other is essential. They also need shelter from extreme weather conditions like rain, wind, and heat. There are various types of goat houses, including those made over the ground or poles. The latter type keeps goats elevated, protecting them from dampness and floodwater. Bamboo or wood structures are commonly used for these houses, which offer ease of cleaning and reduced disease transmission. Concrete houses, while more expensive, provide excellent ventilation and predator protection. Both types can be constructed over the ground or poles, making maintenance easier. Proper housing is crucial to maintain the health and productivity of goats as they grow in size and weight. Goat Housing Requirements and Considerations Every adult goat needs about 0.75 meter \* 4.5 meter \* 4.8 meter housing space. Every billy goat needs 2.4 meter \* 1.8 meter housing space. It will be better, if you can keep the nursing and pregnant goats separately. When building house for your goats, always emphasis on the comfort of your goats. Ensure that, your goats are living happily inside their house, and the house is suitable enough to keep them free from adverse weather and all types of predators. Providing enough exercise space for goats in their housing is very important for their health and happiness. As you know, goats are active animals and need room to move and play. You can include structures like logs, rocks, or platforms in their exercise area. Doing so will encourages them to climb and explore, making it even more enjoyable for them. The area around the housing should also have proper drainage to prevent mud and puddles. Goat's housing requirements can vary depending on the season. And seasonal changes require special caring in goat housing to keep the goats comfortable and healthy. Building a goat house is relatively easy and simple, it is a great way to provide shelter for your goats. Suitable goat housing or shelter is crucial for a successful goat farming business, as it provides the necessary protection from harsh weather conditions, predators, and disease-carrying dampness. Goats require a secure environment to rest and thrive, much like other domestic animals. Every goat needs a certain amount of space to live properly, and it varies depending on their age and type. Baby goats require less space than adult goats, while pregnant goats need more space. It's also recommended to keep nursing and pregnant goats separate from the rest. The space required for each type of goat is as follows: - 0.3 square meters for baby goats - 1.5 square meters for adult goats - 1.9 square meters for pregnant goats - 2.8 square meters for billy goats Sheep don't need housing like goats do, but they do require a place to rest and shelter from the elements. There are different types of sheep housing: 1. Open sheep housing is used in areas with less rain, and it's made by surrounding a certain area with a fence without a roof. 2. Semi-open sheep housing has a small roof in one corner and straw floor. 3. Bound sheep housing is fully roofed, well-ventilated, and concrete floors. Sheep require different spaces depending on their age and type: - Big females: 0.95-1.7 square meters - Small females: 0.75-1.4 square meters - Males: 0.55-0.95 square meters - Baby sheep: 0.15-0.4 square meters Providing the right housing and space for your goats and sheep is essential for their health, productivity, and overall well-being. Portable goat shelters provide a practical solution for temporary housing and rotational grazing, promoting healthy land management and minimizing overgrazing. The key feature of these shelters is their lightweight and mobile design, often made from materials such as metal or wood, with wheels or skids for easy relocation. They offer adequate ventilation and weather protection to keep goats comfortable. This type of shelter also allows for continuous grazing and access to fresh pasture, reducing the impact on any single area of land and promoting healthier soils and plant life. It is ideal for small farms, homesteaders, or those practicing sustainable farming methods. The A-frame design is popular due to its simplicity and effectiveness in sheltering goats from the elements. The benefits of a portable goat shelter include its affordability, ease of construction, and minimal maintenance requirements. It also provides adequate space for a small herd of goats. For larger operations, a high-roof barn design offers ample space for vertical movement, which is particularly beneficial for taller goat breeds. This type of structure also reduces the risk of respiratory issues in goats due to improved ventilation. Eco-friendly goat barns prioritize sustainable building practices and renewable resources. These structures are constructed using recycled or sustainable materials and incorporate renewable energy sources like solar panels for electricity. They often utilize natural insulation methods, which can save on heating and cooling costs, and enhance the overall aesthetic of the farm. Goat farmers looking to maximize space while providing their goats with a stimulating environment can benefit from vertical goat housing designs. These structures incorporate multiple levels connected by ramps or steps, allowing goats to climb and play. Key features include enclosed areas for shelter combined with open platforms for play, as well as customization options such as toys, scratching posts, and bedding areas. This type of design keeps goats active and engaged, reducing boredom and associated behavioral issues, while making efficient use of limited space, ideal for urban settings or small properties. Goat housing also provides ample shelter and social interaction opportunities among goats, suiting urban goat farming or those with limited land who want to provide a stimulating environment for their goats. Investing in innovative goat housing designs can significantly enhance the health, well-being, and productivity of your goats. By choosing the right housing solution, you can ensure their happiness and productivity while promoting sustainable farming practices. Goat Housing Options: A Guide for Farmers Most common type of goat house is one made over pole. The floor height is about 1 to 1.5 meters above the ground. This design keeps goats dry and clean, reducing the risk of diseases. Concrete houses are fully made with concrete and can be more expensive but offer several advantages such as easy cleaning and predator protection. The amount of space required for goats increases with their body size and weight. A general rule of thumb is to provide 2.5 square meters per goat for small breeds, 4.8 square meters per adult goat, and 1.8 square meters per billy goat. It's essential to ensure that each goat has enough space for proper growth and production. Types of houses for sheep farming are fully roofed, ensuring proper management of air and light movement. The floor can be either fully concrete or slightly concrete. This type of housing is effective in sheep farming as sheep graze during the day and rest at night within the house. Moreover, it provides a safe haven from rain, storms, and adverse weather. The required space for sheep varies based on the age and type of sheep. The chart below outlines the necessary space requirements: - Big Female (Without Baby): 68-90 Kg - Entresol Floor: 0.95-1.1 Squire Meters - Straw Floor: 1.2-1.4 Squire Meters - Big Female (With Baby): 68-90 Kg - Entresol Floor: 1.2-1.7 Squire Meters - Straw Floor: 1.4-1.85 Squire Meters - Small Female (Without Baby): 45-68 Kg - Entresol Floor: 0.75-0.95 Squire Meters - Straw Floor: 1.0-1.3 Squire Meters - Small Female (With Baby): 45-68 Kg - Entresol Floor: 1.0-1.4 Squire Meters - Straw Floor: 1.3-1.75 Squire Meters - Male Sheep: 32 Kg - Entresol Floor: 0.55-0.75 Squire Meters - Straw Floor: 0.75-0.95 Squire Meters - Baby Sheep (6 weeks): 0.4 Squire Meter - Baby Sheep (2 weeks): 0.15 Squire Meter

What kind of housing do goats need. Types of goat housing. Goat different types. Goat housing. Types of goats.