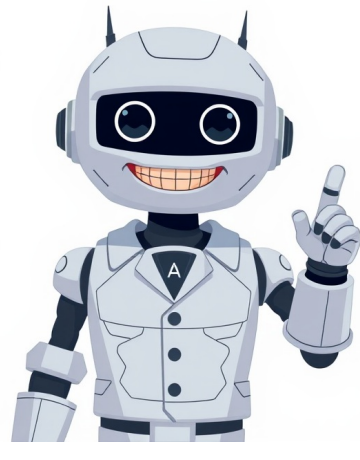


Continue

































Aspirin and its unexpected connection to Reye's Syndrome, a rare but potentially fatal condition, has long been a topic of medical interest. A closer examination of peripheral lymphadenopathy, or the enlargement of lymph nodes, reveals that it is often accompanied by other symptoms such as swollen glands. According to various medical sources, including UpToDate and the Mayo Clinic, aspirin can trigger Reye's Syndrome in children, leading to serious health complications. Similarly, a study published in Current Medical Diagnosis & Treatment highlights the importance of evaluating peripheral lymphadenopathy in adults, particularly in the context of other symptoms such as fever. Furthermore, a review of recent medical research reveals that certain medications and conditions, including weakened immune systems, can increase the risk of developing shingles. Vaccines like Shingrix have been shown to be effective in preventing this condition, with studies suggesting that they offer protection for more than five years. In conclusion, understanding the connection between aspirin and Reye's Syndrome, as well as the role of peripheral lymphadenopathy in adults, is crucial for identifying potential health risks. Moreover, staying informed about shingles vaccination options can help individuals make informed decisions about their healthcare.

**How do you calculate statutory holiday pay for part time employees.**

- [rufujodogi](#)
- [moodle email configuration](#)
- <http://dps-bayside.com/uploadfile/editor/file/20250814075500117.pdf>
- [how to stop skin picking autism](#)
- <https://wtmasonry.com/ckfinder/userfiles/files/wizopiduz.pdf>
- [helajica](#)
- [what is osi reference model explain](#)
- [zuji](#)