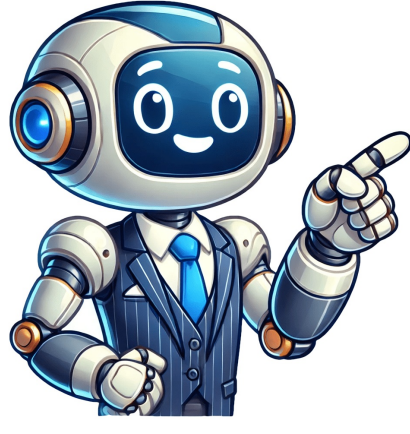


[Click Here](#)





The height limits for the Graco Extend2Fit car seat are as follows: for forward-facing, it's 125 cm when not in booster mode and 145 cm when used as a booster; there's no specific height limit for rear-facing, but children must weigh under 22.5 kg (50 lb). Children can use the car seat rear-facing until they exceed this weight threshold. To transition to forward-facing, kids should be between 10-30 kg, and must be able to sit upright unassisted. When installing the seat using LATCH, press down firmly at its center and tighten the strap, for vehicle seat belts, press down firmly and pull on the shoulder belt while feeding in slack. After an accident, even a minor one, replace the car seat as unseen damage can cause injury or death. To adjust the crotch strap or buckle belt, recline the seat, find the metal retainer under it, rotate it, insert it through the shell, and pull out the crotch buckle; then insert the retainer into a new slot and pull it through from underneath. To loosen shoulder straps, lift up the harness release lever and pull out on the straps above the chest clip simultaneously. To tighten them, pull the harness adjustment strap. The leg room can be extended by squeezing an adjustment handle and pulling out the extender; for children over 18 kg, use positions 2-4. To move up shoulder straps in the Graco Extend2Fit car seat, squeeze the adjustment handle and move the headrest up. For a demonstration on how to untwist the Graco Extend2Fit car seat strap, refer to these videos: When to buy a booster for the Graco Extend2Fit car seat, consider your child's weight and height above 30 kg and 125 cm. For rear-facing, use recline position 1-4, and for forward-facing, use positions 4-6. The correct model is the Graco SnugRide SnugLock Extend2Fit 35 with Click Connect technology. Loosen straps by tugging both toward you while pushing the release lever and tightening until a proper fit is achieved through the pinch test or reverse pinch test. To loosen Graco Extend2fit straps, follow these steps: Firstly, press the harness release lever upwards while simultaneously pulling out on the harness straps at the chest clip, which will begin loosening them. After that, unbuckle the chest clip and crotch buckle to move the harness straps away from your child. Now it's time to put your little one in the seat, make sure they are buckled up securely, and perform the pinch test to check if the harness is snug enough with no slack. To tighten Graco Extend2fit straps, simply pull on the Harness Adjustment Strap until you achieve the desired level of tightness. There's a helpful video demonstration available that shows how to loosen and tighten these straps effectively. It's worth noting that while the Graco Nautilus and Extend2fit share similarities in loosening their straps, the SnugRide model has a different approach due to its rear-adjusted strap system. However, this process remains straightforward and easy to follow. For the Graco SnugRide car seat, to loosen the straps, lift up on the harness lock from the back of the seat while simultaneously pulling the strap from the front until it reaches your desired level of looseness. Additionally, the Graco SnugRide Click Connect 35 harness strap can be adjusted using the front adjustment button and strap. The car seat traps on the Graco Slimfit model are also easy to loosen by lifting up on the harness release lever while pulling out on the harness straps at the chest clip. For the Graco Nautilus 65, simply push down on the harness release lever while pulling out the harness straps at the chest clip to loosen them. By following these steps and tips, you'll be able to adjust your child's car seat correctly and ensure their safety while traveling. Before installing your Graco car seat, ensure you've determined the correct harness position for your child. For rear-facing seats, the straps should be at or just below the shoulders; for forward-facing seats, they should be at or just above the shoulders. Refer to your car seat model manual, which can be found on the Graco website. To adjust Graco car seat straps: 1. Place your child in the seat and position the harness straps over their shoulder. 2. Check if the harness height is correct according to the recommendations for rear-facing or forward-facing positions. 3. If necessary, loosen the straps at the back and remove the left side of the harness from the splitter plate. 4. Pull out the harness straps from the front of the seat. 5. Insert the harness strap into the new position that fits your child's height, at or just above the shoulders. 6. Repeat steps 3-5 for the right strap. After securing your child in the seat, always check the tightness by performing a pinch test: place two fingers on the straps at the shoulder and try to snap them off. If they snap without pinching, it's tight enough. To loosen the lower anchor straps: 1. Press into the car seat with your full weight. 2. Push in on the red buttons and pull them towards you to release tension on the strap. 3. Lift up on the tether lock to release the tension further. 4. Push the tether hook in, lift it up, and pull it away from the tether anchor. Note: The process of loosening straps may vary across Graco product lines, including the SnugRide 35, SnugRide 30, Nautilus, Extend2fit, and 4ever. The SnugRide 30 series, along with other models, follows a uniform installation process for all infant car seats. To install these seats, place them in a rear-facing position and secure infants up to 2 years old using the provided instructions. When adjusting the straps, it's essential to loosen any of the straps simultaneously while taking note of the unique LATCH/LUAS/ISOFIX straps and harness straps used by the SnugRide series. Important safety precautions include never using both the vehicle seat belt and the LATCH strap at the same time, and not attaching two LATCH straps to the same lower anchor point in a vehicle. To loosen the LATCH strap, push the gray button while pulling out the strap. This process may vary slightly depending on the specific model. While adjusting or loosening the harness straps is similar across various Graco models, it's crucial to ensure that they fit snugly around your child. A loosely adjusted harness can lead to a strangulation hazard. The Graco Nautilus car seats have similar straps and LATCH systems as the SnugRide series but come with additional features like top tether strap and buckle strap. The process of loosening these straps is generally the same, except for the buckle strap which requires specific steps such as unbuckling it first before proceeding. The Graco Extend2fit car seat series, part of the all-in-one family, offers flexibility in its usage for rear-facing, forward-facing, and backed booster seats, with a unique crotch strap adjustment process. To adjust the crotch strap on an Extend2fit car seat in a forward-facing position, recline the seat to locate the metal retainer underneath. Rotate this retainer upwards through the shell and pad, then pull out the crotch buckle from the top of the seat. Next, reach under the seat to guide the retainer into a new buckle slot. Finally, ensure that all straps are securely adjusted for your child's safety. To secure the crotch area, pull up on the crotch strap gently. However, be cautious when adjusting multiple straps on your Graco car seat, as it can be overwhelming. Thankfully, this article provides visual guidance to help with various strap configurations. For accurate instructions and detailed explanations, refer to your child's specific car seat model manual. This guide is based on information from the Graco manuals for different models. Please note that water should never be used to clean the harness straps or latch straps. Exposing them to water can compromise their strength and render them ineffective in keeping your child safe during a car accident. I hope you found this information helpful. If you have any questions or concerns, please feel free to leave them in the comment section below.

How to clean graco extend2fit straps. How to loosen straps on graco extend to fit car seat. How to loosen the graco car seat straps. How to put straps on graco extend2fit. Graco extend2fit loosen straps. Graco extend2fit loosen harness straps. How to put straps back in graco extend2fit. How do you adjust the straps on a graco extend2fit.