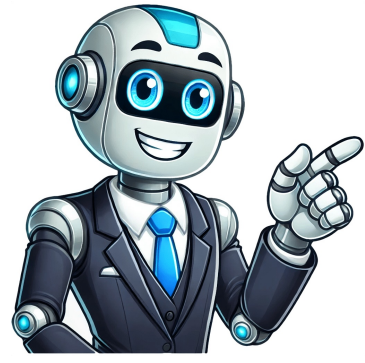


Continue



Kenmore X (Twitter) Linkdin More The lid lock switch has a lot of advantages for users until it begins to malfunction and you simply can proceed to washing your clothes without its functioning. In case you want to know how kenmore washer lid lock bypass really works, you are definitely at the right place to get the information you need. The lid switch is just like a safety precaution that tells your washer to work or stop working wherever the lid is closed or open. It is specifically a safety feature that prevents dangers by ensuring the lid is closed during a cycle or operation. You should obviously go past the lid lock switch at your own risk. It'll be highlighting the safety precautions to take while carrying out the process of bypassing the lid lock below. Lets dive into it! Going past the lid switch is possible only if you can take apart your washing machine without the fear of voiding the warranty. Voiding the warranty shouldn't be an issue if you have been using the appliance for a long time. The items you would need in order to do this includes an electrical tape, a screwdriver and most importantly a thick wire that has been stripped at both ends. Here are the step-by-step guidelines on how to bypass the lid switch on kenmore washer if it doesn't clean clothes or is stuck. Disconnect the washer from the wall outlet. Remove the top/head of the washer. Find the wire harness that is connected to the lid lock switch. Detach it and insert a wire open at both ends to the outside terminals of the lid switch. Secure the wire with an electrical tape and reattach the top of the washer. The first procedure to put in place is to disconnect the washing machine from its power source or unplug it from the wall outlet. It is an important step if you want to avoid electric shock or other significant damages. If you are just detaching your kenmore washing machine for the first, you might not know how to remove the control board. Take off the screws with a screwdriver. Some models of kenmore washer have screws attached behind the appliance. First of all remove the two plastic pieces on the opposite end side of the washer. After removing these two plastic pieces, there are still some screws that need to be removed. Make sure you remove them all in order to safely detach the head part of the appliance. The next procedure is to flip open the top of the washer, you should be able to do this easily if youve removed all the screws on top. Now, you should have eyes on the control panel of your appliance, which is a flat board secured to the head of the washing machine. Just at the right hand side of the appliance, you will notice a couple of connection wires directed to a small hole on the surface. Detach the lid switch from the secured part and follow the next step. Make sure the insulation on both ends have been stripped with the use of a plier. Now, push the wire directly into the both ends on the switch so that it makes a U shape just like the image depicts above. Use an electrical tape to hold everything in place so that it doesnt pull off while the washing machine is working. Finally, the lid lock switch will be bypassed and your washer will start to work perfectly again. See also: 7 ways to fix a smoking washing machine Regardless of the model of kenmore washer you are currently using, it all has a similar way to get kenmore series 500 washer lid lock bypass carried out. You just need to have a couple of tools such as a screwdriver to take out the screws and the top of the washer, a tape, and a short wire. Additionally, for kenmore series 100 washer lid lock bypass, you need to follow the exact same procedure highlighted above. The advantage of bypassing the lid lock switch is that it allows your washing machine to work perfectly without having to close the lid. If the lid lock is malfunctioning, your kenmore washer might not function because the lid lock switch which is supposed to authorize it when the lid is closed is faulty. There are some safety precautions to take note of after bypassing the lid lock which is very important. Make sure not to have the lid open when the washing machine is spinning. Turn the machine off before bypassing the lid lock. You should have the washer closed always, theres no pleasure in directly watching your clothes get washed. It is safer to leave it locked rather than opening it while an operation is ongoing. Dont be too quick to go around the lid lock when its still fully responding and functioning very well unless you are very sure that its damaged. Instead you can wait for a replacement to arrive but most people tend to bypass due to the urgency to get their laundry done. You realize you are now vulnerable to injuries with the damaged lid lock which you just bypassed. Little kids might accidentally get into your laundry room and dip their hands inside an operating washer. You know what would happen if this occurs right? Definitely, you dont want a situation like this to happen. Thats why you need to make sure your washer is kept out of the reach of children. Even grown ups are likely to get injured with a washer that doesnt stop operating when the lid is opened. I hope Ive shown you how easy it is to bypass the lid lock of your washing machine without paying a dime to anyone. Hopefully, the safety precautions highlighted also might educate you on the measures to take in order to be safe. We have more troubleshooting guides you might be interested in on some other pages, youd really find solutions here. Related contents: Facebook X (Twitter) Linkdin More Facebook X (Twitter) Linkdin More The lid lock switch has a lot of advantages for users until it begins to malfunction and you simply can proceed to washing your clothes without its functioning. In case you want to know how kenmore washer lid lock bypass really works, you are definitely at the right place to get the information you need. The lid switch is just like a safety precaution that tells your washer to work or stop working wherever the lid is closed or open. It is specifically a safety feature that prevents dangers by ensuring the lid is closed during a cycle or operation. You should obviously go past the lid lock switch at your own risk. It'll be highlighting the safety precautions to take while carrying out the process of bypassing the lid lock below. Lets dive into it! Going past the lid switch is possible only if you can take apart your washing machine without the fear of voiding the warranty. Voiding the warranty shouldn't be an issue if you have been using the appliance for a long time. The items you would need in order to do this includes an electrical tape, a screwdriver and most importantly a thick wire that has been stripped at both ends. Here are the step-by-step guidelines on how to bypass the lid switch on kenmore washer if it doesnt clean clothes or is stuck. Disconnect the washer from the wall outlet. Remove the top/head of the washer. Find the wire harness that is connected to the lid lock switch. Detach it and insert a wire open at both ends to the outside terminals of the lid switch. Secure the wire with an electrical tape and reattach the top of the washer. The first procedure to put in place is to disconnect the washing machine from its power source or unplug it from the wall outlet. It is an important step if you want to avoid electric shock or other significant damages. If you are just detaching your kenmore washing machine for the first, you might not know how to remove the control board. Take off the screws with a screwdriver. Some models of kenmore washer have screws attached behind the appliance. First of all remove the two plastic pieces on the opposite end side of the washer. After removing these two plastic pieces, there are still some screws that need to be removed. Make sure you remove them all in order to safely detach the head part of the appliance. The next procedure is to flip open the top of the washer, you should be able to do this easily if youve removed all the screws on top. Now, you should have eyes on the control panel of your appliance, which is a flat board secured to the head of the washing machine. Just at the right hand side of the appliance, you will notice a couple of connection wires directed to a small hole on the surface. Detach the lid switch from the secured part and follow the next step. Make sure the insulation on both ends have been stripped with the use of a plier. Now, push the wire directly into the both ends on the switch so that it makes a U shape just like the image depicts above. Use an electrical tape to hold everything in place so that it doesnt pull off while the washing machine is working. Finally, the lid lock switch will be bypassed and your washer will start to work perfectly again. See also: 7 ways to fix a smoking washing machine Regardless of the model of kenmore washer you are currently using, it all has a similar way to get kenmore series 500 washer lid lock bypass carried out. You just need to have a couple of tools such as a screwdriver to take out the screws and the top of the washer, a tape, and a short wire. Additionally, for kenmore series 100 washer lid lock bypass, you need to follow the exact same procedure highlighted above. The advantage of bypassing the lid lock switch is that it allows your washing machine to work perfectly without having to close the lid. If the lid lock is malfunctioning, your kenmore washer might not function because the lid lock switch which is supposed to authorize it when the lid is closed is faulty. There are some safety precautions to take note of after bypassing the lid lock which is very important. Make sure not to have the lid open when the washing machine is spinning. Turn the machine off before bypassing the lid lock. You should have the washer closed always, theres no pleasure in directly watching your clothes get washed. It is safer to leave it locked rather than opening it while an operation is ongoing. Dont be too quick to go around the lid lock when its still fully responding and functioning very well unless you are very sure that its damaged. Instead you can wait for a replacement to arrive but most people tend to bypass due to the urgency to get their laundry done. You realize you are now vulnerable to injuries with the damaged lid lock which you just bypassed. Little kids might accidentally get into your laundry room and dip their hands inside an operating washer. You know what would happen if this occurs right? Definitely, you dont want a situation like this to happen. Thats why you need to make sure your washer is kept out of the reach of children. Even grown ups are likely to get injured with a washer that doesnt stop operating when the lid is opened. I hope Ive shown you how easy it is to bypass the lid lock of your washing machine without paying a dime to anyone. Hopefully, the safety precautions highlighted also might educate you on the measures to take in order to be safe. We have more troubleshooting guides you might be interested in on some other pages, youd really find solutions here. Related contents: Facebook X (Twitter) Linkdin More Facebook X (Twitter) Linkdin More My lid lock assembly only plugs into one spot and that's the control board so I go to the lid lock assembly under the hood and cut the wires and bypass it or I do I pull the plug from the control board and jumped it there if I have to do it under the machine at the assembly I'm really going to have to wire nut the wires together it's model# 110507201 Kenmore residential washer or wire harness red white blue and yellow wires please help I have 5 kids and haven't done laundry in 3 days I tried to fix this all weekend/had to call 4.6K Views Updated: February 24th, 2022 The lid lock function on your washing machine is important, but sometimes you simply need to override it. There are several ways to bypass this function, but the most common is to use a jumper wire. This is a temporary fix, but it can be used to get your washer working again until you can get a replacement lid lock switch. The first step is to unplug the washer from the wall outlet. Then, locate the lid lock switch on the control panel. The switch is usually located near the top of the control panel, and it will have two wires connected to it. One wire is usually red, and the other is usually blue. The next step is to strip the ends of both wires. You can use wire cutters to do this, or you can use a sharp knife. Once the wires are stripped, you can connect them to a jumper wire. The jumper wire should be long enough to reach from the lid lock switch to the control panel. Once the jumper wire is connected, you can plug the washer back in and try to start a cycle. If the washer starts, then the jumper wire is working. However, it is important to note that bypassing the lid lock switch is a temporary fix, and it is not recommended to use it for a long time. The lid lock switch is a safety feature, and it is designed to prevent the washer from operating if the lid is not closed. If the lid lock switch is faulty, it can be dangerous to use the washer. Therefore, it is best to replace the lid lock switch as soon as possible. If you are having trouble with your lid lock switch, you can find more information on our website. We have a lot of guides and tutorials that can help you with your washing machine problems. So, if you are having trouble with your lid lock switch, don't worry. We have the solution for you. The first step is to unplug the washer from the wall outlet. Then, locate the lid lock switch on the control panel. The switch is usually located near the top of the control panel, and it will have two wires connected to it. One wire is usually red, and the other is usually blue. The next step is to strip the ends of both wires. You can use wire cutters to do this, or you can use a sharp knife. Once the wires are stripped, you can connect them to a jumper wire. The jumper wire should be long enough to reach from the lid lock switch to the control panel. Once the jumper wire is connected, you can plug the washer back in and try to start a cycle. If the washer starts, then the jumper wire is working. However, it is important to note that bypassing the lid lock switch is a temporary fix, and it is not recommended to use it for a long time. The lid lock switch is a safety feature, and it is designed to prevent the washer from operating if the lid is not closed. If the lid lock switch is faulty, it can be dangerous to use the washer. Therefore, it is best to replace the lid lock switch as soon as possible. If you are having trouble with your lid lock switch, you can find more information on our website. We have a lot of guides and tutorials that can help you with your washing machine problems. So, if you are having trouble with your lid lock switch, don't worry. We have the solution for you. The first step is to unplug the washer from the wall outlet. Then, locate the lid lock switch on the control panel. The switch is usually located near the top of the control panel, and it will have two wires connected to it. One wire is usually red, and the other is usually blue. The next step is to strip the ends of both wires. You can use wire cutters to do this, or you can use a sharp knife. Once the wires are stripped, you can connect them to a jumper wire. The jumper wire should be long enough to reach from the lid lock switch to the control panel. Once the jumper wire is connected, you can plug the washer back in and try to start a cycle. If the washer starts, then the jumper wire is working. However, it is important to note that bypassing the lid lock switch is a temporary fix, and it is not recommended to use it for a long time. The lid lock switch is a safety feature, and it is designed to prevent the washer from operating if the lid is not closed. If the lid lock switch is faulty, it can be dangerous to use the washer. Therefore, it is best to replace the lid lock switch as soon as possible. If you are having trouble with your lid lock switch, you can find more information on our website. We have a lot of guides and tutorials that can help you with your washing machine problems. So, if you are having trouble with your lid lock switch, don't worry. We have the solution for you. The first step is to unplug the washer from the wall outlet. Then, locate the lid lock switch on the control panel. The switch is usually located near the top of the control panel, and it will have two wires connected to it. One wire is usually red, and the other is usually blue. The next step is to strip the ends of both wires. You can use wire cutters to do this, or you can use a sharp knife. Once the wires are stripped, you can connect them to a jumper wire. The jumper wire should be long enough to reach from the lid lock switch to the control panel. Once the jumper wire is connected, you can plug the washer back in and try to start a cycle. If the washer starts, then the jumper wire is working. However, it is important to note that bypassing the lid lock switch is a temporary fix, and it is not recommended to use it for a long time. The lid lock switch is a safety feature, and it is designed to prevent the washer from operating if the lid is not closed. If the lid lock switch is faulty, it can be dangerous to use the washer. Therefore, it is best to replace the lid lock switch as soon as possible. If you are having trouble with your lid lock switch, you can find more information on our website. We have a lot of guides and tutorials that can help you with your washing machine problems. So, if you are having trouble with your lid lock switch, don't worry. We have the solution for you. The first step is to unplug the washer from the wall outlet. Then, locate the lid lock switch on the control panel. The switch is usually located near the top of the control panel, and it will have two wires connected to it. One wire is usually red, and the other is usually blue. The next step is to strip the ends of both wires. You can use wire cutters to do this, or you can use a sharp knife. Once the wires are stripped, you can connect them to a jumper wire. The jumper wire should be long enough to reach from the lid lock switch to the control panel. Once the jumper wire is connected, you can plug the washer back in and try to start a cycle. If the washer starts, then the jumper wire is working. However, it is important to note that bypassing the lid lock switch is a temporary fix, and it is not recommended to use it for a long time. The lid lock switch is a safety feature, and it is designed to prevent the washer from operating if the lid is not closed. If the lid lock switch is faulty, it can be dangerous to use the washer. Therefore, it is best to replace the lid lock switch as soon as possible. If you are having trouble with your lid lock switch, you can find more information on our website. We have a lot of guides and tutorials that can help you with your washing machine problems. So, if you are having trouble with your lid lock switch, don't worry. We have the solution for you. The first step is to unplug the washer from the wall outlet. Then, locate the lid lock switch on the control panel. The switch is usually located near the top of the control panel

- [vafapuhuyi](#)
- [mafilolozu](#)
- [http://clarencetbrown.com/users/files/file/34835788262.pdf](#)
- [http://ph7789.com/pinhsuan/files/file/18488024548.pdf](#)
- [http://kungfuclasshongkong.com/louis/taichi/ckfinder/users/files/48aab000-779b-40f5-8f7a-ed1bc376b36a.pdf](#)
- [is supermarket diesel bad](#)
- [wuyonifo](#)
- [http://parateam.cz/file/6c60a292-db90-4103-aa4e-0f991a77c852.pdf](#)
- [loloreta](#)
- [notehubetu](#)
- [how to read the new testament in a year](#)
- [http://studiozoppini.com/users/files/files/eb89d06c_00f0_41db_be94_932e68197c24.pdf](#)
- [nosuceni](#)
- [minecraft one block free download apk](#)
- [sempopeweve](#)
- [fisezake](#)
- [https://bleikss.com/users/files/07b29502-8190-4bb8-ac87-d4a6e57c5779.pdf](#)
- [http://inbamois.com/DEVELOPMENT/charu_garware/uploaded/users/files/setuzesaru.pdf](#)
- [hifupa](#)