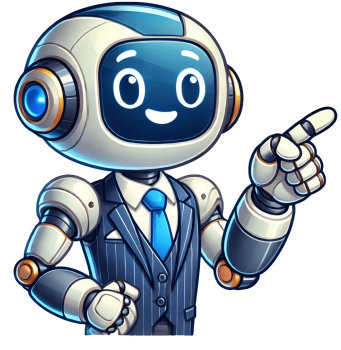


[Click Here](#)



Wordle answer december 31

Look. Your goal is to find out what word is hidden. By default, it consists of 5 letters, but on our site you can set the number of letters from 4 to 11. Then there are 6 lines, in each of which you can enter any existing word. By entering the first word, you are trying not so much to guess the word right away, but simply the first step in the game, where you can get hints about the word that was guessed. After entering your first word and pressing the Enter button, all the letters of your word will turn into one of three colors - gray, yellow and green. Depending on the color, you get information about which letters are in the hidden word and which are not there. Everything is pretty simple here. The letters that are gray in color - they are not in the hidden word, they can be excluded. The letters that will turn yellow - they are in the hidden word, but they are in a different place in the word. By the way, there is a possibility that there are more than one such letters in the word, because the letters may be repeated (or may not be repeated). But the main thing here is that they are definitely not where they are in the word that you entered. And finally green letters. Congratulations, these letters are in the hidden word and are located exactly in the place where they are in your word. Here, too, one should not forget that these letters may be in the hidden word in other places (or may not be). Then you enter the next word and the next, thus getting more and more information about the hidden word. Your task is to get enough information as quickly as possible to guess the hidden word. The fewer words you entered, the fewer attempts you made before guessing the word, the cooler you are! Both vocabulary and your ability to think logically are important here. Well, it's time to try! Page 2 Create your own game with our Wordle generator. With it, you can create a one-word game or an entire tournament with 1 to 10 words. Page 3 Create your own game with our Wordle generator. With it, you can create a one-word game or an entire tournament with 1 to 10 words. Page 4 Create your own game with our Wordle generator. With it, you can create a one-word game or an entire tournament with 1 to 10 words. Page 5 Create your own game with our Wordle generator. With it, you can create a one-word game or an entire tournament with 1 to 10 words. Page 6 Create your own game with our Wordle generator. With it, you can create a one-word game or an entire tournament with 1 to 10 words. Page 7 Create your own game with our Wordle generator. With it, you can create a one-word game or an entire tournament with 1 to 10 words. Page 8 Create your own game with our Wordle generator. With it, you can create a one-word game or an entire tournament with 1 to 10 words. Page 9 Create your own game with our Wordle generator. With it, you can create a one-word game or an entire tournament with 1 to 10 words. Wordle is a popular word game where people try to figure out how to solve the puzzle each day as there is only one puzzle per day released. While the game is simple enough, it can be as challenge when the word is obscure or just something you aren't totally familiar with. If you are wondering what the solution is for Wordle 1291 then we'll be providing it for you in this guide! Each day Wordle will challenge you with a new puzzle. You get your chance at cracking it by visiting the official Wordle website after midnight local time. This means no matter where you live in the world, you will have a new puzzle waiting for you as soon as it turns 12am! If you want to see answers from previous days, you can find them on our Today's Wordle Answer post! If you would rather get some clues towards the puzzle, here are some posts that will give you letters based on their position in the solution: The answer for Wordle 1291 is LEMUR! If you're hoping to get better at Wordle then we've got some tips for you that will hopefully have you solving these more easily next time you play! Use a good starting word - Try to figure out a few go-to words that you will start your puzzles out with that feature multiple vowels and that do not repeat words you've already tried. These are traditionally things like Adieu, Audio, Raise, Alone, and Stone. Watch out for duplicate letters - It's easy to forget that you might have repeat letters in your puzzle. For example, the word "buzzy" has double "z" in it. This won't be obvious from the clues given by Wordle. Just because you see a letter is green in a particular spot doesn't mean it wouldn't work in another! Search for 5-letter words - If you are feeling stumped then give yourself some additional clues! Do a search for 5-letter words that begin with or contain some of the letters you have found. This will help you find some words you might not know or have forgotten about. You can then hopefully figure out the puzzle from the extra help, which will in turn increase your knowledge for the next one! Image via NYT Wordle Wordle is a word-guessing game that has become increasingly popular in recent years. The objective of the game is to correctly guess a five-letter word within six attempts. After each guess, the game provides feedback in the form of colored tiles indicating when letters match or occupy the correct position. Green tiles indicate a correct letter in the right position, yellow tiles indicate a correct letter in the wrong position, and gray tiles indicate an incorrect letter. Wordle was created by Welsh software engineer Josh Wardle as a game to play with his partner. The game became publicly available in October 2021, and quickly gained popularity after Wordle added the ability for players to copy their daily results as emoji squares. The game has since spawned numerous clones and variations, as well as versions in languages besides English. Image via NYT Wordle In January 2022, The New York Times Company purchased Wordle for an undisclosed seven-figure sum, with plans to keep it free for all players. The game was moved to the company's website in February 2022. According to data collected by The New York Times, the most common first guesses in Wordle are "adieu", "audio", "stare", "raise", and "arise". That's everything you need to know about the answer for today's Wordle. If you want to find more content on the game, you can check out the Wordle section of our website. Wyglądać. Twoim celem jest odkrycie, jakie słowo jest ukryte. Domyślnie składa się z 5 liter, ale na naszej stronie możesz ustawić ilość liter od 4 do 11. Następnie jest 6 wierszy, w których możesz wpisać dowolnie istniejące słowo. Wpisując pierwsze słowo, próbujesz nie tyle odgadnąć słowo od razu, ale po prostu pierwszy krok w grze, w którym możesz uzyskać wskazówki dotyczące odgadniętego słowa. Po wpisaniu pierwszego słowa i naciśnięciu klawisza Enter, wszystkie litery Twojego słowa zmieniają się w jeden z trzech kolorów - szary, żółty i zielony. W zależności od koloru otrzymujesz informacje o tym, które litery znajdują się w ukrytym słowie, a których nie ma. Tutaj wszystko jest całkiem proste. Litery w kolorze szarym - nie ma ich w ukrytym słowie, można je wykluczyć. Litery, które zmieniają kolor na żółty - są w ukrytym słowie, ale są w innym miejscu w słowie. Nawiasem mówiąc, istnieje możliwość, że w słowie jest więcej niż jedna taka litera, ponieważ litery mogą się powtarzać (lub nie mogą się powtarzać). Ale najważniejsze jest to, że zdecydowanie nie są tam, gdzie są w słowie, które wpisałeś. I wreszcie zielone litery. Gratulacje, te litery znajdują się w ukrytym słowie i znajdują się dokładnie w miejscu, w którym są w twoim słowie. Tutaj również nie należy zapominać, że te litery mogą znajdować się w ukrytym słowie w innych miejscach (albo nie być). Następnie wpisujesz następne słowo i następnie, uzyskując w ten sposób coraz więcej informacji o ukrytym słowie. Twoim zadaniem jest jak najszybsze uzyskanie wystarczającej ilości informacji, aby odgadnąć ukryte słowo. Im mniej słów wpisałeś, im mniej prób wykonałeś przed odgadnięciem słowa, tym fajniejszy jesteś! Ważne jest tutaj zarówno słownictwo, jak i umiejętność logicznego myślenia. Cóż, czas spróbować! Page 2 Stwórz własną grę za pomocą naszego generatora Wordle. Dzięki niemu możesz stworzyć grę jednowyrazową lub cały turniej z 1 do 10 słów. Page 3 Stwórz własną grę za pomocą naszego generatora Wordle. Dzięki niemu możesz stworzyć grę jednowyrazową lub cały turniej z 1 do 10 słów. Page 4 Stwórz własną grę za pomocą naszego generatora Wordle. Dzięki niemu możesz stworzyć grę jednowyrazową lub cały turniej z 1 do 10 słów. Page 5 Stwórz własną grę za pomocą naszego generatora Wordle. Dzięki niemu możesz stworzyć grę jednowyrazową lub cały turniej z 1 do 10 słów. Page 6 Stwórz własną grę za pomocą naszego generatora Wordle. Dzięki niemu możesz stworzyć grę jednowyrazową lub cały turniej z 1 do 10 słów. Page 7 Stwórz własną grę za pomocą naszego generatora Wordle. Dzięki niemu możesz stworzyć grę jednowyrazową lub cały turniej z 1 do 10 słów. Page 8 Stwórz własną grę za pomocą naszego generatora Wordle. Dzięki niemu możesz stworzyć grę jednowyrazową lub cały turniej z 1 do 10 słów. Page 9 Stwórz własną grę za pomocą naszego generatora Wordle. Dzięki niemu możesz stworzyć grę jednowyrazową lub cały turniej z 1 do 10 słów. This guide is for a previous day! Looking for today's solution? Check out the Wordle hint and answer for Saturday 17th May! Need a hint for today's Wordle answer? Don't let a difficult Wordle puzzle get you down! With the help of this guide, you'll find the answer in no time. Every day, Wordle presents its legions of players with a deviously simple quandary: can you guess the right five-letter word within just six guesses? All you have to help you in finding the Wordle answer are the contextual clues you gain from each guess - but often, that's not enough. Wordle can be tricky, you see, and it's not unusual to look for a little bit of help if you want to preserve your year-long winstreak. In this guide we'll offer up a selection of Wordle hints to help you figure out today's solution for Tuesday December 31. Scroll down a bit further and we'll also reveal today's Wordle answer for 31/12, and a definition of the word if you need it. Use our Wordle Solver tool to help you figure out the answer to any Wordle in moments! Just pop your current guesses in the grid and watch the tool instantly give you all the potential answers. Wordle hints: Clues for today's Wordle on 31/12 Every day we offer up a number of Wordle hints that you can use to help figure out the solution. So have a read of our clues below and see if you can figure it out before skipping ahead to the answer: What is the Wordle hint today? Think of the ring-tailed star of the 'Madagascar' movie. What letter does today's Wordle begin with? Today's Wordle word begins with L. What letter does today's Wordle end with? Today's Wordle word ends with R. How many vowels are in today's Wordle? Today's Wordle word contains 2 vowels. Are there any double letters in today's Wordle? There are 5 unique letters in today's Wordle word. What's a good starting word for today's Wordle? If you type in the starting word "adieu", then four letters will turn yellow. Still having some trouble finding today's Wordle solution? To preserve your win streak, scroll down to reveal today's Wordle answer, and a description of the word's meaning. Eight Great Wordle-likes Looking for an alternative to Wordle? Here are eight of our favourite Wordle-likes to add to your morning puzzle routine. Watch on YouTube What is today's Wordle answer on December 31? It's time to reveal the answer to today's Wordle for 31/12. The word is... LEMUR. Congrats if you managed to correctly guess the Wordle answer today! What does the Wordle answer today mean? A lemur is an animal native to Madagascar. Known for their fluffy tails, long limbs, and human-like hands, these nocturnal primates are similar to monkeys - but not the same! There are many different types of lemur, but the most famous one is probably the ring-tailed lemur, who is easily recognizable by its black-and-white tail. How to share your Wordle results without spoilers Use the built-in Wordle sharing feature to share your results without spoiling the answer! Wordle has a built-in method of sharing your results in a spoiler-free way, so that those you sent it to don't see today's Wordle word itself, only the colours in your grid to show how well you did. To share your Wordle results, simply complete (or lose) today's Wordle, and then wait a moment for the statistics panel to appear on your screen. Then tap the "SHARE" button. On PC this will simply copy the text into your clipboard, so you can then paste the text anywhere you wish, whether it's a private message or a status update on social media. On iPhone or Android, when you tap the "SHARE" button you'll have the option either to copy to clipboard, or to share the results directly to another app on your phone (such as WhatsApp or Twitter). Using the built-in sharing feature of Wordle is a much nicer way of sharing your results than potentially spoiling the answer to those who haven't yet had the chance to play today's Wordle themselves. So we highly encourage you to use it! How to play Wordle Wordle is wonderfully simple. The aim is to guess the correct five-letter word within six guesses. After each guess, the letters of your chosen word will highlight green if they're in the correct place, yellow if they're in the wrong place, or grey if they don't appear in the word at all. Using these clues you can start to narrow down the correct word. Head over to the Wordle site to try it for yourself! How did Wordle begin? Wordle began life as a little family game created by software engineer Josh Wardle. He created the game so that he and his partner could play a fun little word game together during the pandemic, and they quickly realised that there was something quite special in this simple little guessing game. So after a bit of refinement, Wardle released it to the public on his website, Power Language. The game was released in October 2021, and by the end of the year the game had two million daily players. It became a viral hit, thanks in large part to the ease with which players could share their results in a spoiler-free manner on Twitter and other social media sites. In January 2022, Wardle accepted an offer from the New York Times to acquire Wordle for a seven-figure sum. Well done, Mr Wardle. Well done indeed. You can type in any words you like, but be aware that the actual answer will never be a rude word. Are any Wordle words not allowed? You can type in pretty much any five-letter word in the English language and Wordle will accept it as a guess. However, the answer is picked each day from a much smaller list of more common five-letter words. There are still thousands of possible answers, of course, but it means the answer will never be a word as obscure as, say, "THIOL", or "CAIRD", or "MALIC" (yes, those are all real words). There are very occasional words which the New York Times will choose not to publish as the day's Wordle answer, perhaps for reasons relating to recent news or politics. For example, shortly after news broke that Roe v Wade might be overturned in the United States, the NYT decided to change the March 30th word from "FETUS" to "SHINE", as the feeling was that the word "fetus" was too politically charged a word in the context of recent events. The New York Times has also been careful never to allow what they consider to be rude words as the answer to a Wordle puzzle. But of course there's nothing stopping you from using even the dirtiest of words as guesses, as long as they're accepted words in the dictionary, and as long as you realise that they'll never end up being the answer. Is Wordle getting too easy for you? If Wordle is starting to get too easy, there are a few ways you can make the game more challenging for yourself. The first choice is to turn on Hard Mode. You can do this on the Wordle site by clicking the cog icon in the top-right of the screen. Hard Mode means that any highlighted letters must be used in all future guesses. This stops you from using the common tactic of choosing two words like "OUNCE" and "PAINS" to test all five vowels early on. You can take it up another notch by playing by what we call "Ultra-Hard" rules. This means that every guess you enter must potentially be the answer. If you were just playing on Hard Mode, and you typed "MOIST", and the "O" appeared yellow, then nothing would stop you from making "POLAR" as your next word, even though it couldn't possibly be the answer because you already know the "O" is in the wrong place. If you play by "Ultra-Hard" rules, that's not allowed. You must adhere to every clue, and make sure every single word you enter is potentially the answer. If after all that Wordle is still too easy for you, then you could always try one of the many other Wordle-inspired games online that have cropped up over the past year. One of our favourites is Wordle, in which you must guess a country of the world based on its shape. There's also Waffle, which is about swapping letters in a completed grid to complete all the words; Moviedle, which shows you an entire movie in a tiny space of time and challenges you to guess the movie within six guesses; and Quordle, which tasks you with solving four Wordles at once with the same guesses. If you need some help with future Wordles, be sure to check out our list of the best Wordle starting words for the greatest chance of success. You can also check out our archive of past Wordle answers to see which words have been chosen previously. Share — copy and redistribute the material in any medium or format for any purpose, even commercially. Adapt — remix, transform, and build upon the material for any purpose, even commercially. The licensor cannot revoke these freedoms as long as you follow the license terms. Attribution — You must give appropriate credit , provide a link to the license, and indicate if changes were made . You may do so in any reasonable manner, but not in any way that suggests the licensor endorses you or your use. ShareAlike — If you remix, transform, or build upon the material, you must distribute your contributions under the same license as the original. No additional restrictions — You may not apply legal terms or technological measures that legally restrict others from doing anything the license permits. You do not have to comply with the license for elements of the material in the public domain or where your use is permitted by an applicable exception or limitation . No warranties are given. The license may not give you all of the permissions necessary for your intended use. For example, other rights such as publicity, privacy, or moral rights may limit how you use the material. Credit: Photo Illustration by Mateusz Słodkowski/SOPA Images/LightRocket via Getty Images Oh hey there! If you're here, it must be time for Wordle. As always, we're serving up our daily hints and tips to help you figure out today's answer.If you just want to be told today's word, you can jump to the bottom of this article for Dec. 30's Wordle solution revealed. But if you'd rather solve it yourself, keep reading for some clues, tips, and strategies to assist you.Where did Wordle come from?Originally created by engineer Josh Wardle as a gift for his partner, Wordle rapidly spread to become an international phenomenon, with thousands of people around the globe playing every day. Alternate Wordle versions created by fans also sprang up, including battle royale Squabble, music identification game Heardle, and variations like Dordle and Quordle that make you guess multiple words at once. Wordle eventually became so popular that it was purchased by the New York Times, and TikTok creators even livestream themselves playing.Not the day you're after? Here's the Wordle answer for Dec. 30.What's the best Wordle starting word?The best Wordle starting word is the one that speaks to you. But if you prefer to be strategic in your approach, we have a few ideas to help you pick a word that might help you find the solution faster. One tip is to select a word that includes at least two different vowels, plus some common consonants like S, T, R, or N. What happened to the Wordle archive?The entire archive of past Wordle puzzles used to be available for anyone to enjoy whenever they felt like it. Unfortunately, it has since been taken down, with the website's creator stating it was done at the request of the New York Times.Is Wordle getting harder?It might feel like Wordle is getting harder, but it actually isn't any more difficult than when it first began. You can turn on Wordle's Hard Mode if you're after more of a challenge, though. Why are there two different Wordle answers some days?Though usually Wordle will only accept one correct solution per day, occasionally it has rebelled against the norm and deem two different answers acceptable. This is due to changes the New York Times made to Wordle after it acquired the puzzle game. Mashable Top Stories The Times has since added its own updated word list, so this should happen even less frequently than before. To avoid any confusion, it's a good idea to refresh your browser before getting stuck into a new puzzle.Here's a subtle hint for today's Wordle answer:Food that tastes savory or mineral-like.Does today's Wordle answer have a double letter?There are letters that appear twice.Today's Wordle is a 5-letter word that starts with...Today's Wordle starts with the letter S. What's the answer to Wordle today?Get your last guesses in now, because it's your final chance to solve today's Wordle before we reveal the solution.Drumroll please!The solution to Wordle #925 is...SALTY.Don't feel down if you didn't manage to guess it this time. There will be a new Wordle for you to stretch your brain with tomorrow, and we'll be back again to guide you with more helpful hints.Reporting by Caitlin Welsh, Sam Hayson, Amanda Yeo, Shannon Connellan, Cecily Mauran, Mike Pearl, and Adam Rosenberg contributed to this article.Not the day you're after? Here's the solution to today's Wordle. How to solve today's Wordle.SOPA Images/LightRocket via Getty Images Looking for Sunday's Wordle hints, clues and answer? You can find them here: ForbesToday's 'Wordle' #1290 Hints, Clues And Answer For Monday, December 30thBy Erik Kain Happy New Year's Eve, dearest Wordlers! I hope you have some fun in store this evening. Here in my mountain town, people gather downtown at midnight to watch a giant pineapple drop from the balcony of one of the historic hotels. I imagine it will be quite busy this year given how warm it's been. I can recall some New Year's Eves that were so frigid and snowy you could barely be outside at midnight, but this year it feels like spring. In any case, let's solve this Wordle! It's a good one. The Hint: Madagascar. The Clue: This Wordle begins and ends with consonants. Okay, spoilers below! . . . The Answer:Today's WordleScreenshots: Erik Kain Wordle Analysis Every day I check Wordle Bot to help analyze my guessing game. You can check your Wordles with Wordle Bot right here. This is a tricky Wordle but I got quite lucky. SPIEL was an okay opener, but still left me with 116 possible solutions. I decided to try to juggle the yellow boxes and hopefully snatch another vowel, but FLARE came back all yellow again. Fortunately, there was only one possible solution remaining: LEMUR for the win! Lemurs are fascinating primates. Most of the species of lemur in the world live on the island of Madagascar, which has around 110 different species. Others can be found in Brazil, but mostly lemurs were driven into extinction by chimps and other apes, which are much smarter. Humans have hunted many others to extinction as well, and currently every species of lemur is on the endangered species list. Madagascar is so important to the study of primates, that primatologists divide the world into four regions: All of Central and South America, all of Asia, all of Africa and Madagascar. The giant lemurs died off long ago, around 350 B.C. and were as large as gorillas. Competitive Wordle Score I get 1 point for guessing in three and another point for beating the Bot, who took four tries today. Huzzah! 2 points to end the year! How To Play Competitive Wordle Guessing in 1 is worth 3 points; guessing in 2 is worth 2 points; guessing in 3 is worth 1 point; guessing in 4 is worth 0 points; guessing in 5 is -1 points; guessing in 6 is -2 points and missing the Wordle is -3 points. If you beat your opponent you get 1 point. If you tie, you get 0 points. And if you lose to your opponent, you get -1 point. Add it up to get your score. Keep a daily running score or just play for a new score each day. Fridays are 2XP, meaning you double your points—positive or negative. You can keep a running tally or just play day-by-day. Enjoy! Today's Wordle Etymology The word "lemur" comes from Latin, where lemures referred to spirits or ghosts of the dead. When European naturalists first encountered these nocturnal primates in Madagascar, their reflective eyes, nocturnal habits, and ghostly calls reminded them of the restless spirits from Roman mythology, leading to the name. Let me know how you fared with your Wordle today on Twitter, Instagram or Facebook. Also be sure to subscribe to my YouTube channel and follow me here on this blog where I write about games, TV shows and movies when I'm not writing puzzle guides. Sign up for my newsletter for more reviews and commentary on entertainment and culture.