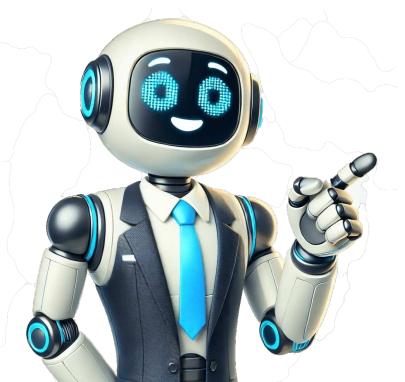


Click to verify





































Skip to content BSc (Hons) Applied Zoology will allow you to study structure, classification, behaviour, health and nutrition, and conservation of a wide range of animal species. Through the programme you will gain specialist knowledge and skills in ecology, physiology, genetics, evolution, taxonomy, and behaviour using the diversity of the Animal Kingdom as a focus. The programme recognises the importance of an understanding of both scientific principles and the socio-economic context to enable an intelligent application of policies, technologies, and management systems appropriate to wild, zoo, domestic, and agricultural animals, in the UK and internationally. Attention is given to specific strategies and key skills such as those emerging with respect to wildlife conservation, climate change adaptation and mitigation, disease and pest control, managing fisheries, improving livestock including through genetic modification, animal welfare on farms and in zoos, and the national and international legislation underpinning these subjects. As an Applied Zoologist you will develop a broad knowledge of the Animal Kingdom and be able to apply a range of skills to solve practical problems and to explore a wide variety of career opportunities. Through a range of teaching and learning methods including tutorials, laboratory and field classes, and residential field courses you will develop your key skills including field surveying, species identification, sampling procedures, data analysis and research methods. Opportunities to investigate the use of technologies in the studies of animals, including Geographical Information Systems and eDNA, will be explored. As a graduate you will possess practical skills in laboratory and field techniques, project management, data handling, analysis, and report writing, as well as the ability to engage in further study and postgraduate research. Finally, recognising the importance of the effective communication of scientific and related material to a wider audience of planners, policymakers and the general public, you will acquire skills in report writing, oral presentations and critical and analytical thinking. A core first year, shared between Applied Zoology, Zoology with Entomology, and Zoology with Environmental Management allows students the freedom to transfer between these three course areas during their first year, once they have experienced some of the learning opportunities at Harper Adams University. You will put into context your learning through the opportunity to select species to focus your studies on in a number of their modules throughout the programme. In Year 2 you will start to study your specialisations, allowing for further contextualization. Your integrated placement year in Year 3 of the programme allows you to put into practice what you have learnt, and to develop both specialist and core skills that will increase your employability as well as feeding into your final year of study. During the final year, you will explore your specialisation further and will undertake original research as part of your Honours Research Project. Select Study Level This shows universities offering undergraduate courses, and changes the order, filters and next steps available for your search.