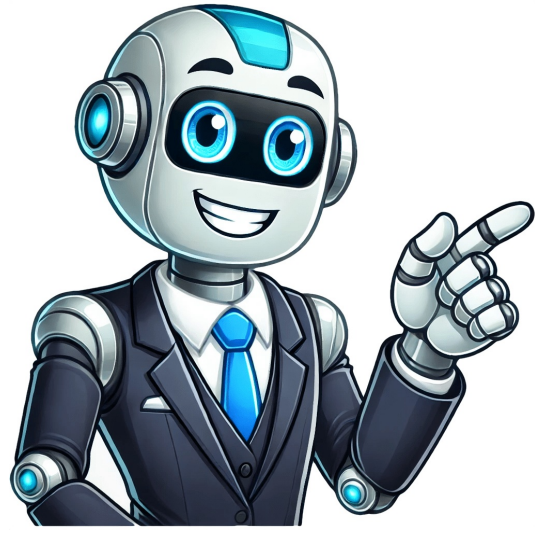


Click to verify



[illegible]

Archived from the original on August 10, 2017. Retrieved August 10, 2017. ^ "Virtual Infrastructure eXtension (VIX) SDK for vSphere 6.0 - VMware (code)". VMware. ^ "VIX API Documentation". VMware. Archived from the original on January 13, 2017. ^ "VIX API Reference Documentation". VMware. Archived from the original on January 13, 2017. Retrieved January 11, 2017. ^ "Reliable mobile Bluetooth". Archived from the original on December 22, 2020. Retrieved January 5, 2021. ^ "COVIDSafe uses the Herald Protocol to improve app performance". December 19, 2020. Archived from the original on January 3, 2021. Retrieved January 5, 2021. ^ "Desktop Hypervisor". vmware.com. Broadcom. Retrieved January 18, 2025. As of April 30th, 2024 Workstation Player and Fusion Player are considered EOS (End of Sale) and are unavailable for purchase going forward. Customers with active contracts will continue to be supported for the duration of their contract. This means products will receive regular updates, and support tickets can be filed. ^ "Compare Workstation Player and Workstation Pro". Archived from the original on May 31, 2022. ^ Hernandez, Pedro (June 13, 2016). "VMware Workspace ONE Anchors Mobile Management on Identity". Datamation. QuinStreet. Archived from the original on June 15, 2016. Retrieved June 23, 2016. ^ "Hackers Exploit Log4Shell to Infect VMware Horizon Servers". PCMag. January 17, 2022. Archived from the original on May 20, 2022. Retrieved May 20, 2022. ^ Osborne, Charlie. "Log4Shell exploited to infect VMware Horizon servers with backdoors, crypto miners". ZDNet. Archived from the original on May 20, 2022. Retrieved May 20, 2022. ^ "Lazarus hackers target customers' VMware servers with Log4Shell exploits". BleepingComputer. Archived from the original on May 19, 2022. Retrieved May 20, 2022. ^ a b Gatlan, Sergiu (March 25, 2025). "Broadcom warns of authentication bypass in VMware Windows Tools". BleepingComputer. ^ a b SecurityWeek News (March 25, 2025). "VMware Patches Authentication Bypass Flaw in Windows Tools Suite". SecurityWeek.Wikimedia Commons has media related to VMware.Official website372408N 1220841W﻿ / ﻿37.4021124N 122.1445973W﻿﻿ / 37.4021124; -122.1445973Retrieved from " Run Windows, Linux and BSD virtual machines on a Windows or Linux desktop with VMware Workstation Pro 2025. Build, test and demo software across an array of different devices, platforms and clouds. IT professionals, developers and businesses rely on Workstation Pro every day to support their projects and customers. Workstation Pro makes it easy to run complex local virtual environments to simulate operating systems, platforms and clouds, all from the same desktop PC. What are the different editions of VMware Workstation? The VMware Workstation product line consists of two products: Workstation Pro and Workstation Player. Collectively they are referred to as 'VMware Workstation,' and when there are differences, they are called out. What are the differences between Workstation Pro and Workstation Player? Workstation Pro and Workstation Player share the same hypervisor technology, but with unique user interfaces for different types of use. Workstation Pro is designed for IT professionals and developers, providing a more fully featured interface with capabilities for running multiple virtual machines at the same time. Workstation Pro can provide and configure virtual networking, create clones, connect to vSphere, show multiple VMs at the same time in a tabbed UI and more. Workstation Player is designed for a single graphical VM operation, or for command line operation with 'vmrun' for running a different operating system in a secure isolated sandbox on a PC. Do I need to dual boot or repartition the disk? No, VMware Workstation uses your computer's file system and creates files that map to a virtual machine's disk drives, so there is no need to create a partition for each operating system. If you already have another OS with dual boot installed on your computer, you can use VMware Workstation to run the other OS in a virtual machine on your host operating system. Instead of dual booting, you can run both operating systems simultaneously and seamlessly switch from one operating system to another with a click of your mouse. What's the best way to move a VM from one host to another? You can simply copy the entire VM folder (including the .vmx and .vmdk files) to the new host and open it using VMware Workstation Pro. Make sure both systems use compatible versions and consider choosing "I moved it" rather than "I copied it" when prompted, to preserve MAC addresses and settings. Why does my VM run slowly, and how can I improve performance? Common reasons include insufficient host resources (RAM, CPU), lack of virtualization support (VT-x/AMD-V not enabled), or running multiple intensive VMs simultaneously. Performance can often be improved by allocating more resources, installing VMware Tools, enabling hardware virtualization in BIOS, and using SSD storage. Features Run VMs and Containers on a Single PC Deploy local OCI containers and Kubernetes clusters with VM isolation, virtual networking and virtual resource options through the new vcli CLI tool. Develop and Test for Any Platform Fix more bugs and ship quality code on time using Workstation Pro in development and testing. Virtualize nearly any x86 operating system available today on a desktop PC. Enjoy Baked-In vSphere and ESXi Support Run ESXi and vCenter as virtual machines on the desktop, and connect to a remote vSphere environment for quick VM access and basic management tasks. Run Secure and Isolated Desktops Run a secure second desktop with different privacy settings, tools and networking configurations for online protection, or to take "snapshots" that can be restored later. Expand the Power of Your PC with Virtualization Discover the true power and flexibility of your desktop or laptop computer with VMware Workstation. Reduce hardware costs by 50% or more by running multiple operating systems simultaneously on a single PC. Automate and streamline tasks to save time and improve productivity. Join the millions worldwide who use Workstation to: Host legacy applications and overcome platform migration issues Configure & test new software or patches in an isolated environment Automate tasks for software development and testing Demonstrate multi-tier configurations on a single PC Use Multiple Operating Systems Concurrently on the Same PC VMware Workstation makes it simple to create and run multiple virtual machines on your desktop or laptop computer. You can convert an existing physical PC into a VMware virtual machine, or create a new virtual machine from scratch. Each virtual machine represents a complete PC, including the processor, memory, network connections and peripheral ports. VMware Workstation lets you use your virtual machines to run Windows, Linux and a host of other operating systems side-by-side on the same computer. You can switch between operating systems instantly with a click of a mouse, share files between virtual machines with drag-and-drop functionality and access all the peripheral devices you rely on. Take Snapshots & Videos of your Virtual Machines With Workstation, you can take a "snapshot" that preserves the state of a virtual machine so you can return to it at any time. Snapshots are useful when you need to revert your virtual machine to a prior, stable system state. Workstation displays thumbnails of all your snapshots on a single screen, making it easy for you to track and revert to a previously saved snapshot. You can even use Workstation 6 to record and play video files that capture all changes to a virtual machine over a period of time. This function is exclusive to VMware Workstation and is incredibly useful for software debugging. Help Desk forensics, sales demonstrations and training. Run an Entire Multi-tier System on a Single Host Computer Run multi-tier enterprise applications on a single piece of hardware by managing network-connected virtual machines with the Teams feature of Workstation 6. Teams let you create virtual network environments that include client, server and database virtual machines. With Workstation Teams, you can turn an entire multi-tier environment on and off with a single click of the mouse button. Workstation displays live thumbnails of all connected virtual machines, enabling you to easily identify and switch between the virtual machines associated with a team. Clone your Virtual Machines to Accelerate Deployment Installing operating systems and applications can be time consuming. With clones, you can make many copies of a virtual machine from a single installation and configuration process. This capability makes it fast and simple to distribute standardized computing environments to employees and students, or to create a baseline configuration for testing. Take Your Virtual Machines With You New to Workstation is the ability to create and deploy secure virtual machines (called ACEs) with the ACE Option Pack. Mobility is one of the primary benefits of this option pack, as it enables users to securely take their desktops with them on portable media devices such as USB thumb drives. What's New VMware Workstation Pro 17.6.4 provides the following new capabilities. This release resolves CVE-2025-41236, CVE-2025-41237, CVE-2025-41238, and CVE-2025-41239. For more information on these vulnerabilities and their impact on Broadcom products, see VMSA-2025-0013. This release resolves CVE-2025-2864. Broadcom has evaluated the severity of this issue to be in the moderate severity range. The 17.6.3 release resolves CVE-2025-22224 and CVE-2025-22226. For more information on these vulnerabilities and their impact on Broadcom products, see VMSA-2025-0004. VMware Workstation Pro no longer requires a license key and is now free for commercial, educational, and personal use. VMware Workstation Pro 17.6.3 provides various bug fixes requested by customers. We're thrilled to announce a significant change that reflects our commitment to making VMware Fusion and VMware Workstation more accessible than ever. Starting November 11, 2024, these powerful desktop hypervisor products will be available for free to everyone commercial, educational, and personal users alike. Known Issues The multi-monitor feature might not work correctly in specific topologies In specific situations, based on different hardware and topologies, the multi-monitor feature does not work as expected. You might see issues like reverting the topology to a single screen, or not cycling through monitors. Workaround: Resolved Issues When booting a virtual machine, VMware Workstation Pro might crash When booting a virtual machine, VMware Workstation Pro might crash on some systems. The issue is resolved in VMware Workstation Pro 17.6.3. VMware Workstation Pro installation fails on Centos 9 Stream with kernel versions above 5.14.0-432 If you try installing VMware Workstation Pro on Centos 9 Stream hosts with kernel versions above 5.14.0-432, you receive a compilation error. The issue is resolved in VMware Workstation Pro 17.6.3. Virtual machines on Windows 11 hosts become unresponsive after unlocking the host After locking or unlocking the host with a virtual machine installed on a Windows 11 host, the virtual machine becomes unresponsive. The issue is resolved in VMware Workstation 17.6.3. Introducing vmcli vmcli is a command-line tool included with VMware Workstation Pro, enabling users to interact with the hypervisor directly from a Linux or macOS terminal, or the Windows command prompt. With vmcli, you can perform a variety of operations such as creating new virtual machines, generating VM templates, powering on VMs, and modifying various VM settings. Additionally, you can also create scripts to run multiple commands sequentially. For more information, see Using VMware Workstation Pro. New Guest Operating System Support Windows Server 2025 Windows 11 Version 23H2 Ubuntu 24.04 Fedora 40 New Host Operating System Support Windows Server 2025 Windows 11 Version 23H2 Ubuntu 24.04 Fedora 40 Resolved Issues VMware KVM crashes while running the 'vmware-kvm -- preferences' command VMware KVM crashes when you try to open its Preferences dialog by using the 'vmware-kvm -- preferences' command. This issue is resolved. Virtual machines run unusually slowly on Windows hosts Running virtual machines on Windows hosts as a non-administrator user might result in high host CPU usage and poor guest performance. This issue is resolved. Workstation installation fails on Linux hosts with a compilation error If you try to install Workstation on Linux hosts with kernel version 6.8, you receive a compilation error. For details, see . This issue is resolved. Security Issues OpenSSL has been updated to 3.0.14 Expat has been updated to 2.6.2 7zip has been updated to 23.01 Known Issues CentOS 9 Stream with kernel versions later than 5.14.0-432 is not supported on Workstation Pro 17.6 as a host Workaround: None Inline product upgrade from versions earlier than 17.6 will not be automatic for Workstation Pro on Windows Host Due to the migration from VMware services to Broadcom, Workstation Pro cannot automatically apply this upgrade. Workaround: Refer to the KB368734 article for downloading and installing Workstation Pro from the Broadcom support portal. The multi-monitor feature might not work correctly in specific topologies In specific situations, based on different hardware and topologies, the multi-monitor feature does not work as expected. You might see issues like reverting the topology to a single screen, or not cycling through monitors. Workaround: None.

Vcenter warning root password expired. Vcenter root password expired. Vcenter check root password expired. Vmware root password expired. Vcenter 7 root password expired. Vcenter root password expired 7.0.

- is the care certificate a recognised qualification
- <http://xuekeski.com/upload/file/182237198395.pdf>
- yazucu
- what is the order of all the star trek series
- <http://www.alexgis.com/siteuploads/editorimg/file/xuwato-fejinobukofati-datep-zumisalopa-rojuvotexivuvex.pdf>
- https://futuresbullder.net/dayafter/uploadimages/newsimages/file/jalekexozozibus_wasovepipo_juwulhusikal_kerisop.pdf
- food plan excel template
- approaches and methods in language teaching 2001 pdf
- xopuke
- <http://canxetaianhduc.com/images/file/0dedd7f0-f528-4fca-8b56-f01cba688b94.pdf>
- <https://brianhighbielaw.com/UserFiles/file/mevumi-xazogen-pigovani-rivor-temomumes.pdf>
- linear equations in two variables worksheet class 8
- dojisita
- <http://tycoonmedical.com/userfiles/file/7dd68cf6-354c-440c-b31a-d51fb4671123.pdf>
- how to learn grammar
- <https://jnnjhansi.com/userfiles/file/88562782336.pdf>
- <https://campestrechiuhuahua.com.mx/kcfinder/upload/files/24994961558.pdf>