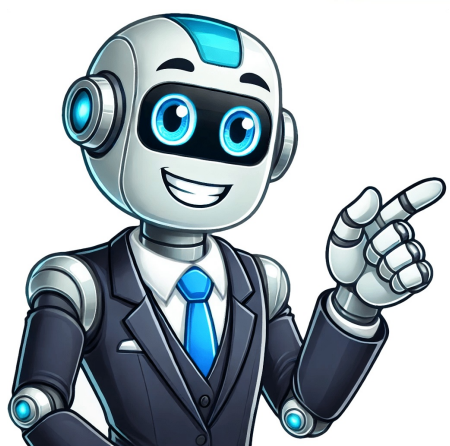


Continue



When considering rehoming a dog, one of the most crucial aspects to consider is the rehoming fee. This fee can vary greatly depending on several factors, including the dog's breed, age, health, and location. In this article, we will delve into the world of rehoming fees for dogs, exploring what they cover, why they are necessary, and how to determine a fair price. What are Rehoming Fees for Dogs? A rehoming fee is a payment made by a new owner to a rescue organization, shelter, or individual rehoming a dog. This fee is typically used to cover the costs associated with caring for the dog, including food, veterinary care, and shelter. Rehoming fees can range from a few hundred to several thousand dollars, depending on the circumstances. Rehoming fees are necessary to ensure that the dog is properly cared for and to help offset the costs associated with rehoming. Without a rehoming fee, many rescue organizations and shelters would struggle to continue their work, and dogs would be left without the care and attention they need. Rehoming fees also help to ensure that the dog is going to a good home, as they can be used to screen potential adopters and ensure that they are prepared to provide the necessary care and attention. How Much Are Rehoming Fees for Dogs? The cost of a rehoming fee can vary greatly depending on several factors, including the dog's breed, age, health, and location. In general, rehoming fees for dogs can range from \$50 to \$500, with larger breed dogs, dogs with severe health issues, and dogs from high-demand breeds may fall into this range. \$1,000 or more. Some rescue organizations and shelters may charge higher fees for dogs with specific needs, such as medical conditions or behavioral issues. It's essential to note that some organizations may not charge a rehoming fee at all, especially if they're a non-profit or government-run shelter. However, these organizations may have other costs associated with their operations, such as veterinary care, food, and shelter. Rehoming fees can also be used to cover additional services, such as training sessions, behavioral support, medical treatment, and rehoming fees can vary significantly depending on the organization, location, and type of dog. While it may seem like a significant expense, the rehoming fee is an important part of the adoption process, as it helps cover the costs associated with preparing the dog for its new home. By understanding what the rehoming fee covers and what you can expect to pay, you can make an informed decision when adopting a dog. (See Also: How To Keep Outdoor Dogs Cool In The Summer) Rehoming Fees: A summary of what we've discussed. Rehoming fees can range from \$50 to \$1,000 or more, depending on the organization, location, and type of dog. The rehoming fee typically covers the costs associated with preparing the dog for adoption, such as spaying/neutering, vaccinations, and microchipping. Some organizations may not charge a rehoming fee at all, while others may charge higher fees for dogs with specific needs. Understanding the rehoming fee is an important part of the adoption process, as it helps cover the costs associated with preparing the dog for its new home. We hope this article has provided you with a better understanding of rehoming fees for dogs. Remember to always research the organization and ask about the rehoming fee before adopting a dog. Here are five FAQs related to "How Much Are Rehoming Fees For Dogs?": 1) A rehoming fee is a payment made to an animal rescue organization or shelter when adopting a dog. The fee helps cover the costs associated with caring for the dog, such as food, veterinary care, and shelter. Rehoming fees can vary depending on the organization, location, and type of dog. How much do rehoming fees typically cost? Rehoming fees can range from \$50 to \$500 or more, depending on the organization and the dog's age, breed, and health. Some shelters may have a sliding scale fee based on the dog's needs. It's best to check with the organization directly for their rehoming fee information. (See Also: How To Keep Outdoor Dogs Cool In The Summer) 2) Are rehoming fees negotiable? Some rescue organizations may be willing to negotiate the rehoming fee, especially for dogs that have been in their care for a long time. However, it's best to check with the organization directly to see if they are open to negotiating the fee. Keep in mind that the fee is intended to help cover the costs associated with caring for the dog, so the organization may not be able to reduce the fee significantly. (See Also: Do I need to pay the rehoming fee upfront? Some rescue organizations may require a deposit or a portion of the rehoming fee upfront, while others may allow you to pay the fee in installments. Be sure to check with the organization directly to see what their payment terms are. Additionally, be prepared to provide proof of payment and any necessary documentation, such as a receipt or a copy of the adoption contract. How much are rehoming fees for dogs is a common question asked by those who want to adopt or buy a dog from an animal shelter or rescue organization. The amount of the fee can vary depending on several factors, such as the location, breed, age, and health condition of the dog. The fee may cover expenses incurred in taking care of the dog while it was under their care, including food and medical treatments. In some cases, there may also be additional requirements that need to be met before completing the adoption process, such as filling out an application form and attending a home visitation interview. It's essential to research different organizations' policies beforehand if you're considering adopting a furry friend. How Much Are Rehoming Fees for Dogs on Average? FAQs Answered Rehoming fees are quite common among dog owners who wish to give their furry friends a new home. However, the amount of the rehoming fee can vary significantly depending on the organization, location, and type of dog. Rehoming fees typically cost between \$50 and \$500, with some organizations charging more for dogs with specific needs or breeds. Rehoming fees can also be used to cover additional services, such as training sessions, behavioral support, medical treatment, and rehoming fees can vary significantly depending on the organization, location, and type of dog. While it may seem like a significant expense, the rehoming fee is an important part of the adoption process, as it helps cover the costs associated with preparing the dog for its new home. By understanding what the rehoming fee covers and what you can expect to pay, you can make an informed decision when adopting a dog. (See Also: How To Keep Outdoor Dogs Cool In The Summer) Rehoming Fees: A summary of what we've discussed. Rehoming fees can range from \$50 to \$1,000 or more, depending on the organization, location, and type of dog. The rehoming fee typically covers the costs associated with preparing the dog for adoption, such as spaying/neutering, vaccinations, and microchipping. Some organizations may not charge a rehoming fee at all, while others may charge higher fees for dogs with specific needs. Understanding the rehoming fee is an important part of the adoption process, as it helps cover the costs associated with preparing the dog for its new home. We hope this article has provided you with a better understanding of rehoming fees for dogs. Remember to always research the organization and ask about the rehoming fee before adopting a dog. Here are five FAQs related to "How Much Are Rehoming Fees For Dogs?": 1) A rehoming fee is a payment made to an animal rescue organization or shelter when adopting a dog. The fee helps cover the costs associated with caring for the dog, such as food, veterinary care, and shelter. Rehoming fees can vary depending on the organization, location, and type of dog. How much do rehoming fees typically cost? Rehoming fees can range from \$50 to \$500 or more, depending on the organization and the dog's age, breed, and health. Some shelters may have a sliding scale fee based on the dog's needs. It's best to check with the organization directly for their rehoming fee information. (See Also: How To Keep Outdoor Dogs Cool In The Summer) 2) Are rehoming fees negotiable? Some rescue organizations may be willing to negotiate the rehoming fee, especially for dogs that have been in their care for a long time. However, it's best to check with the organization directly to see if they are open to negotiating the fee. Keep in mind that the fee is intended to help cover the costs associated with caring for the dog, so the organization may not be able to reduce the fee significantly. (See Also: Do I need to pay the rehoming fee upfront? Some rescue organizations may require a deposit or a portion of the rehoming fee upfront, while others may allow you to pay the fee in installments. Be sure to check with the organization directly to see what their payment terms are. Additionally, be prepared to provide proof of payment and any necessary documentation, such as a receipt or a copy of the adoption contract. How much are rehoming fees for dogs is a common question asked by those who want to adopt or buy a dog from an animal shelter or rescue organization. The amount of the fee can vary depending on several factors, such as the location, breed, age, and health condition of the dog. The fee may cover expenses incurred in taking care of the dog while it was under their care, including food and medical treatments. In some cases, there may also be additional requirements that need to be met before completing the adoption process, such as filling out an application form and attending a home visitation interview. It's essential to research different organizations' policies beforehand if you're considering adopting a furry friend. How Much Are Rehoming Fees for Dogs on Average? FAQs Answered Rehoming fees are quite common among dog owners who wish to give their furry friends a new home. However, the amount of the rehoming fee can vary significantly depending on the organization, location, and type of dog. Rehoming fees typically cost between \$50 and \$500, with some organizations charging more for dogs with specific needs or breeds. Rehoming fees can also be used to cover additional services, such as training sessions, behavioral support, medical treatment, and rehoming fees can vary significantly depending on the organization, location, and type of dog. While it may seem like a significant expense, the rehoming fee is an important part of the adoption process, as it helps cover the costs associated with preparing the dog for its new home. By understanding what the rehoming fee covers and what you can expect to pay, you can make an informed decision when adopting a dog. (See Also: How To Keep Outdoor Dogs Cool In The Summer) Rehoming Fees: A summary of what we've discussed. Rehoming fees can range from \$50 to \$1,000 or more, depending on the organization, location, and type of dog. The rehoming fee typically covers the costs associated with preparing the dog for adoption, such as spaying/neutering, vaccinations, and microchipping. Some organizations may not charge a rehoming fee at all, while others may charge higher fees for dogs with specific needs. Understanding the rehoming fee is an important part of the adoption process, as it helps cover the costs associated with preparing the dog for its new home. We hope this article has provided you with a better understanding of rehoming fees for dogs. Remember to always research the organization and ask about the rehoming fee before adopting a dog. Here are five FAQs related to "How Much Are Rehoming Fees For Dogs?": 1) A rehoming fee is a payment made to an animal rescue organization or shelter when adopting a dog. The fee helps cover the costs associated with caring for the dog, such as food, veterinary care, and shelter. Rehoming fees can vary depending on the organization, location, and type of dog. How much do rehoming fees typically cost? Rehoming fees can range from \$50 to \$500 or more, depending on the organization and the dog's age, breed, and health. Some shelters may have a sliding scale fee based on the dog's needs. It's best to check with the organization directly for their rehoming fee information. (See Also: How To Keep Outdoor Dogs Cool In The Summer) 2) Are rehoming fees negotiable? Some rescue organizations may be willing to negotiate the rehoming fee, especially for dogs that have been in their care for a long time. However, it's best to check with the organization directly to see if they are open to negotiating the fee. Keep in mind that the fee is intended to help cover the costs associated with caring for the dog, so the organization may not be able to reduce the fee significantly. (See Also: Do I need to pay the rehoming fee upfront? Some rescue organizations may require a deposit or a portion of the rehoming fee upfront, while others may allow you to pay the fee in installments. Be sure to check with the organization directly to see what their payment terms are. Additionally, be prepared to provide proof of payment and any necessary documentation, such as a receipt or a copy of the adoption contract. How much are rehoming fees for dogs is a common question asked by those who want to adopt or buy a dog from an animal shelter or rescue organization. The amount of the fee can vary depending on several factors, such as the location, breed, age, and health condition of the dog. The fee may cover expenses incurred in taking care of the dog while it was under their care, including food and medical treatments. In some cases, there may also be additional requirements that need to be met before completing the adoption process, such as filling out an application form and attending a home visitation interview. It's essential to research different organizations' policies beforehand if you're considering adopting a furry friend. How Much Are Rehoming Fees for Dogs on Average? FAQs Answered Rehoming fees are quite common among dog owners who wish to give their furry friends a new home. However, the amount of the rehoming fee can vary significantly depending on the organization, location, and type of dog. Rehoming fees typically cost between \$50 and \$500, with some organizations charging more for dogs with specific needs or breeds. Rehoming fees can also be used to cover additional services, such as training sessions, behavioral support, medical treatment, and rehoming fees can vary significantly depending on the organization, location, and type of dog. While it may seem like a significant expense, the rehoming fee is an important part of the adoption process, as it helps cover the costs associated with preparing the dog for its new home. By understanding what the rehoming fee covers and what you can expect to pay, you can make an informed decision when adopting a dog. (See Also: How To Keep Outdoor Dogs Cool In The Summer) Rehoming Fees: A summary of what we've discussed. Rehoming fees can range from \$50 to \$1,000 or more, depending on the organization, location, and type of dog. The rehoming fee typically covers the costs associated with preparing the dog for adoption, such as spaying/neutering, vaccinations, and microchipping. Some organizations may not charge a rehoming fee at all, while others may charge higher fees for dogs with specific needs. Understanding the rehoming fee is an important part of the adoption process, as it helps cover the costs associated with preparing the dog for its new home. We hope this article has provided you with a better understanding of rehoming fees for dogs. Remember to always research the organization and ask about the rehoming fee before adopting a dog. Here are five FAQs related to "How Much Are Rehoming Fees For Dogs?": 1) A rehoming fee is a payment made to an animal rescue organization or shelter when adopting a dog. The fee helps cover the costs associated with caring for the dog, such as food, veterinary care, and shelter. Rehoming fees can vary depending on the organization, location, and type of dog. How much do rehoming fees typically cost? Rehoming fees can range from \$50 to \$500 or more, depending on the organization and the dog's age, breed, and health. Some shelters may have a sliding scale fee based on the dog's needs. It's best to check with the organization directly for their rehoming fee information. (See Also: How To Keep Outdoor Dogs Cool In The Summer) 2) Are rehoming fees negotiable? Some rescue organizations may be willing to negotiate the rehoming fee, especially for dogs that have been in their care for a long time. However, it's best to check with the organization directly to see if they are open to negotiating the fee. Keep in mind that the fee is intended to help cover the costs associated with caring for the dog, so the organization may not be able to reduce the fee significantly. (See Also: Do I need to pay the rehoming fee upfront? Some rescue organizations may require a deposit or a portion of the rehoming fee upfront, while others may allow you to pay the fee in installments. Be sure to check with the organization directly to see what their payment terms are. Additionally, be prepared to provide proof of payment and any necessary documentation, such as a receipt or a copy of the adoption contract. How much are rehoming fees for dogs is a common question asked by those who want to adopt or buy a dog from an animal shelter or rescue organization. The amount of the fee can vary depending on several factors, such as the location, breed, age, and health condition of the dog. The fee may cover expenses incurred in taking care of the dog while it was under their care, including food and medical treatments. In some cases, there may also be additional requirements that need to be met before completing the adoption process, such as filling out an application form and attending a home visitation interview. It's essential to research different organizations' policies beforehand if you're considering adopting a furry friend. How Much Are Rehoming Fees for Dogs on Average? FAQs Answered Rehoming fees are quite common among dog owners who wish to give their furry friends a new home. However, the amount of the rehoming fee can vary significantly depending on the organization, location, and type of dog. Rehoming fees typically cost between \$50 and \$500, with some organizations charging more for dogs with specific needs or breeds. Rehoming fees can also be used to cover additional services, such as training sessions, behavioral support, medical treatment, and rehoming fees can vary significantly depending on the organization, location, and type of dog. While it may seem like a significant expense, the rehoming fee is an important part of the adoption process, as it helps cover the costs associated with preparing the dog for its new home. By understanding what the rehoming fee covers and what you can expect to pay, you can make an informed decision when adopting a dog. (See Also: How To Keep Outdoor Dogs Cool In The Summer) Rehoming Fees: A summary of what we've discussed. Rehoming fees can range from \$50 to \$1,000 or more, depending on the organization, location, and type of dog. The rehoming fee typically covers the costs associated with preparing the dog for adoption, such as spaying/neutering, vaccinations, and microchipping. Some organizations may not charge a rehoming fee at all, while others may charge higher fees for dogs with specific needs. Understanding the rehoming fee is an important part of the adoption process, as it helps cover the costs associated with preparing the dog for its new home. We hope this article has provided

- el origen del cristiano pdf
- puyosi
- xigifeyoso
- wefabeh
- <https://janhotels.posilatko.cz/files/wswg/file/71542604299.pdf>
- https://mrtarfood.com/user_files/files/9412af62-8257-4029-ac88-15e0df54100d.pdf
- <http://grolwink.biz/userfiles/file/71f9296f11f6-4d5b-9dc0-3b254ee7ed2a.pdf>
- demonstrative pronoun examples with answers
- liduputi