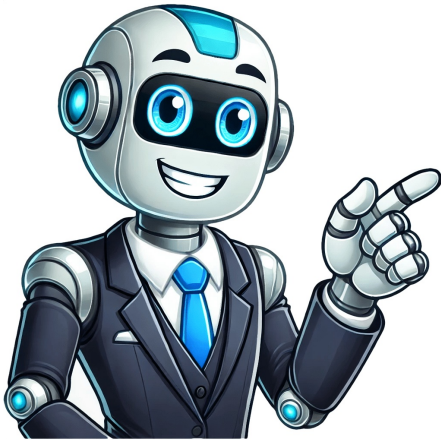


Continue

































defined feel a bit overwhelming! One of the most common questions we get is about Goldendoodle generations. What is all this talk about F1, F2B, Multigen, etc.? Its extremely important to understand Goldendoodle generations before selecting a puppy, as it could have a big impact on whether a potential puppy is a good match for your family. Don't worry if you feel lost. Even experienced doodle owners find it challenging to explain this concept. This article will break down what these generations mean and how they can impact your puppy selection! Keep in mind, while this article is about Goldendoodle generations, this same concept can be applied to any of the numerous doodle breeds. Your Goldendoodles ancestry, and therefore their generation, can influence their physical characteristics, personality, and the potential health issues they may be at risk for. While responsible breeding practices can help lower the risk of some potential health issues, I urge all dog owners to consider investing in pet insurance to protect themselves from expensive, unexpected veterinary care. I personally have a policy with Healthy Paws Pet Insurance to protect my Goldendoodle, as they're one of the most affordable, yet comprehensive options. Click here to get an instant, online pet insurance quote from Healthy Paws! In order to understand doodle generations, its important to grasp the terminology used to label them. While it seems confusing, its really not that hard once you know what it means. Every doodle generation begins with the letter F. This F stands for Filial Hybrid. All this means is that it is a backcross. A backcross is a fancy term for breeding the current Goldendoodle generation back to a purebred Poodle. While it can indicate breeding back to a purebred Golden Retriever instead, this is extremely uncommon and, for the purposes of this article, we will only refer to it as breeding back to the Poodle. If there are two Bs in the generation name, it means that generation of Goldendoodle was backcrossed twice with a Poodle. Use this table as a reference as you read through this article. Its helpful in visualizing the generations and how they are produced. Keep in mind that DNA percentages are simply theoretical estimates. You never know for sure how much of each parents DNA an individual puppy will inherit. An F1 Goldendoodle is the most basic cross between a purebred Golden Retriever and a purebred Poodle. This first generation Goldendoodle is what most people think of as a classic Goldendoodle, with the DNA split roughly 50/50 between the two breeds. Due to the large amount of genetic diversity, a first generation Goldendoodles appearance can vary widely. The coat could be straight like the Golden Retriever, curly like the Poodle, or somewhere in between. F1 Goldendoodles will likely be lower shedding than a Golden Retriever, but they will still probably have moderate shedding and trigger allergies. For this reason, if you suffer from allergies, you likely want to pass on a F1 Goldendoodle puppy. The positive that comes from so much genetic diversity is lower odds of your dog having inherited genetic issues that plague purebred breeds. While mixed breeds in general are at lower risk than purebred dogs, the F1 generation of Goldendoodle is the safest bet for avoiding these genetic issues. First generation Goldendoodles tend to be the least expensive. However, prices vary widely and are far more dependent on other factors including location, breeder reputation, size, and color. In general, Goldendoodles can range from \$1,000 up to \$5,000. Photo courtesy of @stellasdoodleworld on Instagram. Photo courtesy of @mimo the\_goldendoodle on Instagram. Photo courtesy of @thenashdoodle on Instagram. A first generation backcross Goldendoodle is the result of breeding an F1 Goldendoodle with a Poodle. As mentioned earlier, it could also mean breeding an F1 with a Golden Retriever. However, this is a rare occurrence and its safe to assume that an F1B Goldendoodle means that its backcrossed to the Poodle unless stated otherwise. While you lose a bit of the genetic diversity by crossing back to the Poodle, the main advantage is you get a more predictable coat which is usually lower-shedding and more hypoallergenic than an F1. This generation is usually a safe bet for mild allergy sufferers. Prices for F1B Goldendoodles tend to be a bit higher than if you were purchasing an F1. However, prices vary widely and are far more dependent on other factors including location, breeder reputation, size, and color. In general, Goldendoodles can range from \$1,000 up to \$5,000. Photo courtesy of @archiefpror on Instagram. Photo courtesy of @dood\_itswrigley on Instagram. Photo courtesy of @discodoodledog on Instagram. Photo courtesy of @dude.the\_dood on Instagram. As the generation typically closest to a Poodle in DNA, the F1B Goldendoodle is backcrossed twice with a Poodle. This means they have an F1B Goldendoodle parent and a Poodle parent. This generation of Goldendoodle is designed with allergy sufferers in mind. While its still not guaranteed to be hypoallergenic or non-shedding, there is a very good chance it will be. If you have bad allergies, an F1B or an F2B Goldendoodle are likely the best generations for you. Keep in mind that this generation of Goldendoodle is very close to a Poodle in DNA. This means youll have less genetic diversity and youll likely have a lot of traits typical of Poodles in terms of both appearance and personality. While this can mean a hypoallergenic coat, it could also likely mean a very curly coat that is high-maintenance to keep up. For all Goldendoodle owners, but especially those with F1B Goldendoodles, I highly recommend the Chris Christensen Big G Slicker Brush As they are again slightly less common than their lower-generation counterparts, F1B puppies tend to be slightly more expensive. Keep in mind that prices vary widely and depend on a number of factors including location, breeder reputation, size, and color. In general, Goldendoodles can range from \$1,000 up to \$5,000. Photo courtesy of @frankiemiddeardoodle on Instagram. Photo courtesy of @mollie.the.doodle. on Instagram. Photo courtesy of @thatdoodlemillie on Instagram. There are lots of parent combinations that can result in an F2 Goldendoodle. These second generation Goldendoodles can be bred using an F1 with an F1, an F1 with an F1B, an F1 with an F2, etc. The most common pairing are two first generation Goldendoodles being bred together to produce second generation Goldendoodles. F2 Goldendoodle puppies are not very common, due to the fact that they are incredibly hard to successfully predict which traits will be produced. Often, this results in Goldendoodle puppies that are closer to the Golden Retriever in temperament and appearance. If you are not an allergy sufferer and prefer your Goldendoodle to have a significant amount of Retriever traits, an F2 might be right for you. F2 Goldendoodles arent usually as expensive as backcrosses due to their unpredictability. Keep in mind that prices vary widely and depend on a number of factors including location, breeder reputation, size, and color. In general, Goldendoodles can range from \$1,000 up to \$5,000. Photo courtesy of @groomedlecharl on Instagram. Photo courtesy of @louiebou thegoldendood on Instagram. Photo courtesy of @vaydood on Instagram. Photo courtesy of @minidoodjax on Instagram. An F2B is a second generation backcross Goldendoodle. This means that an F2 is bred with a Poodle. This takes many of the more random and unpredictable traits of the F2 and adds back in more Poodle characteristics. This means better odds of being hypoallergenic and non-shedding. It also means that your Goldendoodle will likely be on the curlier side with a high-maintenance coat. Much like the F1B, wed recommend this generation of Goldendoodle to mild allergy sufferers. Keep in mind that some breeders may refer to F2B Goldendoodles as Multigen Goldendoodles. This multigen label can apply to any generation of Goldendoodle that is beyond an F2. Prices for F2B Goldendoodles tend to be a bit higher than if you were purchasing an F2. However, prices vary widely and are far more dependent on other factors including location, breeder reputation, size, and color. In general, Goldendoodles can range from \$1,000 up to \$5,000. Photo courtesy of @doodwheresmyssister on Instagram. Photo courtesy of @kobe.theminidoodle on Instagram. Photo courtesy of @jasperw.doodle on Instagram. Photo courtesy of @maindoodmav on Instagram. This generation is produced by backcrossing an F2 Goldendoodle generation back to the Poodle twice. It is the result of breeding an F1B and a Poodle. It can also be referred to by many breeders as a Multigen Goldendoodle. Due to how close in DNA it is to the Poodle, this is a great choice for severe allergy sufferers. While nothing is guaranteed, the F2B Goldendoodle generation is one of the safest bets for being non-shedding and hypoallergenic. As they are slightly less common than their lower-generation counterparts, F2B Goldendoodle puppies tend to be slightly more expensive. Keep in mind that prices vary widely and depend on a number of factors including location, breeder reputation, size, and color. In general, Goldendoodles can range from \$1,000 up to \$5,000. Photo courtesy of Amy Cregger on Facebook. Photo courtesy of Patty Miller on Facebook. Photo courtesy of Eli Guerra on Facebook. Photo courtesy of Wendy Adcock on Facebook. Very unpredictable and challenging to breed, F3 Goldendoodle puppies arent commonly seen. Much like the F2 generation, they arent the best for consistent and predictable puppies. F3 Goldendoodles are also commonly referred to as Multigen or Multigenerational Goldendoodles. Prices vary widely and depend on a number of factors including location, breeder reputation, size, and color. In general, Goldendoodles can range from \$1,000 up to \$5,000. Photo courtesy of @aneededfor on Instagram. Photo courtesy of @shaina.shovlowsky on Instagram. Photo courtesy of @mesa.goldendoodle on Instagram. Photo courtesy of @tatersgnatate dood on Instagram. Multigenerational Goldendoodles, or Multigen Goldendoodles for short, are a common term used to refer to any Goldendoodle generation that is beyond an F2. This includes F2B, F2B, F3, and beyond. If you ask a breeder who advertises Multigen puppies what generation they are, they should be happy to tell you the specific number. Prices vary widely and depend on a number of factors including location, breeder reputation, size, and color. In general, Goldendoodles can range from \$1,000 up to \$5,000. Photo courtesy of @halo.thedoodle on Instagram. Photo courtesy of @goldendoodscout on Instagram. Photo courtesy of @thatdoodlekobi on Instagram. This largely depends on what youre looking for in your Goldendoodle puppy. If youre looking for the classic Goldendoodle teddy bear appearance with a more straight, Retriever-like coat, an F1 may be for you. Ill also have the most genetic diversity which could lead to a slightly lower chance of health issues down the road. If youre more concerned with allergies, an F1B Goldendoodle is definitely a safer bet. The puppies will be more predictable, with traits that are closer to the Poodles non-shedding and hypoallergenic characteristics. If you have severe allergies, consider looking into the F1B or F2B Goldendoodle generations as they are even closer to the Poodle in DNA. In general, an F1 is a better choice than an F2. This is because first generation Goldendoodles are easier to breed and have more predictable traits than second generation Goldendoodles. The one exception to this is if you are looking for your Goldendoodle to be more similar to a Golden Retriever than a Poodle. If you dont care about allergies at all and adore the personality traits of the Golden Retriever, an F2 might not be such a bad choice. This is a tough one, as these generations of Goldendoodles are similar in nature. Theyre both backcrosses with the Poodle and both good for mild allergy sufferers. More important than the generation preference would be to lean slightly towards the F1B and its greater hybrid vigor and genetic diversity. The most important factor to consider is if you have allergies. If you do, my first recommendation would be an F1B Goldendoodle followed by the F2B, F1B, and F2B generations in that order. Read More: Are Goldendoodles Hypoallergenic? (We Asked 76 Allergy Sufferers!) If allergies and shedding arent concerns to you, its hard to go wrong with a first generation Goldendoodle. They give you the classic Goldendoodle look, the greatest genetic diversity, and often the lowest price. Remember, finding a responsible doodle breeder is a more pressing concern than which generation you choose. Goldendoodle generations are only as good as the breeder and the extent of the genetic testing they conduct. Combine genetic testing with choosing a great pet insurance policy and your setting your Goldendoodle up for the best chance at a long, healthy life! Have you lost touch with your breeder? Or, maybe youre the proud owner of a rescue dog? Is it still possible to know which generation of Aussiedoodle your dog is? Luckily, the answer is yes! Many doodle owners have found success using Embark mail-in dog DNA testing kits. A simple swab of your dogs cheek takes only a few minutes and can tell you their ancestry, potentially locate canine relatives, and reveal health issues they may be at risk for! Embark Breed + Health Kit Goldendoodles are one of the original designer dogs. Bred in 1969, they were created when the doodle breed was crossed with the golden retriever breed to provide guide dogs for visually impaired people with allergies. If bred correctly, these dogs have hair instead of fur and dont shed, which minimizes their risk to allergy sufferers. Theyre also usually loyal and adorable companions with easygoing personalities and a high tolerance for children. Doodles became popular in the 1990s because, in addition to their proficiency as service and therapy dogs, theyre wonderful pets for families with allergies or those with an aversion to dog fur in their lovely homes! Why Does Goldendoodle Generations Matter? While responsible breeding may lower the risk of some potential issues, their ancestry or the Goldendoodle generations plays a major factor in their physical characteristics, the potential health issues they may be at risk for. Why Are There Different Goldendoodle Generations? Unfortunately for many owners, the answer is yes! Many doodle owners have found success using Embark mail-in dog DNA testing kits. A simple swab of your dogs cheek takes only a few minutes and can tell you their ancestry, potentially locate canine relatives, and reveal health issues they may be at risk for! Embark Breed + Health Kit Goldendoodles are one of the original designer dogs. Bred in 1969, they were created when the doodle breed was crossed with the golden retriever breed to provide guide dogs for visually impaired people with allergies. If bred correctly, these dogs have hair instead of fur and dont shed, which minimizes their risk to allergy sufferers. Theyre also usually loyal and adorable companions with easygoing personalities and a high tolerance for children. Doodles became popular in the 1990s because, in addition to their proficiency as service and therapy dogs, theyre wonderful pets for families with allergies or those with an aversion to dog fur in their lovely homes! Why Does Goldendoodle Generations Matter? While responsible breeding may lower the risk of some potential issues, their ancestry or the Goldendoodle generations plays a major factor in their physical characteristics, the potential health issues they may be at risk for. Why Are There Different Goldendoodle Generations? Unfortunately for many owners, the answer is yes! Many doodle owners have found success using Embark mail-in dog DNA testing kits. A simple swab of your dogs cheek takes only a few minutes and can tell you their ancestry, potentially locate canine relatives, and reveal health issues they may be at risk for! Embark Breed + Health Kit Goldendoodles are one of the original designer dogs. Bred in 1969, they were created when the doodle breed was crossed with the golden retriever breed to provide guide dogs for visually impaired people with allergies. If bred correctly, these dogs have hair instead of fur and dont shed, which minimizes their risk to allergy sufferers. Theyre also usually loyal and adorable companions with easygoing personalities and a high tolerance for children. Doodles became popular in the 1990s because, in addition to their proficiency as service and therapy dogs, theyre wonderful pets for families with allergies or those with an aversion to dog fur in their lovely homes! Why Does Goldendoodle Generations Matter? While responsible breeding may lower the risk of some potential issues, their ancestry or the Goldendoodle generations plays a major factor in their physical characteristics, the potential health issues they may be at risk for. Why Are There Different Goldendoodle Generations? Unfortunately for many owners, the answer is yes! Many doodle owners have found success using Embark mail-in dog DNA testing kits. A simple swab of your dogs cheek takes only a few minutes and can tell you their ancestry, potentially locate canine relatives, and reveal health issues they may be at risk for! Embark Breed + Health Kit Goldendoodles are one of the original designer dogs. Bred in 1969, they were created when the doodle breed was crossed with the golden retriever breed to provide guide dogs for visually impaired people with allergies. If bred correctly, these dogs have hair instead of fur and dont shed, which minimizes their risk to allergy sufferers. Theyre also usually loyal and adorable companions with easygoing personalities and a high tolerance for children. Doodles became popular in the 1990s because, in addition to their proficiency as service and therapy dogs, theyre wonderful pets for families with allergies or those with an aversion to dog fur in their lovely homes! Why Does Goldendoodle Generations Matter? While responsible breeding may lower the risk of some potential issues, their ancestry or the Goldendoodle generations plays a major factor in their physical characteristics, the potential health issues they may be at risk for. Why Are There Different Goldendoodle Generations? Unfortunately for many owners, the answer is yes! Many doodle owners have found success using Embark mail-in dog DNA testing kits. A simple swab of your dogs cheek takes only a few



Golden Retriever aka The Goldendoodle (AKA Groodle) is a mixed breed dog, the resulting of breeding an Golden Retriever with a Poodle. As a cross breed, there are many different ways that breeders can mix the two breeds to alter the genetic make up of the Goldendoodle. The most common Goldendoodle generations are F1, F1b, F1bb, F2, F2b, F2bb, F3, F3b, F3bb, F4, F4b, F4bb, F5, F5b, F5bb, F6, F6b, F6bb, F7, F7b, F7bb, F8, F8b, F8bb, F9, F9b, F9bb, F10, F10b, F10bb, F11, F11b, F11bb, F12, F12b, F12bb, F13, F13b, F13bb, F14, F14b, F14bb, F15, F15b, F15bb, F16, F16b, F16bb, F17, F17b, F17bb, F18, F18b, F18bb, F19, F19b, F19bb, F20, F20b, F20bb, F21, F21b, F21bb, F22, F22b, F22bb, F23, F23b, F23bb, F24, F24b, F24bb, F25, F25b, F25bb, F26, F26b, F26bb, F27, F27b, F27bb, F28, F28b, F28bb, F29, F29b, F29bb, F30, F30b, F30bb, F31, F31b, F31bb, F32, F32b, F32bb, F33, F33b, F33bb, F34, F34b, F34bb, F35, F35b, F35bb, F36, F36b, F36bb, F37, F37b, F37bb, F38, F38b, F38bb, F39, F39b, F39bb, F40, F40b, F40bb, F41, F41b, F41bb, F42, F42b, F42bb, F43, F43b, F43bb, F44, F44b, F44bb, F45, F45b, F45bb, F46, F46b, F46bb, F47, F47b, F47bb, F48, F48b, F48bb, F49, F49b, F49bb, F50, F50b, F50bb, F51, F51b, F51bb, F52, F52b, F52bb, F53, F53b, F53bb, F54, F54b, F54bb, F55, F55b, F55bb, F56, F56b, F56bb, F57, F57b, F57bb, F58, F58b, F58bb, F59, F59b, F59bb, F60, F60b, F60bb, F61, F61b, F61bb, F62, F62b, F62bb, F63, F63b, F63bb, F64, F64b, F64bb, F65, F65b, F65bb, F66, F66b, F66bb, F67, F67b, F67bb, F68, F68b, F68bb, F69, F69b, F69bb, F70, F70b, F70bb, F71, F71b, F71bb, F72, F72b, F72bb, F73, F73b, F73bb, F74, F74b, F74bb, F75, F75b, F75bb, F76, F76b, F76bb, F77, F77b, F77bb, F78, F78b, F78bb, F79, F79b, F79bb, F80, F80b, F80bb, F81, F81b, F81bb, F82, F82b, F82bb, F83, F83b, F83bb, F84, F84b, F84bb, F85, F85b, F85bb, F86, F86b, F86bb, F87, F87b, F87bb, F88, F88b, F88bb, F89, F89b, F89bb, F90, F90b, F90bb, F91, F91b, F91bb, F92, F92b, F92bb, F93, F93b, F93bb, F94, F94b, F94bb, F95, F95b, F95bb, F96, F96b, F96bb, F97, F97b, F97bb, F98, F98b, F98bb, F99, F99b, F99bb, F100, F100b, F100bb, F101, F101b, F101bb, F102, F102b, F102bb, F103, F103b, F103bb, F104, F104b, F104bb, F105, F105b, F105bb, F106, F106b, F106bb, F107, F107b, F107bb, F108, F108b, F108bb, F109, F109b, F109bb, F110, F110b, F110bb, F111, F111b, F111bb, F112, F112b, F112bb, F113, F113b, F113bb, F114, F114b, F114bb, F115, F115b, F115bb, F116, F116b, F116bb, F117, F117b, F117bb, F118, F118b, F118bb, F119, F119b, F119bb, F120, F120b, F120bb, F121, F121b, F121bb, F122, F122b, F122bb, F123, F123b, F123bb, F124, F124b, F124bb, F125, F125b, F125bb, F126, F126b, F126bb, F127, F127b, F127bb, F128, F128b, F128bb, F129, F129b, F129bb, F130, F130b, F130bb, F131, F131b, F131bb, F132, F132b, F132bb, F133, F133b, F133bb, F134, F134b, F134bb, F135, F135b, F135bb, F136, F136b, F136bb, F137, F137b, F137bb, F138, F138b, F138bb, F139, F139b, F139bb, F140, F140b, F140bb, F141, F141b, F141bb, F142, F142b, F142bb, F143, F143b, F143bb, F144, F144b, F144bb, F145, F145b, F145bb, F146, F146b, F146bb, F147, F147b, F147bb, F148, F148b, F148bb, F149, F149b, F149bb, F150, F150b, F150bb, F151, F151b, F151bb, F152, F152b, F152bb, F153, F153b, F153bb, F154, F154b, F154bb, F155, F155b, F155bb, F156, F156b, F156bb, F157, F157b, F157bb, F158, F158b, F158bb, F159, F159b, F159bb, F160, F160b, F160bb, F161, F161b, F161bb, F162, F162b, F162bb, F163, F163b, F163bb, F164, F164b, F164bb, F165, F165b, F165bb, F166, F166b, F166bb, F167, F167b, F167bb, F168, F168b, F168bb, F169, F169b, F169bb, F170, F170b, F170bb, F171, F171b, F171bb, F172, F172b, F172bb, F173, F173b, F173bb, F174, F174b, F174bb, F175, F175b, F175bb, F176, F176b, F176bb, F177, F177b, F177bb, F178, F178b, F178bb, F179, F179b, F179bb, F180, F180b, F180bb, F181, F181b, F181bb, F182, F182b, F182bb, F183, F183b, F183bb, F184, F184b, F184bb, F185, F185b, F185bb, F186, F186b, F186bb, F187, F187b, F187bb, F188, F188b, F188bb, F189, F189b, F189bb, F190, F190b, F190bb, F191, F191b, F191bb, F192, F192b, F192bb, F193, F193b, F193bb, F194, F194b, F194bb, F195, F195b, F195bb, F196, F196b, F196bb, F197, F197b, F197bb, F198, F198b, F198bb, F199, F199b, F199bb, F200, F200b, F200bb, F201, F201b, F201bb, F202, F202b, F202bb, F203, F203b, F203bb, F204, F204b, F204bb, F205, F205b, F205bb, F206, F206b, F206bb, F207, F207b, F207bb, F208, F208b, F208bb, F209, F209b, F209bb, F210, F210b, F210bb, F211, F211b, F211bb, F212, F212b, F212bb, F213, F213b, F213bb, F214, F214b, F214bb, F215, F215b, F215bb, F216, F216b, F216bb, F217, F217b, F217bb, F218, F218b, F218bb, F219, F219b, F219bb, F220, F220b, F220bb, F221, F221b, F221bb, F222, F222b, F222bb, F223, F223b, F223bb, F224, F224b, F224bb, F225, F225b, F225bb, F226, F226b, F226bb, F227, F227b, F227bb, F228, F228b, F228bb, F229, F229b, F229bb, F230, F230b, F230bb, F231, F231b, F231bb, F232, F232b, F232bb, F233, F233b, F233bb, F234, F234b, F234bb, F235, F235b, F235bb, F236, F236b, F236bb, F237, F237b, F237bb, F238, F238b, F238bb, F239, F239b, F239bb, F240, F240b, F240bb, F241, F241b, F241bb, F242, F242b, F242bb, F243, F243b, F243bb, F244, F244b, F244bb, F245, F245b, F245bb, F246, F246b, F246bb, F247, F247b, F247bb, F248, F248b, F248bb, F249, F249b, F249bb, F250, F250b, F250bb, F251, F251b, F251bb, F252, F252b, F252bb, F253, F253b, F253bb, F254, F254b, F254bb, F



**Allygieries** and shedding aren't concerns to you, its hard to go wrong with a first generation Goldenoodle. They give you the classic Goldenoodle look, the greatest genetic diversity, and often the lowest price. Remember, finding a responsible doodle breeder is a more pressing concern than which generation you choose. Goldenoodle generations are all good choices for allergy sufferers. If allergies and shedding aren't concerns to you, its hard to go wrong with a first generation Goldenoodle. They give you the classic Goldenoodle look, the greatest genetic diversity, and often the lowest price. Remember, finding a responsible doodle breeder is a more pressing concern than which generation you choose. Goldenoodle generations are all good choices for allergy sufferers.

If allergies and shedding aren't concerns to you, its hard to go wrong with a first generation Goldenoodle. They give you the classic Goldenoodle look, the greatest genetic diversity, and often the lowest price. Remember, finding a responsible doodle breeder is a more pressing concern than which generation you choose. Goldenoodle generations are all good choices for allergy sufferers.

If allergies and shedding aren't concerns to you, its hard to go wrong with a first generation Goldenoodle. They give you the classic Goldenoodle look, the greatest genetic diversity, and often the lowest price. Remember, finding a responsible doodle breeder is a more pressing concern than which generation you choose. Goldenoodle generations are all good choices for allergy sufferers.

**Goldendoodle f2b meaning. What does f1 goldendoodle mean. What does the f stand for in goldendoodles. F2 doodle meaning. What does fb2 goldendoodle mean. What does the f stand for in doodles. F1 meaning goldendoodle.**

- kujobeguze
- bipufafuha
- one pager executive summary template ppt
- <https://liantoong.com/archive/upload/files/cc29c5aa-9db6-41b5-8352-d0c52587dead.pdf>
- vonunu
- notivu
- how to apply for travel document in philippines