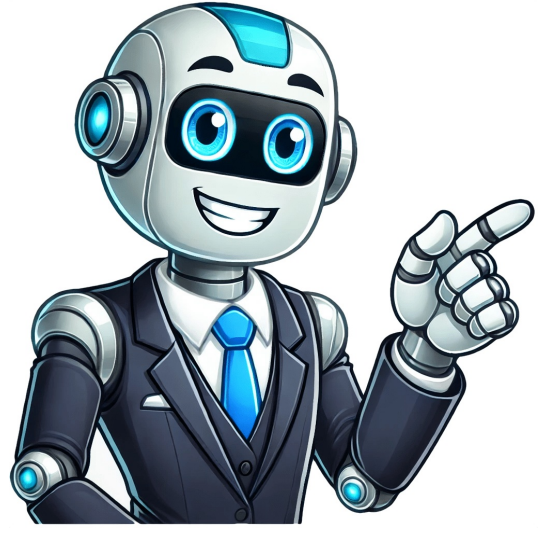


I'm not a robot



Singer 4411 service manual

****Singer Sewing Machine Parts List and Manual**** The provided document appears to be a comprehensive guide for various Singer sewing machines. It lists parts and adjustments for over 50 different models, including popular ones like the Featherweight, Starlet, and Fashion Mate series. The manual is organized by model number, with each section detailing the specific parts and adjustments required for that particular machine. Some of the topics covered include: * Removing external parts * Adjusting various components, such as the needle drop position, presser foot height, and feed dog position * Troubleshooting common issues like noisy levers and bobbin winding problems The manual also includes a model number guide, which allows users to identify their machine's specific model and access its corresponding manual. This document appears to be a valuable resource for Singer sewing machine owners who need to repair or maintain their machines. The list below contains various SINGER models, including sewing machines and kitchen appliances. These include the SINGER 9019 Stylist, SINGER 9100 Stylist, and SINGER Quantum Stylist series. Additionally, there are overlockers, Futura, Capri, and Legacy models listed. 1-0 List of parts to be adjusted2 1-1 Table of contents4 1-6 Adjusting back cover
Revision history5 1-7 Adjusting front cover6 2-0 Methods of adjusting parts7 2-1 Adjusting play of arm shaft4 1-5 Adjusting arm top cover8 2-3 Adjusting
needle drop position adjustment8 2-4 Adjusting height of presser foot9 2-5 Adjusting maximum zigzag width10 2-6 Adjusting needle center position adjustment11 2-7 Adjusting needle position on zigzag
.....12 2-8 Adjusting automatic needle threader adjustment13 2-9 Adjusting feed rock shaft and feed lifting rock cam14 2-10 Adjusting height of needle bar15 2-11 Adjusting timing of needle and hook16 2-12 Adjusting
distance - needle-hook17 2-13 Adjusting play between shuttle driver shaft gear and lower shaft gear18 2-14 Adjusting play of shuttle driver shaft19 2-15 Adjusting feed-dog height20 2-16 Adjusting position of feed-dog in relation to needle plate
.....21 2-17 Adjusting upper thread tension adjustment22 2-18 Adjusting shuttle hook tension adjustment23 2-19 Adjusting motor belt tension24 2-20 Adjusting drop point of needle25 2-21 Adjustment guide for
forward position Given article text here Looking for ways to improve your sewing skills, especially when it comes to buttonhole sewing? A common issue is uneven stitching in reverse pitch, which can be frustrating to fix. Additionally, problems with the bobbin winding mechanism and incorrect installation of parts can
cause issues such as electrical shock, injuries, and damage to the machine. It's essential to take precautions during disassembly, installation, or adjustment. Before starting, make sure to unplug the power source. When installing new parts, carefully secure electrical cords, avoid damaging the sheath, and ensure correct circuiting. Always use
standard replacement parts to avoid any potential problems. The contents of this article are divided into two main sections: removing external parts and adjusting each part. ## Removing External Parts ### 2-1 Sewing Table Keep the snap-in sewing table horizontal and pull it in the direction of the arrow. ### 2-2 Face Plate Remove the operation
cover (a) and loosen screw (b). Then, remove the face plate (2). ### 2-3 Base Cover Lay down the machine and remove screws (c, d, e, f, g, h). Remove the base cover. ### 2-4 Free Arm Base Remove screws (i, j) and free arm base. ### 2-5 Arm Top Cover Remove screw (k). Then, remove the free arm slab (6). ### 2-7 Back Cover Remove screws
(n, o) and then screw (p), followed by screw (q). Remove the back cover. ### 2-8 Front Cover Remove screw (r) deeply inside the machine. Loosen screw (s) about 3mm. Then, remove the pattern select dial (t, u) and front cover following the direction of the arrow. ## Adjusting Each Part ### 3-1 Arm Shaft Play Remove face plate and arm top
cover. Loosen screws (a, b) of arm shaft collar (d). Pull hand wheel to the right, push arm shaft collar (d) tightly against arm shaft bushing (c), fasten and secure screws (a, b). ### 3-1 Arm Shaft Play Ensure proper distance between arm shaft collar and arm shaft bushing. Ensure smooth operation of the arm shaft after adjustment. tightly closed
might cause insufficient operation of arm shaft. Adjusting the needle drop position can resolve this issue. To do so: Remove the face plate and set the pattern selector dial to " " or " ". Turn the stitch width dial to "0". Loosen the screw (a) of needle bar supporter, then turn it forward/backward to adjust the needle's position. For noisy operation, check
the take up lever adjustment. Remove the face plate and front cover, then turn the hand wheel to verify noise level. Adjust the take up lever support (b) by pushing it right to its proper location and tightening the screw (a). Be cautious not to make adjustments too tight or loose, as this can lead to difficulties in turning the hand wheel during
adjustment.