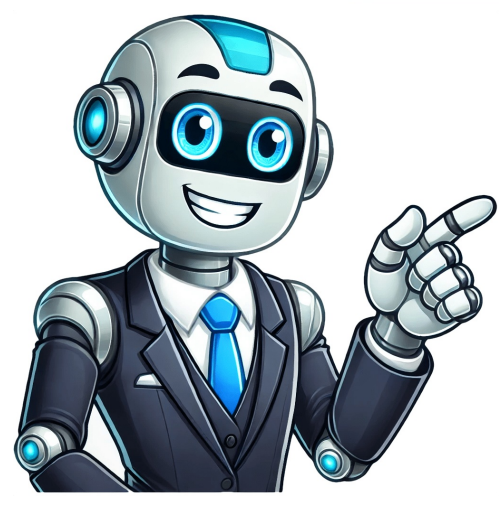


Click to verify



























Accurately calculate field area measurements, measure distances, and plan efficient routes with GPS maps.Many happy users have downloaded our app and are enjoying it.Our app is a top choice for GPS area measurement, helping users easily measure field areas & distances using gps maps.Rated 4.8 stars, this app is ideal for accurate field and area measurements using GPS.Measure fields, and distances with GPS area measurement app, and save your data. Discover nearby places and plan routes with the location finder. Get your live location's address, latitude, and longitude instantly. Capture images with date, time, and address stamps using the GPS Camera. Track your travel with the speedometer for speed and distance. Use various compass modes for enhanced navigation.Discover how GPS Field Area Measurement makes land measurement and navigation effortless.Easily calculate and measure the area of any field, farm, lawn, or plot with accurate GPS measurements with our GPS field area calculator.Easily measure the distance between two points on the GPS map with our user-friendly tool. Ideal for measuring fencing, roads, or paths.Draw on the map to easily measure areas. Ideal for calculating irregular shapes, whether for farming, construction, or land assessments.Navigate with voice guidance and find nearby places like ATMs and fuel stations. Capture photos with stamps for easy location tracking.Find and plan your route efficiently, optimizing travel paths to ensure you take the best route for the fastest and most convenient journey.Sync your data instantly to keep all information updated and easily accessible, ensuring a smooth and uninterrupted navigation experience.Quickly explore the app's features and see how easily it works.Step-by-Step Guide to Using the GPS Field Area Measurement AppOpen the app, tap "Create New," and select Measure Field, Distance, or Marker. The app will calculate the field or area automatically.Create measurement groups and assign colors to them for easy identification. You can easily add, hide, or delete groups as needed.Add custom stamps with date, time, location, and notes to your photos, ensuring important details are recorded for easy reference.Easily find and plan the best route with GPS maps, ensuring a quicker, more convenient journey to your destination.With just a single click, you can instantly send your real-time location to anyone, making it easier than ever to share where you are.Discover why GPS Field Area Measurement is your go-to app for accurate measurements.01Effortlessly calculate and measure land areas using GPS technology. Ideal for farming, construction, property assessments, land surveying, real estate planning, and environmental monitoring.02Quickly measure the distance between two points on the GPS map, perfect for tracking roads, paths, fences, property boundaries, planning new structures, or mapping land for development.03Plan your route with voice-guided GPS to find nearby places like ATMs, fuel stations, hospitals, restaurants, parking, restrooms, and grocery stores for a smoother, stress-free journey.Easily measure fields, distances, and place markers with real-time calculations. Plan routes, capture location-stamped photos, and sync your data for secure access and organization. Everything you need in one app to make your measurements accurate and your navigation effortless.See how the GPS Field Area Measurement app is changing the way users measure and navigate.This GPS Field Area Measurement app is perfect for calculating the area of my farm fields. The distance measure and map field measurement features make land planning easy, accurate, and efficient for my daily tasks!The GPS field area calculator helps me measure land accurately, and the route planner ensures I find the best paths for development. The GPS navigation and photo stamps are a great addition, making my work more organized!The GPS navigation with voice guidance is spot-on, and I can quickly find nearby ATMs and fuel stations. The sync feature ensures all my route data and measurements are always up to date, making every trip hassle free! Land Distance Area Calculator is useful to calculate GPS area or GPS distance with great accuracy.Amazing user interaction experience and also you can delete the markers with a tap on it if it is placed at the wrong place.Fields area Measure is a smart tool for measuring areas on the map. Once you place your points on the map and then calculate area between all point. you can also calculate total Area of ant Route.Fields Area Measurement is useful to calculate GPS area or GPS distance with great accuracy. There two way to measure any GPS area or distanceWith Land Distance Area Calculator you can also save the Distance and Areas,FEATURES:- Fast area/distance Mapping.- Smart Marker Mode for super accurate pin placement.- Measurement Saving and editing- Measurement Unit Changing Availability.- Normal, Satellite, and Hybrid modesFor more information .Privacy Policy . of Use . - Changed UX of the app for better user navigation. - Added new functionality of GeoJSON & KML Export & import.- Added Area Subtraction feature. Hi iam using XR phone. Yesterday installed this app but Not working properly and iam purchased add free version it's also not working Wonderful app with amazing interface. Not working or not showing results properly The developer, Nalin Savaliya, indicated that the app's privacy practices may include handling of data as described below. For more information, see the developer's privacy policy. The following data may be used to track you across apps and websites owned by other companies: The following data may be collected but it is not linked to your identity: Identifiers Usage Data Diagnostics Privacy practices may vary based on, for example, the features you use or your age. Learn More GPS Area Calculator - Accurate Land Measurement & Mapping ToolEffortlessly measure land areas, plots, fields, and distances with GPS Area Calculator, your all-in-one area measurement solution. Whether you're a farmer, surveyor, real estate agent, or outdoor enthusiast, our app provides accurate and reliable measurements with just a few taps.Why Choose GPS Area Calculator? Accurate Area Measurement: Calculate land size precisely using advanced GPS technology.Easy Mapping Tools: Draw on maps to measure irregular and complex shapes with ease.Distance Measurement: Measure distances between multiple points quickly and accurately. Multiple Units Supported: Choose from square meters, acres, hectares, square feet, and more. Save & Share Results: Export your measurements and share them as images or files effortlessly.Offline Mode: Measure areas even without an internet connection.User-Friendly Interface: Simple, intuitive, and designed for everyone. Versatile Usage: Ideal for farming, surveying, real estate, property management, and outdoor activities.How It Works:Select Your Measurement Mode: Choose Area Measurement or Distance Measurement.Draw or Mark Points: Tap on the map to outline the area or draw lines to measure distance.Instant Calculation: Get precise measurements instantly, displayed in your preferred unit.Save & Share: Save your measurements for future reference or share them via various platforms.Perfect For:Farmers & Agricultural Experts: Measure crop fields, paddocks, and plots for planning and monitoring.Surveyors & Engineers: Effortlessly calculate land area and distance for professional projects.Real Estate Agents: Accurately measure properties and land boundaries.Hikers & Outdoor Enthusiasts: Plan and measure hiking trails and camping sites.Urban Planners & Land Developers: Visualize and calculate land for development purposes. Jun 13, 2025 Version 1.0.9 The developer, Muhammad Asad Khan, indicated that the app's privacy practices may include handling of data as described below. For more information, see the developer's privacy policy. The following data may be collected and linked to your identity: The following data may be collected but it is not linked to your identity: Identifiers Usage Data Diagnostics Privacy practices may vary, for example, the features you use or your age. Learn More What is GPS ?GPS full form is Global Positioning System (GPS).It is a space-based satellite navigation system that provides location and time information in all weather conditions, anywhere on or near the Earth where there is an unobstructed line of sight to four or more GPS satellites. The system provides critical capabilities to military, civil and commercial users around the world. It is maintained by the United States government and is freely accessible to anyone with a GPS receiver. See why users love Mapulator! Read reviews and discover why it's the best measurement app. "Best App. Very useful for construction projects" AM "Worked for Abu Dhabi Town Planning department" Sir Hamad "Great Tool, My roofer job is easy now, thanks" Gamita "Absolutely perfect to measure land parcels. Easy to use." Chad Maloney "Simply the best amongst the rest. Tried tested and certified" Nick Otieno "This app is really precise and accurate I use it for all my Landscaping needs for estimating my invoices" "The best app in this category. I'm a civil engineer and I use this app in daily basis which saves me lot of time and money. I have purchased yearly subscription which is most worth money" "Great tool, I spread fertilizer and seed on cattle fields and this is a great tool to confirm the exact amount of acres I am spreading on." "Great Product, I've been looking for an app to help define a property line. This app settled it in 10 minutes. Highly recommend." "Best business decision. I have tried many of these apps and found this one the best. It's easy to use, and most importantly it is accurate. Thanks, developer, for creating a great app. Continue to keep being great." "Excellent App. It was an excellent app for real estate industry." "Farming, This app has helped me with many projects. I would recommend it to anyone." "Land Owner, Works Great, use it all the time!! Hunting, looking at land or mapping pastures" "Best app I've used for fencing. I'm a fencing contractor and mapping 1000's of meters is so easy along with marking out fields. Best app by far and easy to use" "Great app. I really like this app, it does what it claims very well. I am a farmer and use it all the time to calculate acreage and plan irrigation." Note : Click on MAP to select points, Select 2 or more points, Double click to finish and calculate Area. Unit Area Hectares 0 SQ KMs 0 SQ Miles 0 SQ Meters 0 SQ Yards 0 SQ Feet 0 GPS Area Calculator - Accurate Land Measurement & Mapping ToolEffortlessly measure land areas, plots, fields, and distances with GPS Area Calculator, your all-in-one area measurement solution. Whether you're a farmer, surveyor, real estate agent, or outdoor enthusiast, our app provides accurate and reliable measurements with just a few taps.Why Choose GPS Area Calculator? Accurate Area Measurement: Calculate land size precisely using advanced GPS technology.Easy Mapping Tools: Draw on maps to measure irregular and complex shapes with ease.Distance Measurement: Measure distances between multiple points quickly and accurately. Multiple Units Supported: Choose from square meters, acres, hectares, square feet, and more. Save & Share Results: Export your measurements and share them as images or files effortlessly.Offline Mode: Measure areas even without an internet connection.User-Friendly Interface: Simple, intuitive, and designed for everyone. Versatile Usage: Ideal for farming, surveying, real estate, property management, and outdoor activities.How It Works:Select Your Measurement Mode: Choose Area Measurement or Distance Measurement.Draw or Mark Points: Tap on the map to outline the area or draw lines to measure distance.Instant Calculation: Get precise measurements instantly, displayed in your preferred unit.Save & Share: Save your measurements for future reference or share them via various platforms.Perfect For:Farmers & Agricultural Experts: Measure crop fields, paddocks, and plots for planning and monitoring.Surveyors & Engineers: Effortlessly calculate land area and distance for professional projects.Real Estate Agents: Accurately measure properties and land boundaries.Hikers & Outdoor Enthusiasts: Plan and measure hiking trails and camping sites.Urban Planners & Land Developers: Visualize and calculate land for development purposes. Jun 13, 2025 Version 1.0.9 The developer, Muhammad Asad Khan, indicated that the app's privacy practices may include handling of data as described below. For more information, see the developer's privacy policy. The following data may be used to track you across apps and websites owned by other companies: The following data may be collected and linked to your identity: The following data may be collected but it is not linked to your identity: Identifiers Usage Data Diagnostics Privacy practices may vary, for example, based on the features you use or your age. Learn More