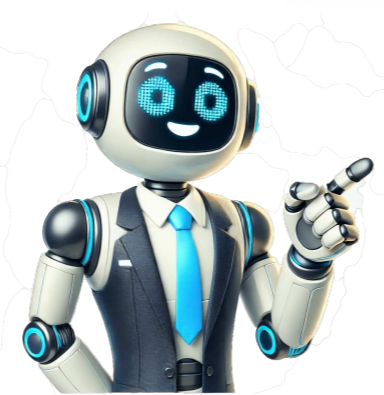


Click to verify



Ford Edge is one of the best compact SUVs on the used car market, but only if you can pick a problem-free model year. There have been some minor and some severe issues with certain model years, so its always useful to be aware of the ratings, common problems and recalls. Thats what our team will help you do in this guide on the best and worst Ford Edge years, as we dig deep into NHTSA reports and driver reviews to showcase Ford Edge reliability ratings. Well go through each of the best and worst years with an in-depth analysis of the problems to help you buy the best-rated Edge model regardless of its generation. Ford Edge problemsWorst Ford Edge yearsBest Ford Edge yearsWhy you can trust REREVEs advice on which car model years to avoid: Our car experts look at official data, ask real drivers what they think, and talk to experienced mechanics to make sure our list is useful. This reliable info can make buying a car easier for you. Want to know how we do it? Find out more about our research methodology. While evaluating the best and worst Ford Edge years, our team used information from reputable and trusted sources. We first focused on NHTSA complaints and details on official recalls issued by Ford as we wanted to see which problem caused them. On top of that, we also wanted to hear first-hand driving impressions and reliability reviews provided by Ford Edge owners, both past and present. To wrap things up, we used some information from popular forum threads, but only if we could find supporting statements for those. With all that considered, heres a list of both the best and worst Ford Edge years: Ford Edge GenerationBest Ford Edge YearsWorst Ford Edge Years1st generation2009, 2014/2007, 2008, 2010, 2011, 2012, 2013/2nd generation2023N/A Despite being a decent daily commuter car, the Ford Edge has had some model-specific issues out of which several have been severe including engine faults. So, well go through all of those to help you avoid the model years affected by those issues. The clicking noise emanating from the wheel area was widespread for the 2007 to 2014 models. They usually begin after 75,000 miles and are mainly attributed to being caused by loose plastic cladding or one with too much space between it and the wheel. Drivers mostly resolved the issue by replacing the plastic cladding. The Ford Edge has occasional airbag problems, but none were more remarkable than that of the 2016-2017 models. Before then, the SUV had faced an airbag issue with its 2007-2008 units which they recalled in January 2017 and offered free passenger frontal airbag inflator replacements for drivers willing to continue with the vehicle. That of 2016-2017 failed the Federal Motor Vehicle Safety Standard (FMVSS) requirements and was outright labeled unsafe. The cause of the airbag issue was the quick degrading of the propellant in the inflators due to changing temperatures and humidity which sometimes triggered the SRS light. Therefore, when engaged, the airbag would detach from its assembly or not fully inflate, leaving the driver with higher risks of harm. 2007, 2008, and 2011 Ford Edge were famous for constantly sliding windshield seals. The adhesive used to put it in place was bad and had to be frequently repaired as it kept happening even after being reinforced with a new seal some months before. In extreme cases, rainwater leaked into the SUV and soaked the floor and other items, opening opportunities for more problems. The windshield had to be removed completely for the foam seal to be replaced. After 80,000 miles, the 2007 and 2008 Ford Edge models usually had transmission issues which sometimes left the driver suddenly immobile in the middle of a ride. The tricky part about the problem was that while running a diagnostic test, some vehicles experiencing this issue released normal test results. Transmission repairs are expensive and cost some aggrieved drivers about \$4,000 to rebuild or replace the malfunctioning system. On top of that, theres another big question here how long does it take to rebuild a transmission? Its not an easy fix, so besides the hefty paycheck for the repair, drivers were also often left without their cars for days or even weeks. You need to note the Ford Edge years to avoid, especially if you buy from the used vehicle market. So, now that we have identified the issues common for the badly-rated years, the question is what are the worst Ford Edge years? The worst Ford Edge years are 2011 and 2013, but heres a full list: 2007 2008 2010 2011 2012 2013 2015 2016 2017 Well also take an in-depth look at these to help you figure out why these model years should be avoided. The first generation of Ford Edge had little success as only the 2009 and 2014 models did not have so many issues to the point they had to be avoided. It is believed that Ford rushed most of the vehicles of this first generation into production, which is why there were high numbers of complaints about the car at the time. The most common problem for this generation of Ford Edge was the door sensor which always kept its ajar light on, making the ECU mark it as poorly secured and making it difficult to lock the vehicle from afar using the key fob. Other problems Ford Edge had in this generation were transmission and brake issues, together with engine problems. The cost of repairs and the inconvenience of these Ford Edge models make them undesirable and not worth the money. It would be best to avoid them at all costs, especially when buying a used vehicle. The second generation of Ford Edges did far better than that of the first generation. Having learned from their mistakes, they gave a better delivery, reflected in their current reliability scores. However, if you are looking for a used car, you would be better off avoiding the 2015 and 2016 models, especially those with 60,000 miles on them. The 2015 Ford Edge is prone to electrical faults affecting most of its technologies. There were reports of the infotainment system freezing, the camera results not reflecting in the display when the car is in reverse, and frequently failing GPS. The structural integrity of the 2015 Ford Edge was also questionable, as the door seal was not strong enough, causing leaks. Other drivers reported hearing random noises from the car and a serious problem with the oil pan gasket, which caused oil leaks. The oil problem was severe and could not be resolved by simply replacing the oil pan gasket. The 2017 model had issues with engine coolant leaking into the cylinders which often led to complete engine breakdown and repairs of up to \$5,000. Some Ford Edge years have fewer problems, especially those of the second generation. So, if you are wondering what are the best Ford Edge years to buy, heres the answer: 2009 2014 2018 2019 2020 2021 2022 Despite being part of the first generation, the 2014 Ford Edge is the most reliable as it is known to cover up to 100,000 to 200,000 miles without many issues requiring a high repair cost. The 2014 Ford Edge received decent ratings from drivers thanks to the lack of issues that affected all the previous first-gen model years. It had fewer transmission problems reported and the main issue with this one proved to be the electrical system. Problems with A/C heater and interior accessories were also pretty common, but they were at least nothing to worry about in terms of driving safety, making this one the best first-gen Ford Edge model. The Ford Edge is worth buying as far as you know which one to avoid. If you are looking for an older option, the 2014 model is worth your money. The newer versions all come with innovations that make driving easier and safer. So far, Ford has recorded success with these recent versions and receives good safety and reliability ratings from drivers. Despite its rocky and complaint-filled start, Ford Edge has finally lived up to its potential, making it an SUV you would enjoy riding to its ripe old age. Utilizing insights from real vehicle owners and extensive research, we aim to optimize your car buying journey. Are you wondering which years to avoid for a hassle-free ownership experience? Our thorough guides like Subaru Outback years to avoid, Hyundai Santa Fe years to avoid, and Nissan Pathfinder years to avoid highlight the years that might not be worth your investment. Embark on your quest for a new car with the assurance that comes from our detailed, reliable guidance. The Ford Edge models of 2007 and 2008 had the most transmission problems. They were bad to the point that the transmission would shut down without warning while the car was in motion. Ford Edges are reliable and provide good handling, performance, and fuel economy. You only have to steer clear of most of the models from its first generation with their many faults and misgivings. The worst Ford Edge to buy is the 2011 model. It had more problems than all the other first-generation models and cost much more to repair and maintain. The 2014 Ford Edge is the most reliable, with a recorded mileage of over 100,000-200,000, which is pretty high for the SUV. It is surprising because it is part of the first generation of Ford Edges, which contains the worst ever produced. Share copy and redistribute the material in any medium or format for any purpose, even commercially. Adapt remix, transform, and build upon the material for any purpose, even commercially. The licensor cannot revoke these freedoms as long as you follow the license terms. Attribution You must give appropriate credit, provide a link to the license, and indicate if changes were made. You may do so in any reasonable manner, but not in any way that suggests the licensor endorses you or your use. ShareAlike If you remix, transform, or build upon the material, you must share your creations under the same license as the original. No additional restrictions You may not apply legal terms or technological measures that restrict others from doing anything that the license permits. No warranties are given. The license may not give you all of the permissions necessary for your intended use. For example, other rights such as publicity, privacy, or moral rights may limit how you use the material. Model Trims Edge 2.0 (245 Hp) Automatic Edge 2.0 (245 Hp) AWD Automatic Edge 2.0 TDCi (180 Hp) AWD Edge 2.0 TDCi (210 Hp) AWD PowerShift Edge 2.7 V6 (316 Hp) Automatic Edge 2.7 V6 (316 Hp) AWD Automatic Edge 3.5 V6 (280 Hp) Automatic Edge 3.5 V6 (280 Hp) AWD Automatic The Ford Edge is one of the best compact SUVs on the used car market, but only if you can pick a problem-free model year. There have been some minor and worst years with an in-depth analysis of the problems to help you buy the best-rated Edge model regardless of its generation. Ford Edge problemsWorst Ford Edge yearsBest Ford Edge yearsWhy you can trust REREVEs advice on which car model years to avoid: Our car experts look at official data, ask real drivers what they think, and talk to experienced mechanics to make sure our list is useful. This reliable info can make buying a car easier for you. Want to know how we do it? Find out more about our research methodology. While evaluating the best and worst Ford Edge years, our team used information from reputable and trusted sources. We first focused on NHTSA complaints and details on official recalls issued by Ford as we wanted to see which problem caused them. On top of that, we also wanted to hear first-hand driving impressions and reliability reviews provided by Ford Edge owners, both past and present. To wrap things up, we used some information from popular forum threads, but only if we could find supporting statements for those. With all that considered, heres a list of both the best and worst Ford Edge years: Ford Edge GenerationBest Ford Edge YearsWorst Ford Edge Years1st generation2009, 2014/2007, 2008, 2010, 2011, 2012, 2013/2nd generation2023N/A Despite being a decent daily commuter car, the Ford Edge has had some model-specific issues out of which several have been severe including engine faults. So, well go through all of those to help you avoid the model years affected by those issues. The clicking noise emanating from the wheel area was widespread for the 2007 to 2014 models. They usually begin after 75,000 miles and are mainly attributed to being caused by loose plastic cladding or one with too much space between it and the wheel. Drivers mostly resolved the issue by replacing the plastic cladding. The Ford Edge has occasional airbag problems, but none were more remarkable than that of the 2016-2017 models. Before then, the SUV had faced an airbag issue with its 2007-2008 units which they recalled in January 2017 and offered free passenger frontal airbag inflator replacements for drivers willing to continue with the vehicle. That of 2016-2017 failed the Federal Motor Vehicle Safety Standard (FMVSS) requirements and was outright labeled unsafe. The cause of the airbag issue was the quick degrading of the propellant in the inflators due to changing temperatures and humidity which sometimes triggered the SRS light. Therefore, when engaged, the airbag would detach from its assembly or not fully inflate, leaving the driver with higher risks of harm. 2007, 2008, and 2011 Ford Edge were famous for constantly sliding windshield seals. The adhesive used to put it in place was bad and had to be frequently repaired as it kept happening even after being reinforced with a new seal some months before. In extreme cases, rainwater leaked into the SUV and soaked the floor and other items, opening opportunities for more problems. The windshield had to be removed completely for the foam seal to be replaced. After 80,000 miles, the 2007 and 2008 Ford Edge models usually had transmission issues which sometimes left the driver suddenly immobile in the middle of a ride. The tricky part about the problem was that while running a diagnostic test, some vehicles experiencing this issue released normal test results. Transmission repairs are expensive and cost some aggrieved drivers about \$4,000 to rebuild or replace the malfunctioning system. On top of that, theres another big question here how long does it take to rebuild a transmission? Its not an easy fix, so besides the hefty paycheck for the repair, drivers were also often left without their cars for days or even weeks. You need to note the Ford Edge years to avoid, especially if you buy from the used vehicle market. So, now that we have identified the issues common for the badly-rated years, the question is what are the worst Ford Edge years? The worst Ford Edge years are 2011 and 2013, but heres a full list: 2007 2008 2010 2011 2012 2013 2015 2016 2017 Well also take an in-depth look at these to help you figure out why these model years should be avoided. The first generation of Ford Edge had little success as only the 2009 and 2014 models did not have so many issues to the point they had to be avoided. It is believed that Ford rushed most of the vehicles of this first generation into production, which is why there were high numbers of complaints about the car at the time. The most common problem for this generation of Ford Edges was the door sensor which always kept its ajar light on, making the ECU mark it as poorly secured and making it difficult to lock the vehicle from afar using the key fob. Other problems Ford Edge had in this generation were transmission and brake issues, together with engine problems. The cost of repairs and the inconvenience of these Ford Edge models make them undesirable and not worth the money. It would be best to avoid them at all costs, especially when buying a used vehicle. The second generation of Ford Edges did far better than that of the first generation. Having learned from their mistakes, they gave a better delivery, reflected in their current reliability scores. However, if you are looking for a used car, you would be better off avoiding the 2015 and 2016 models, especially those with 60,000 miles on them. The 2015 Ford Edge is prone to electrical faults affecting most of its technologies. There were reports of the infotainment system freezing, the camera results not reflecting in the display when the car is in reverse, and frequently failing GPS. The structural integrity of the 2015 Ford Edge was also questionable, as the door seal was not strong enough, causing leaks. Other drivers reported hearing random noises from the car and a serious problem with the oil pan gasket, which caused oil leaks. The oil problem was severe and could not be resolved by simply replacing the oil pan gasket. The 2017 model had issues with engine coolant leaking into the cylinders which often led to complete engine breakdown and repairs of up to \$5,000. Some Ford Edge years have fewer problems, especially those of the second generation. So, if you are wondering what are the best Ford Edge years to buy, heres the answer: 2009 2014 2018 2019 2020 2021 2022 Despite being part of the first generation, the 2014 Ford Edge is the most reliable as it is known to cover up to 100,000 to 200,000 miles without many issues requiring a high repair cost. The 2014 Ford Edge received decent ratings from drivers thanks to the lack of issues that affected all the previous first-gen model years. It had fewer transmission problems reported and the main issue with this one proved to be the electrical system. Problems with A/C heater and interior accessories were also pretty common, but they were at least nothing to worry about in terms of driving safety, making this one the best first-gen Ford Edge model. The Ford Edge is worth buying as far as you know which one to avoid. If you are looking for an older option, the 2014 model is worth your money. The newer versions all come with innovations that make driving easier and safer

2017 ford edge problems. 2016 ford edge problems. 2016 ford edge engine problems. 2017 ford edge engine problems.