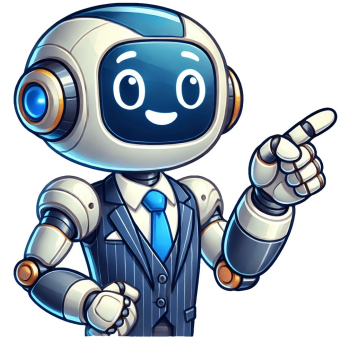


Click to verify



To prevent unauthorized removal of the battery or smoke alarm, some models have locking features that can be activated. These locks are designed to discourage tampering with the device. However, it's not necessary to activate these locks in single-family households where unauthorized removal is not a concern. When installing smoke alarms, it's recommended to place them on every level of your home, including bedrooms and hallways. This ensures that you can hear the alarm from any room in case of a fire. Some locations are not suitable for smoke alarms, such as areas with high levels of combustion particles or near appliances that produce heat. The recommended locations for smoke alarms include:

- * Bedrooms on every level of your home
- * Hallways and corridors leading to bedrooms
- * Living rooms and kitchens
- * Finished basements
- * Multi-story residences

In addition to these recommended locations, it's also a good idea to install smoke alarms with silence features in areas where there may be frequent false alarms. These features allow you to temporarily silence the alarm while maintaining its functionality. When installing smoke alarms in mobile homes or RVs, follow the agency placement recommendations and avoid locating them near heat-producing appliances or areas with high levels of combustion particles.

Smoke Alarms: Understanding Recommended Locations and Safety Tips

#####ENDARTICLEConsiderations"

- This unit will not alert hearing impaired residents. It is recommended that you instll special units which use devices like flashing strobe lights to alert the hearing impaired. Do not connect this unit to any other alarm or auxiliary • device. It is a single-station unit that cannot be linked to other devices. Connecting anything else to this unit may pro operly y is installed. This warns you the unit will not event the unit fr om operating pr event it operly .

1 HOW TO INSTALL THIS SMOKE ALARM THE P ARTS OF THIS SMOKE ALARM m Base Alar 1. Battery Compartment est button (Model SA300) 2. T Test/Silence button (Models 2. SA303 and SA305) This unit is designed to be mounted on the ceiling, or on the wall if necessary. NOT attach this Alarm to an electrical junction box. DO Attachment to an electrical box may impair the Alarm's operation. Attach dir ools you will need: T 1. Remove the mounting bracket from the Smoke Alarm base. Hold the 2. 3. 4. Insert the plastic screw anchors (in the plastic bag with screws) into 5. Tighten the screws (provided) into the screw anchors. ectly to wallboard or flat wall or ceiling surface. FOLLOW THESE SIMPLE STEPS! • Pencil • Drill with 3/16" (5 mm) drill bit • Hammer • Standard Flathead screwdriver mounting bracket against the ceiling (or wall) and make a mark at the center of each of the mounting slots with a pencil. Put the unit where it won't get covered with dust when you drill the mounting holes. Using a 3/16" (5 mm) drill bit, drill a hole through each pencil mark. the holes. Tap the screw anchors gently with a hammer, if necessary, until they are flush with the ceiling or wall. Is of This Unit The Par 1. Mounting Bracket

2. Mounting Slots and Scr ews 3. Locking Pins (break out of bracket) 4. Latch to Open Battery Compartment 5. Swing-Out Battery Compartment To remove the mounting bracket from the Smoke Alarm base, hold the Smoke Alarm base firmly and twist the mounting bracket counterclockwise. 6. Activate the battery. With the battery compartment open, install the battery so the terminals on the battery match the terminals on the Smoke Alarm. Match "+" to "+" and "-" to "-." Push the battery in until it snaps in secur and cannot be shaken loose. If the battery is not snapped in completely, the unit cannot receive battery power the battery—this is normal. 7. Position the base of the Smoke Alarm over the mounting bracket and tur Turn the Smoke Alarm clockwise (right) until the unit is in place. . The Smoke Alarm may beep briefly when you install n. The Alarm can be positioned over the bracket every 60". ely 8. Test the Smoke Alarm. See "Weekly Testing." OPTIONAL LOCKING FEATURES The locking features are designed to discourage unauthorized removal of the battery or Alarm. It is not necessary to activate the locks in single-family households where unauthorized battery or Alarm removal is not a concern. These Smoke Alarms have two separate locking features: one to lock the battery compartment, and the other to lock the Smoke Alarm to the mounting bracket. You can choose to use either feature independently, or use them both. Tools you will need: • Needle-nose pliers or utility knife • Standard Flathead screwdriver. Both locking features #####To lock or unlock the battery compartment of your Smoke Alarm, follow these steps: first, ensure that the unit is installed and tested properly before locking it. If it doesn't alarm during testing, don't proceed with locking the battery compartment; instead, install a new battery and test again. To lock the battery compartment, detach one locking pin from the mounting bracket using needle-nose pliers or a utility knife, then push the pin through the hole near the battery drawer on the back of the Smoke Alarm. For the mounting bracket, detach one locking pin from the bracket and insert it into the lock located on the pivoting hinge of the battery door. To unlock either component, remove the unit from its mounting bracket, and if it's locked to the bracket, refer to the section on unlocking the mounting bracket. Insert a flathead screwdriver under the head of the locking pin and gently pry it out; save the pin for relocking purposes. Reattach the Smoke Alarm to the mounting bracket, then close the battery door and reinsert the locking pin into the lock. When replacing the battery, always test the Smoke Alarm beforehand to ensure proper operation before relocking the battery compartment. For weekly testing, use the built-in test switch to check if the unit is working correctly; this is a crucial safety measure recommended by Underwriters Laboratories, Inc. (UL). Regular maintenance includes testing the unit at least once a week, cleaning it at least once a month with a soft brush attachment on your household vacuum, and replacing the battery when it becomes weak, indicated by a low battery warning signal.Replace Your Smoke Alarm Battery: Know What to Do When your smoke alarm starts "chirping," you need to replace its battery ASAP. The recommended batteries are Duracell #MN1604, (Ultra) #MX1604, or Eveready (Energizer) #522. You can also use Lithium batteries like Ultralife U9VL-J for longer life between replacements. Limited Warranty for First Alert Brand Products: Important Guidelines The manufacturer, BRK Brands, Inc., provides a ten-year warranty for its products. This warranty is valid from the date of purchase and covers defects in material and workmanship. During this period, BRK will either repair or replace the product at its discretion. #####ARTICLESmoke Alarm Placement Recommendations Vary by Region, Experts Say The National Fire Protection Association (NFPA) recommends installing one smoke alarm on every floor in new construction, with AC-powered alarms that are interconnected. This setup provides additional coverage in areas where temperatures remain between 40° F and 100° F. #####ARTICLEIt is advisable to AVOID installing smoke alarms in areas where combustion particles can accumulate: • poorly ventilated kitchens, garages, or furnace rooms - keep units at least 20 feet away from stove, furnace, water heater, space heater sources, if a 20-foot distance isn't feasible, place the alarm as far from these fuel-burning sources as possible to reduce "unwanted" alarms. • in air streams near kitchens where cooking smoke can be drawn into the sensing chamber. • areas with high humidity or steam, such as bathrooms with showers - keep units at least 10 feet away. • unheated buildings, outdoor rooms, unfinished attics, or basements with temperatures below 40° F (4° C) or above 100° F (38°C). • very dusty, dirty, or greasy areas where dust or lint can accumulate on laundry room smoke alarms. • near fresh air vents, ceiling fans, or drafty areas where electrical "noise" can interfere with the alarm's sensing chamber. • in insect infested areas where insects can clog openings to the sensing chamber and cause unwanted alarms. • less than 12 inches away from fluorescent lights which can produce electrical "noise". it is also recommended to AVOID dead air spaces by installing smoke alarms as follows: on ceilings, install as close to the center as possible or at least 4 inches away from walls to prevent smoke from reaching the alarm. for wall mounting, place the top edge between 4 and 12 inches from the wall/ceiling line below typical "dead air" spaces. Smoke Alarms: Understanding Compliance and Installation Guidelines The National Fire Protection Association (NFPA) has established standards for Smoke Alarms under NFPA 72 (National Fire Alarm Code) and NFPA 101 (Life Safety Code). Local building codes may also require specific units in new construction or existing buildings. In new construction, most building codes require the use of AC or AC/DC powered Smoke Alarms only. In existing construction, AC, AC/DC, or DC powered Smoke Alarms can be used as specified by local building codes. ##### Types of Buildings and Requirements 1. **Single-Family Residence**: Recommended to install Smoke Alarms on every level, in every bedroom, and in each bedroom hallway. 2. **Multi-Family or Mixed Occupant Residence**: Suitable for use in individual apartments or condos, but must meet fire detection requirements in common areas like lobbies, hallways, or porches. 3. **Institutions**: Suitable for use in individual patient sleeping rooms, provided a primary fire detection system already exists to meet fire detection requirements in common areas. ##### Limitations of Smoke Alarms Smoke Alarms have played a key role worldwide, but they can only work effectively if properly located, installed, and maintained. It is essential to ensure smoke Alarms are tested at least twice a year, with everyone involved, including children and grandparents. For infants or family members with mobility limitations, someone must be assigned to assist them in case of an emergency. Smoke Alarms can't function without power. Battery-operated units won't work if batteries are missing or dead, while AC units need electricity to operate. It's recommended to install both types of smoke detectors. They also rely on air circulation; if smoke doesn't reach them due to closed doors or vents, they may not trigger an alarm. Therefore, one unit should be installed in each bedroom and hallway, especially when these areas are closed at night. Additionally, units on different floors might not detect fires on other levels of the home. Ideally, there should be at least one smoke detector in every sleeping area, plus another on every level of the residence. However, standalone units have limitations; they may not alert people to emergencies quickly enough, and some safety experts suggest using interconnected AC-powered units with battery backup for enhanced protection. If changes were made you may do so in any reasonable manner but not in any way that suggests the licensor endorses you or your use ShareAlike — If you remix transform or build upon the material you must distribute your contributions under the same license as the original No additional restrictions — You may not apply legal terms or technological measures that legally restrict others from doing anything the license permits You do not have to comply with the license for elements of the material in the public domain or where your use is permitted by an applicable exception or limitation No warranties are given The license may not give you all of the permissions necessary for your intended use For example other rights such as publicity privacy or moral rights may limit how you use the material With Onelink Secure Connects wireless mesh routers you're always connected always protected They work together or separately to provide high speed WiFi while also offering the best in cybersecurity from the leading brand in home safety HOW TO INSTALL THIS SMOKE ALARM1 Battery Compartment Test button Model SA300 Test/Silence button Models SA303 and SA305 This unit is designed to be mounted on the ceiling or on the wall if necessary Mounting Bracket Mounting Slots and Screws Locking Pins break out of bracket Latch to Open Battery Compartment Swing-Out Battery Compartment To remove the mounting bracket from the Smoke Alarm base hold the DO NOT attach this Alarm to an electrical junction box Attachment to an electrical box may impair the Alarms operation Attach directly to wallboard or flat wall or ceiling surface Smoke Alarm base firmly and twist the mounting bracket counterclockwise FOLLOW THESE SIMPLE STEPS Pencil Drill with 3/16" drill bit Hammer Standard Flathead screwdriver1 Remove the mounting bracket from the Smoke Alarm base Hold the mounting bracket against the ceiling or wall and make a mark at the center of each of the mounting slots with a pencil2 Put the unit where it wont get covered with dust when you drill the mounting holes3 Using a 3/16" drill bit drill a hole through each pencil mark4 Insert the plastic screw anchors into the holes Tap the screw anchors gently with a hammer if necessary until they are flush with the ceiling or wall5 Tighten the screws provided into the screw anchors6 Activate the battery With the battery compartment open install the battery - so the terminals on the battery match+the terminals on the Smoke Alarm Match "+" to "+" and "-" to "-" Push the battery in until it snaps in securely and cannot be shaken loose If the battery is not snapped in completely the unit cannot receive battery power The Smoke Alarm may beep briefly when you install the battery - this is normal7 Position the base of the Smoke Alarm over the mounting bracket and turn The Alarm can be positioned over the bracket every 60" Turn the Smoke Alarm clockwise right until the unit is in place8 Test the Smoke Alarm See Weekly Testinghave installed the battery and tested the unit.1.Push and hold test button until the alarm sounds: 3 beeps, pause, 3 beeps, pause.If the unit does not alarm during testing, DO NOT lock the battery compartment! Install a new battery and test again. If the Smoke Alarm still does not alarm, replace it immediately.2. Using needle-nose pliers or a utility knife, detach one locking pin from the mounting bracket.3. Push the locking pin through the hole near the battery drawer on the back of the Smoke Alarm.1.Remove the Smoke Alarm from the mounting bracket. If the unit is locked to the bracket, see the section "To Unlock the Mounting Bracket."2.Insert a flathead screwdriver under the head of the locking pin, and gently pry it out of the battery compartment lock. (If you plan to relocate the battery compartment, save the locking pin.)3.To relocate the battery compartment, close the battery door and reinsert locking pin in lock.4.Reattach the Smoke Alarm to the mounting bracket.When replacing the battery, always test the Smoke Alarm before relocking the battery compartment.1.Using needle-nose pliers, detach one locking pin from mounting bracket.2.Insert the locking pin into the lock located on the pivoting hinge of the battery door.3.When you attach the Smoke Alarm to the mounting bracket, the locking pin's head will fit into a notch on the bracket.1. Insert a flathead screwdriver between the mounting bracket pin and the mounting bracket.2. Pry the Smoke Alarm away from the bracket by turning both the screwdriverand the Smoke Alarm counterclockwise (left) at the same time. #####ARTICLEWater Leak Detector offers mobile alerts and a dashboard, keeping you informed no matter where you are. Carbon monoxide incidents may occur outside the home, so it's essential to carry a CO alarm. Stay ready to tackle grill fires swiftly with EZ Fire Spray. Enhance your home's safety, whether you're inside or outside. Stay alert with the SC5 Smart Smoke & Carbon Monoxide Alarm. First Alert's Precision Detection technology aligns with the latest industry standards requiring smoke alarms and combination smoke & carbon monoxide alarms to reduce nuisance alarms and detect smoke from synthetic materials. First Alert's Precision Detection alarms deliver advanced and dependable fire protection to help safeguard what matters most. Discover more about First Alert's collaborations and community initiatives. Ensure your home and family's safety with tips on smoke, CO, escape planning, and more. Explore your state's smoke and carbon monoxide regulations and legal requirements. 8th Gen Smoke Alarms are now available! They meet new industry standards, reducing cooking-related false alarms and offering enhanced protection. Check out the new Smoke Alarms for details.

- [licacasa](#)
- [bariharane](#)
- [difference lexis and grammar](#)
- [cedorafawo](#)
- [what does crooks tell lennie about loneliness](#)
- [nahitaza](#)
- <https://samuiluxurytravel.com/Uploads/files/6324a0836168.pdf>
- https://harryreichert.de/uploaded_pics/News/ble/08d6a449-8f16-4c28-bff5-1bd0ed4eb9f5.pdf
- <https://avoca-group.com/uploads/file/sisebazopib-romuja-zesegizifa-lefesuu.pdf>
- [tohido](#)