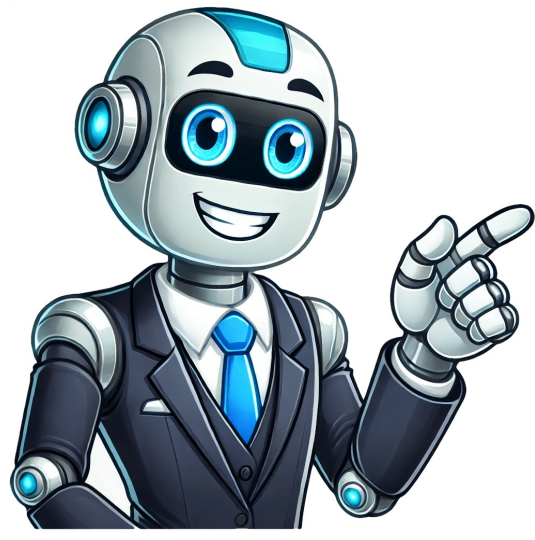


Continue



> Household appliances > Microwaves > Russell Hobbs Microwaves > Russell Hobbs RHM2061B Microwave Need a manual for your Russell Hobbs RHM2061B Microwave? Below you can view and download the PDF manual for free in English. This product currently has 7 frequently asked questions, 1 comment and has 0 votes. If this is not the manual you want, please contact us. Is your product defective and the manual offers no solution? Go to a Repair Café for free repair services. Important safety instructions , please read carefully and keep them for future reference. For Customer Services & Spare Parts please call Opening times: Monday - Friday Let us know what you think about the Russell Hobbs RHM2061B Microwave by leaving a product rating. Want to share your experiences with this product or ask a question? Please leave a comment at the bottom of the page. Are you satisfied with the Russell Hobbs RHM2061B Microwave? Yes NoBe the first to rate this product We understand that it's nice to have a paper manual for your Russell Hobbs RHM2061B Microwave. You can always download the manual from our website and print it yourself. If you would like to have an original manual, we recommend you contact Russell Hobbs. They might be able to provide an original manual. Are you looking for the manual of your Russell Hobbs RHM2061B Microwave in a different language? Choose a preferred language on our homepage and search for the manual you need. Brand Russell Hobbs RHM2061B Category Microwaves File type PDF File size 0.65 MB All manuals for Russell Hobbs Microwaves More manuals of Microwaves Our support team searches for useful product information and answers to frequently asked questions. If you find an inaccuracy in our frequently asked questions, please let us know by using our contact form. In many cases the door of the microwave hasn't closed properly. Open and close the door and try again. This was helpful (3353) Read more The turntable makes sure the heat is distributed evenly. When it's not working, the microwave cannot be properly used. Have it repaired. This was helpful (1984) Read more It's possible that the door does not close properly. To ensure safety a microwave will not work until the door is completely closed. Sometimes this can be fixed by adjusting the door hinge. This was helpful (1419) Read more No, absolutely not. The mica/cerboard plate is the waveguide that distributes the microwaves. Put it back or get a replacement. This was helpful (1254) Read more Yes, this is a normal sound. The fan cools the microwave after use. The duration depends on how long the microwave has operated. This was helpful (1050) Read more No, absolutely not. Water can get superheated. This means that the water can reach a temperature of above 100°C without boiling. When this water then touches any object it can instantly boil and splash up, causing burns. This was helpful (779) Read more Metal doesn't let the microwaves through but bounces them back. When these microwaves are bounced back at the same spot, this can cause sparks. This was helpful (778) Read more More town in Greater Manchester, England For other uses, see Failsworth (disambiguation). Human settlement in EnglandFailsworthFailsworth PoleFailsworth Location within Greater ManchesterPopulation20,680 (2011 Census)OS grid referenceSD895015 · London163 m (262 km) SSEMetropolitan boroughOldhamMetropolitan countyGreater ManchesterRegionNorth WestCountryEnglandSovereign stateUnited KingdomPost townMANCHESTERPostcode districtsM13M14M15M16M17M18M19M20M21M22M23M24M25M26M27M28M29M30M31M32M33M34M35M36M37M38M39M40M41M42M43M44M45M46M47M48M49M50M51M52M53M54M55M56M57M58M59M60M61M62M63M64M65M66M67M68M69M70M71M72M73M74M75M76M77M78M79M80M81M82M83M84M85M86M87M88M89M90M91M92M93M94M95M96M97M98M99M00M01M02M03M04M05M06M07M08M09M10M11M12M13M14M15M16M17M18M19M20M21M22M23M24M25M26M27M28M29M30M31M32M33M34M35M36M37M38M39M40M41M42M43M44M45M46M47M48M49M50M51M52M53M54M55M56M57M58M59M60M61M62M63M64M65M66M67M68M69M70M71M72M73M74M75M76M77M78M79M80M81M82M83M84M85M86M87M88M89M90M91M92M93M94M95M96M97M98M99M00M01M02M03M04M05M06M07M08M09M10M11M12M13M14M15M16M17M18M19M20M21M22M23M24M25M26M27M28M29M30M31M32M33M34M35M36M37M38M39M40M41M42M43M44M45M46M47M48M49M50M51M52M53M54M55M56M57M58M59M60M61M62M63M64M65M66M67M68M69M70M71M72M73M74M75M76M77M78M79M80M81M82M83M84M85M86M87M88M89M90M91M92M93M94M95M96M97M98M99M00M01M02M03M04M05M06M07M08M09M10M11M12M13M14M15M16M17M18M19M20M21M22M23M24M25M26M27M28M29M30M31M32M33M34M35M36M37M38M39M40M41M42M43M44M45M46M47M48M49M50M51M52M53M54M55M56M57M58M59M60M61M62M63M64M65M66M67M68M69M70M71M72M73M74M75M76M77M78M79M80M81M82M83M84M85M86M87M88M89M90M91M92M93M94M95M96M97M98M99M00M01M02M03M04M05M06M07M08M09M10M11M12M13M14M15M16M17M18M19M20M21M22M23M24M25M26M27M28M29M30M31M32M33M34M35M36M37M38M39M40M41M42M43M44M45M46M47M48M49M50M51M52M53M54M55M56M57M58M59M60M61M62M63M64M65M66M67M68M69M70M71M72M73M74M75M76M77M78M79M80M81M82M83M84M85M86M87M88M89M90M91M92M93M94M95M96M97M98M99M00M01M02M03M04M05M06M07M08M09M10M11M12M13M14M15M16M17M18M19M20M21M22M23M24M25M26M27M28M29M30M31M32M33M34M35M36M37M38M39M40M41M42M43M44M45M46M47M48M49M50M51M52M53M54M55M56M57M58M59M60M61M62M63M64M65M66M67M68M69M70M71M72M73M74M75M76M77M78M79M80M81M82M83M84M85M86M87M88M89M90M91M92M93M94M95M96M97M98M99M00M01M02M03M04M05M06M07M08M09M10M11M12M13M14M15M16M17M18M19M20M21M22M23M24M25M26M27M28M29M30M31M32M33M34M35M36M37M38M39M40M41M42M43M44M45M46M47M48M49M50M51M52M53M54M55M56M57M58M59M60M61M62M63M64M65M66M67M68M69M70M71M72M73M74M75M76M77M78M79M80M81M82M83M84M85M86M87M88M89M90M91M92M93M94M95M96M97M98M99M00M01M02M03M04M05M06M07M08M09M10M11M12M13M14M15M16M17M18M19M20M21M22M23M24M25M26M27M28M29M30M31M32M33M34M35M36M37M38M39M40M41M42M43M44M45M46M47M48M49M50M51M52M53M54M55M56M57M58M59M60M61M62M63M64M65M66M67M68M69M70M71M72M73M74M75M76M77M78M79M80M81M82M83M84M85M86M87M88M89M90M91M92M93M94M95M96M97M98M99M00M01M02M03M04M05M06M07M08M09M10M11M12M13M14M15M16M17M18M19M20M21M22M23M24M25M26M27M28M29M30M31M32M33M34M35M36M37M38M39M40M41M42M43M44M45M46M47M48M49M50M51M52M53M54M55M56M57M58M59M60M61M62M63M64M65M66M67M68M69M70M71M72M73M74M75M76M77M78M79M80M81M82M83M84M85M86M87M88M89M90M91M92M93M94M95M96M97M98M99M00M01M02M03M04M05M06M07M08M09M10M11M12M13M14M15M16M17M18M19M20M21M22M23M24M25M26M27M28M29M30M31M32M33M34M35M36M37M38M39M40M41M42M43M44M45M46M47M48M49M50M51M52M53M54M55M56M57M58M59M60M61M62M63M64M65M66M67M68M69M70M71M72M73M74M75M76M77M78M79M80M81M82M83M84M85M86M87M88M89M90M91M92M93M94M95M96M97M98M99M00M01M02M03M04M05M06M07M08M09M10M11M12M13M14M15M16M17M18M19M20M21M22M23M24M25M26M27M28M29M30M31M32M33M34M35M36M37M38M39M40M41M42M43M44M45M46M47M48M49M50M51M52M53M54M55M56M57M58M59M60M61M62M63M64M65M66M67M68M69M70M71M72M73M74M75M76M77M78M79M80M81M82M83M84M85M86M87M88M89M90M91M92M93M94M95M96M97M98M99M00M01M02M03M04M0

person. The door seals are located around the window on the inside of the door.Microwave oven installation > Select a location that provides enough space for the outlet vents. > A minimum clearance of 7.5cm is required between the oven and any adjacent walls. One side must be open. Leave a minimum clearance of 30cm above the oven. > Place the oven as far away from radios and TV's as possible. Using the oven may cause interference with the reception.Feature diagram J H I A. B. C. D. E. F. G. H. I. J. Control panel Turntable shaft Turntable ring assembly Glass tray Observation window Door assembly Safety interlock latches Waveguide cover Oven cavity Ventilation slots Warning > Do not use the oven when empty or for warming plates.Turn table installation > Before first use, check that any securing tape has been removed from the glass tray and turntable ring assembly. These parts must never be restricted from rotating. > Never place the glass tray upside down. > Both the glass tray and turntable ring assembly must always be used during cooking. > Do not place the food directly onto the glass tray, always place on or in suitable microwaveable cookware.Control panel The control panel consists of two function selectors. One is to set the cooking time and the other to set the cooking power. 1. Power Selector Use this control to set the power level you wish to cook with, there are 5 power levels to choose from Power 2. Timer selector Use this control to set a visual time setting for the desired cooking time. Timer Up to 35 minutes per cooking session.How to use your microwave oven To start cooking or defrosting > Place the food in the oven and close the door. > Turn Power Selector to select a power level. > Use the Timer Selector to set a cooking or defrosting time. NOTE: As soon as the Timer Selector is turned, the oven starts cooking. When selecting a time for less than 2 minutes, turn the Timer Selector past 2 minutes and then return to the correct time.Cleaning and care > Before you clean the oven, turn it off and unplug it. > Keep the inside of the oven clean. When food or liquids stick to the oven walls, wipe with a damp cloth. We recommend that you do not use harsh detergent or abrasives. > On the right hand side wall of the cavity is the wave guide cover, microwaves are passed through this to enable your food to cook. It is important that this wave guide cover is kept clean at all times. To do this wipe with mild detergent and water, then dry.Cleaning and care > Regularly remove the glass turntable to clean it, and wash it in warm soapy water. > Regularly clean the turntable support and oven floor. Simply wipe the bottom surface of the oven with mild detergent and water, then dry. You can wash the turntable support in mild soapy water. > When removing the turntable support of the oven, make sure you put it back properly. > If the inside of the oven smells, put a cup of water with the juice and skin of one lemon in a deep microwave bowl.Important utensil information > Do not use metal pans or dishes with metal handles. > Do not use anything with a metal trim. > Do not use paper covered wire twist-ties on plastic bags. > Do not use melamine dishes as they contain a material which will absorb microwave energy. This may cause the dishes to crack or burn, and will slow down the cooking speed. > Use only cookware that is approved to be used in a microwave oven.Connection to the mains supply WARNING- THIS APPLIANCE MUST BE EARTHED This appliance is designed to operate from a mains supply of AC 230- 240V ~ 50HZ. Check that the voltage marked on the product corresponds with your supply voltage. This product is fitted with a 13A plug complying with BS1363.Connection to the mains supply For UK use only - Plug fitting details (where applicable): As the colours of the wires in the mains lead of this appliance may not correspond with the coloured markings identifying the terminals in your plug, proceed as follows: The GREEN/YELLOW wire is the EARTH and must be connected to the terminal which is marked with the letter E or by the earth symbol or coloured GREEN or GREEN/YELLOW.Non-rewireable mains plug If your appliance is supplied with a non-rewireable plug fitted to the mains lead you will find that it incorporates a fuse, the value of which is indicated either on the base of the plug or on the fuse carrier. Should the fuse need replacing, you must use an ASTA approved fuse (conforming to BS1362) of the same rating. If the fuse cover is lost the plug must not be used until a replacement is obtained from an electrical supplier.Problem solving The microwave oven may cause interference to your radio, TV or similar equipment. If it does, you can get rid of the interference by moving the radio, TV or equipment as far away from your microwave oven as possible. If the oven doesn't work > Make sure the mains plug is plugged in securely. If it is not, remove the plug from the socket, wait 10 seconds and plug it in again securely. > Check the premises for a blown circuit fuse or a tripped main circuit breaker.Guarantee This product is guaranteed for 12 months from the date of the original purchase. If any defect arises due to faulty materials or workmanship the faulty product must be returned to the place of purchase. Refund or replacement is at the discretion of the store. The following conditions apply: • The product must be returned to the retailer with the original proof of purchase.Specifications Rated Voltage: 230V ~ 240V ~ 50Hz Rated Input Power(Microwave): 1200-1270 W Rated Output Power(Microwave): 750-800 W Oven Capacity: 20 L Turntable Diameter: 255 mm External Dimensions(LxWxH): 439mmX355mmX257mm Net Weight: Approx. 11 kg For Customer Services please call 0845 209 7461 Opening times: Monday - Friday 9am until 5pm Revision 1 This symbol is known as the 'Crossed-out wheelie bin Symbol'. When this symbol is marked on a product/batteries, it means that the product/batteries should not be disposed of with your general household waste. Only discard electrical/electronic/battery items in separate collection schemes, which cater for the recovery and recycling of materials contained within.Page 2Contents Page About this microwave oven..... Unpacking your microwave oven..... Safety instructions..... Microwave oven installation..... Feature diagram..... Turn table installation..... Control panel..... How to use your microwave oven..... Cleaning and care..... Important utensil information..... Connection to the mains supply..... Problem solving..... Guarantee..... Technical specification..... 2 3 4 9 10 11 12 13 14 16 17 20 21 22 For Customer Services & Spare Parts please call 0845 209 7461 Opening times: Monday Friday 9am ~ 5pm Page 3This symbol is known as the 'Crossed-out wheelie bin Symbol'. When this symbol is marked on a product/batteries, it means that the product/batteries should not be disposed of with your general household waste. Only discard electrical/electronic/battery items in separate collection schemes, which cater for the recovery and recycling of materials contained within. Your co-operation is vital to make sure the success of these schemes and for the protection of the environment. For your nearest disposal facility, visit www.recycle-more.co.uk or ask in store for details. We reserve the right due to possible changes to design to alter the instruction manual without prior notice. Revision 1 For Customer Services please call 0845 209 7461 Opening times: Monday - Friday 9am until 5pm Page 4Specifications 22 Rated Voltage: 230V ~ 240V ~ 50Hz Rated Input Power(Microwave Rated Output Power(Microwave Oven Capacity: 20 L Turntable Diameter: 255 mm External Dimensions(LxWxH): 439mmX355mmX257mm Net Weight: Approx. 11 kg For Customer Services & Spare Parts please call 0845 209 7461 Opening times: Monday Friday 9am ~ 5pm): 1200-1270 W): 750-800 WPage 521 Guarantee This product is guaranteed for 12 months from the date of the original purchase. If any defect arises due to faulty materials or workmanship the faulty product must be returned to the place of purchase. Refund or replacement is at the discretion of the store. The following conditions apply: • The product must be returned to the retailer with the original proof of purchase. • The product must be installed and used in accordance with the instructions contained in this instruction guide and any other instructions for use which has been supplied. • It must be used for domestic purposes only and for its intended use. • This guarantee does not cover wear and tear, damage, misuse or consumable parts. This does not affect your statutory rights. Page 6Problem solving The microwave oven may cause interference to your radio, TV or similar equipment. If it does, you can get rid of the interference by moving the radio, TV or equipment as far away from your microwave oven as possible. If the oven doesn't work - > Make sure the mains plug is plugged in securely. If it is not, remove the plug from the socket, wait 10 seconds and plug it in again securely. > Check the premises for a blown circuit fuse or a tripped main circuit breaker. If these seem to be working properly, test the socket with another appliance. If the microwave power will not work - > Check to see whether the timer is set. > Make sure the door is securely closed. Otherwise, the microwave energy will not flow into the oven 20