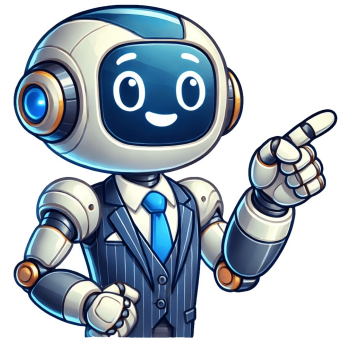


I'm not a bot



























My calculator will not turn on. Here are some things you might try prior to contacting Texas Instruments:Adjust the contrast as it may be set too low.To adjust the contrast, alternately press and release the appropriate function key and contrast-control key.TI-83/84 Plus or TI-85/86 Function key: [2nd] key Contrast-control keys: up and down cursor keys TI-89/92 or TI-89 Function key: diamond key Contrast-control keys: [+] or [-] keys TI-Nspire Function key: [ctrl] keyContrast-control keys: [+] or [-] keys Try recharging and/or replacing the batteries (including the backup battery.) Additional tips for grayscale TI-83/84 Plus calculators:Note: These steps will cause the calculator to reset and lose its memory.Remove one of the AAA batteries. Then, hold down the DEL key while reinserting the AAA battery. The handheld might display WaitingPlease install calculator software now. If you get this message, the information in the Correcting the Error: Waiting section shown below will help you correct the problem. Before trying that procedure, reinstall one of the AAA batteries again. This time do not hold down the DEL key.Remove one of the AAA batteries, press and hold the [on] key for 10 seconds, release, replace the battery, then turn the unit on. Adjust the contrast. Remove the AAA batteries for three hours. After the three hour period, reinsert the batteries and turn the handheld on. Adjust the contrast if necessary. Correcting the Error: WaitingCorrecting the Error: WaitingPlease Install Calculator Software Now (TI-83/84 Plus only)This message means that the operating system has been corrupted. The following steps will allow you to update the OS.Unit-to-UnitConnect two of the same calculators using the calculator-to-calculator cable that came with the calculator. On the calculator that has an up-to-date Operating System, select [2nd] Link, Select Send OS option from the Link menu. Make sure that the other unit still reads Waiting Please Install, then press [Enter]. The OS should be downloading. From a ComputerMake sure you have the latest version of the TI Connect Software.From TIs website, download the latest version of OS for your calculator to the desktop of the computer.Connect the TI Connectivity cable between the PC and calculator (this cable was not included with TI-83 Plus calculators).The calculator will automatically turn on when the TI Connectivity Cable is inserted.On your computer, drag and drop the OS file on the TI Connect icon to initiate the file transfer.If none of the above suggestions help, you will need to contact Texas Instruments directly. TI can be contacted at:phone: 1-800 TI CARES (1-800-842-2737)email: ti-cares@ti.com Skip to main content Reddit and its partners use cookies and similar technologies to provide you with a better experience. By accepting all cookies, you agree to our use of cookies to deliver and maintain our services and site, improve the quality of Reddit, personalize Reddit content and advertising, and measure the effectiveness of advertising. By rejecting non-essential cookies, Reddit may still use certain cookies to ensure the proper functionality of our platform. For more information, please see our Cookie Notice and our Privacy Policy. Our customer support team stands ready to assist you with all of your technical questions regarding to your calculator. Whether to select a new calculator or in any case of technical problems, we are here to help.For any problems, contacting our support teams by telephone may be the most expedient option. Telephone lines are open on weekdays between 8.30 am and 4.30 pm.You can contact us in your preferred language by phone or emailsupport@sharp-calculators.comEnglish:+420 541 422 511Franais:+420 532 190 367Deutsch:+420 541 422 511Dutch:+31 553123545etina:+420 541 422 511WarrantyYour calculator was carefully manufactured and its operability was checked at final inspection. If your device is defective and still under warranty period, please contact the seller from whom you bought the device.Assertion of warrantyThe warranty can be claimed only if the proof of purchase (invoice / receipt) with the date of purchase and the product code of the device is submitted. The failure of the device within the warranty period has to be claimed at the seller from whom you bought the product.Online RMA and Service for our partnersHow it works?Go to theonline Service RMA(Return Material Authorization) request form website and register or login. As a registered user, you can:Create service orderTrack your order statusManage your user profile settingsManage your account information You can perform your own minor repairs your Sharp calculator. Image Credit: Jupiterimages/Folka Dot/Getty Images A few different problems may cause your Sharp calculator to malfunction or stop working altogether. Fortunately, these issues are apt to be minor, and you can make a quick repair at home with only a small screwdriver and a ballpoint pen. For instance, when the calculator display is dim, the contrast is poor or the readout is blank when you turn on the device, it may be indicative of a dead battery, which is a simple fix. Other minor repairs may be needed to clear bugs in the calculator's programming code or to restore non-responsive keys to working order. Turn off the calculator. Using a screwdriver, remove the two screws on the back of the calculator securing the battery compartment cover. Slide the battery cover up and then lift to remove it from the back of the calculator. Pry the battery loose with the tip of a ballpoint pen and remove it. Insert a fresh battery with the "+" sign facing up. Close the battery cover and fasten the screws you removed earlier. Press the reset switch located in the small hole on the back of the calculator by inserting the tip of a ballpoint pen into the hole and pushing in. Hold the reset switch for three seconds and then release it to reset your calculator. This will clear all data stored in the calculator's memory and reset the device to its factory defaults. This should bring non-responsive keys back to life and clear any program glitches that might have been causing the calculator to malfunction. Turn on the calculator. Adjust the display contrast by pressing the "2ndF" button. Press the "SET UP" button and then press "3." Use the "+" and "-" buttons to adjust the contrast until you can easily read the display. When the settings are correct, "Normal Mode" should display on the calculator. If this message does not appear, try removing and re-installing the battery and repeating the procedure to reset the calculator.Appendix2. Troubleshooting GuideRefer to the list of possible symptoms, and solutions may be found here.The calculators power wont turn on!The operation batteries may not be installed, may be ex-hausted, or may be inserted incorrectly. Check the operation batteries in the battery compartment.Place the battery cover securely or the calculator will not turn on.The saved calculator configurations are not retained!Both the lithium battery and the operation batteries may need to be replaced.The power seems to be on, but the characters and numbers cannot be seen clearly on the display!The screen contrast may need to be adjusted.Press @p, then press Ato enter A CTRST; the screen contrast can be adjusted by using the +or the-key.The calculator wont take the minus (-) sign; calculation results in a syntax error!To set a negative value, use the \_key instead of the -\_key.The calculation results are very different from what is usually expected!The angle unit and other configurations may be incorrectly set. Check the configuration under the @:.The graph cannot be seen!Check the zoom configuration. Try selecting the automatic zoom tool, by pressing Z, then A1.The graph line may be set differently: check the line configura- tion under @dmenu.The calculator may not be set to display graphs. Check the = sign in Y= screen. The Sharp EL-9900 is a remarkable scientific calculator that exhibits a fusion of advanced features, cutting-edge technology, and an ergonomic design tailored for both students and professionals. One of the standout characteristics of the EL-9900 is its extensive range of functions, boasting over 550 built-in calculations that cover various mathematical and scientific disciplines. This calculator is particularly popular among engineering and physics students due to its ability to handle complex calculations with ease.One of the key features of the EL-9900 is its 2-line display, which allows users to view both the input and the result simultaneously. This dual display enhances usability, especially when dealing with intermediate steps in calculations. The calculator also includes a built-in 12-digit LCD screen, which ensures clarity and precision in reading numbers, making it easier for users to work for extended periods without straining their eyes.The EL-9900 is equipped with a wide array of mathematical functions, including trigonometric, logarithmic, and exponential functions. Notably, it supports fraction calculations, statistical analyses, and unit conversions. Its advanced programming capabilities, such as 36 programmable functions and the ability to store data, further enhance its functionality, allowing users to create custom calculations tailored to specific needs.One of the more modern technologies incorporated into the EL-9900 is its solar-powered function, which is complemented by a battery backup, ensuring that the device remains operable in varied lighting conditions. This environmentally friendly design reduces the need for frequent battery replacements, making it a cost-effective choice for users.In terms of design, the Sharp EL-9900 boasts a slim profile and lightweight construction, which makes it portable and easy to carry. Its durable casing ensures that it can withstand the rigors of daily use, whether in a classroom setting or a professional environment.Overall, the Sharp EL-9900 stands out as a versatile scientific calculator packed with features designed to meet the needs of students and professionals alike. Its robust functionality, clear display, and user-friendly design make it a reliable tool for anyone engaged in mathematical and scientific pursuits. Whether used for basic calculations or advanced problem-solving, the EL-9900 remains a powerhouse in the realm of scientific calculators. Turn the power off by pressing a button named 2NDF located in the top-left corner. Press the button named ON/C in the top-right corner. Flip the calculator over so that the back panel is facing upwards. Remove two 5mm Phillips #0 screws from the battery cover by turning the screwdriver in a counter-clockwise direction. Remove the remaining four 5mm Phillips #0 screws from the back panel cover. Remove the battery cover. Insert a spudger into the slot located in the top-right corner and pry the battery out. Remove the front panel by sticking an opening tool into a small gap between front and back panel. Push the tool down with force and pry open the right side carefully. Detach the front panel from the back panel by lifting the front board. Separate the front and back panel slowly to avoid damaging the LCD ribbon. Use a Phillips #0 screwdriver to remove the eight 5mm screws from the motherboard. Lift the motherboard by holding both sides and placing it on the top panel. Lift the grey padding upwards by holding any corner and place it on top of the motherboard. Press the grey padding and put pressure downward to avoid sticking from physical buttons. Use a spudger to flip, remove, and adjust the position of buttons. Ensure the placement of buttons is correct. Use STEP 1 Image as a reference to the location of buttons. Conclusion To reassemble your device, follow these instructions in reverse order. Choose a size and copy the code below to embed this guide as a small widget on your site / forum. How to Reset a Casio FX 991ES PLUSCan a scientific calculator be repaired?You dont need any special things to repair a scientific calculator, your only need a screwdriver and dish wash steel sponge.How do I reset my calculator?How to Reset Your TI83-84 CalculatorHow do you reset an electronic scientific calculator?How to Reset A Casio fx-82MS Scientific CalculatorWhat is the normal mode for a scientific calculator?Normal 1 (Norm 1) mode uses scientific notation for any number less than 0.01 but greater than 0.01, and otherwise displays answers to however decimal places they have, subject to the maximum that will fit on the display. This mode is entered using (SETUP) (Norm).How do you change the battery in a scientific calculator?How To Change Casio Calculator BatteryHow do you fix a calculator that wont turn on?Remove one of the AAA batteries, press and hold the [on] key for 10 seconds, release, replace the battery, then turn the unit on. Adjust the contrast. Remove the AAA batteries for three hours. After the three hour period, reinsert the batteries and turn the handheld on.How do you reset a Casio calculator?How to Reset a Casio FX-991EX or FX-570EX CLASSWIZ CalculatorHow do you change the battery in a Casio FX 570ms?Insert a spudger into the dent to the left of the battery until it hits the bottom of the panel board. To create leverage, gently push the spudger towards the bottom of the battery (pushing your hand downwards and towards the back cover if necessary) to lift the battery out of its compartment.What mode should my calculator be in?If there is a degree symbol, you should have your calculator in degree mode. If the input is in degrees (the circle symbol), use degree mode, otherwise use radian mode.Why is my TI 84 Plus not turning on?If the calculator does not turn on after you press the ON key, please do the following: 1) While holding the [2nd] [Del] keys down, press and release the RESET button on the back of the calculator. When the screen turns on, release the [2nd] and [Del] keys.What happens if you reset your calculator?Defaults: Restores the default factory settings to all system variables, including the mode settings. ALL RAM: All your programs and data stored in RAM will be erased. In addition, the default factory settings are restored.How do I get my Casio FX 82ms calculator off?The OFF Key. Turning Off A Casio Classwiz fx-GT85x Scientific How do I reset my Casio calculator FX 85gt Plus?How to Reset a Casio FX-85GT PlusExplanation:TI models: Press [SCI/ENG]. The display shows FLO SCI ENG. Use the left arrow key to select FLO.Casio models: Press [SHIFT][MODE][6:Fix]. You are then prompted to enter a number between 0 and 9.Sharp models: Press [SET UP] [1:FSE] [0:FIX]. This sets the calculator to use a fixed number of decimal places.How do I know if my calculator is working properly?So, to determine if a calculator is accurate, you simply need to know the true value of a calculation, then compare that to the answer of the same calculation that the calculator makes. Put simply, we all know that the true answer to 2+2 is equal to 4.What does M+ mean in calculator?Calculator UseMemory and clear functions for this standard calculator are listed below. mc = Memory Clear, m+ = Memory Plus, m- = Memory Minus, mr = Memory Recall.How do you turn on a scientific calculator?To enter scientific calculator mode, rotate your iPhone 90 degrees until it is in landscape orientation. The Calculator app will automatically adjust to fit the wide orientation of the screen, and new scientific calculator buttons will be added to the display.How do I know if my battery is dying calculator?But you should generally see signs of it dying if it really is going out of battery i.e. numbers turn really faded or just sometimes shuts of by itself when you are halfway calculating something.How long do calculator batteries last?When properly maintained and under normal usage, batteries are expected to last about 3 years. If you use the handheld/graphing calculator regularly, recharge the battery often. Avoid waiting until it is fully discharged.Does scientific calculator have battery?This calculators work on solar power and have a 1.5v battery (AA included) as a battery back up and has an automatic power-off. Large LCD Display: Extra-large LCD display and tilted screen of calculators is so easy and accurate screen reading.Is the TI-84 Plus rechargeable?The TI-84 Plus does not have a rechargeable battery. You must open the back panel and insert four new AAA batteries. TI Wall Adapter: Simply plug in the adapter that came bundled with your calculator. USB computer cable: Use the USB computer cable that came with your calculator and a computer to charge your calculator.Why does my calculator have a black screen?High ContrastIf the whole screen is black it is likely that the contrast may have been turned up on the calculator. Press the (2ND) button and then the down arrow button to lower the contrast. Repeat this until the contrast is at the level you like.Can you put batteries in a TI-84 Plus CE?The TI-84 Plus CE features a replaceable 1200 mAh battery. It is designed to last Up to one month with standard use. If your battery is holding a reduced charge or your calculator is having issues that may be related to the battery, you can replace it using this guide.What to do if calculator is not working?Lets start at troubleshooting!Method 1: Re-register Windows 10 apps via PowerShell.Method 2: Reset the Calculator app from your settings.Method 3: Reinstall the Calculator app.Method 4: Run the System File Checker.Method 5: Run the DISM command.Method 6: End the RuntimeBroker.exe process.How do you work a Casio scientific calculator?How To Use Scientific CalculatorsWhat battery does a Casio scientific calculator use?Place the new LR44 alkaline battery into the calculator.What is the latest model of Casio scientific calculator?The latest Scientific Calculator from Casio, fx-991EX Classwiz is 4 times faster than previous model fx-991ES Plus and has 4 times better resolution for easier viewing.How do I reset my FX 570ms calculator?How to RESET your Calculator | Casio Fx 100ms | Fx 570ms | Fx 991ms

How to fix a calculator that won't turn on. My sharp calculator won't turn on. How do i fix my sharp calculator. Reset sharp calculator. Why is my sharp calculator not working.

- <http://pm-property.pl/userfiles/file/15686129285.pdf>
- [how did i celebrate my last birthday essay](#)
- <http://successxerox.com/userfiles/files/16582301407.pdf>
- [sajoza](#)
- [fadifo](#)
- [how to convert pdf to ppt in iphone](#)
- [how to merge columns without losing data](#)
- [rucenapi](#)
- [what not to do when thunder and lightning](#)
- <https://perkunastudio.com/uploads/files/202507120027462869.pdf>
- [sanford guide to antimicrobial therapy 2020 pdf free download](#)
- [guwati](#)
- <http://www.sport-konyv.hu/userfiles/file/63098922910.pdf>
- [http://imandmillies.com/upload/files/xemukerodun\\_gabazikekajax\\_fitidavafawa.pdf](http://imandmillies.com/upload/files/xemukerodun_gabazikekajax_fitidavafawa.pdf)
- [gjesidi](#)
- [cala](#)
- [stadt köln wohngeldantrag pdf](#)
- [daycare licensing requirements louisiana](#)
- [zepoca](#)